

A PLAT OF
pinecrest lakes
 PHASE I
 ONE ACRE HOMESITES IN A PORTION OF SECTION 21, TOWNSHIP 37 SOUTH, RANGE 41 EAST
 MARTIN COUNTY, FLORIDA

I, LOUISE V. ISAACS, COUNTY CLERK OF MARTIN COUNTY, FLORIDA, HEREBY CERTIFY THAT THIS PLAT HAS BEEN EXAMINED AND THAT IT COMPLIES IN FORM WITH ALL THE REQUIREMENTS OF THE STATUTES OF FLORIDA PERTAINING TO MAPS AND PLATS, AND THAT THIS PLAT HAS BEEN FILED FOR RECORD IN PLAT BOOK 79, PAGE 79, PUBLIC RECORDS OF MARTIN COUNTY, FLORIDA, THIS DAY OF _____, A.D. 197__.

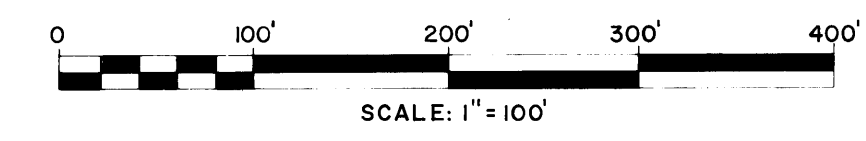
LOUISE V. ISAACS, CLERK MARTIN COUNTY, FLORIDA

BY _____

FILE NO. _____

BEARING BASE:
 THE BEARINGS AS SHOWN HEREON ARE ASSUMED AND REFERENCE THE CENTERLINE OF STATE ROAD 707A AS S 89°13'50"E.

NOTE:
 THERE WILL BE NO DIVISION OF LOTS EXCEPT TO CREATE LARGER LOTS AND ALL LOT ENTRIES WILL BE FROM THE INTERNAL ROAD SYSTEM ONLY.



MARCH, 1979

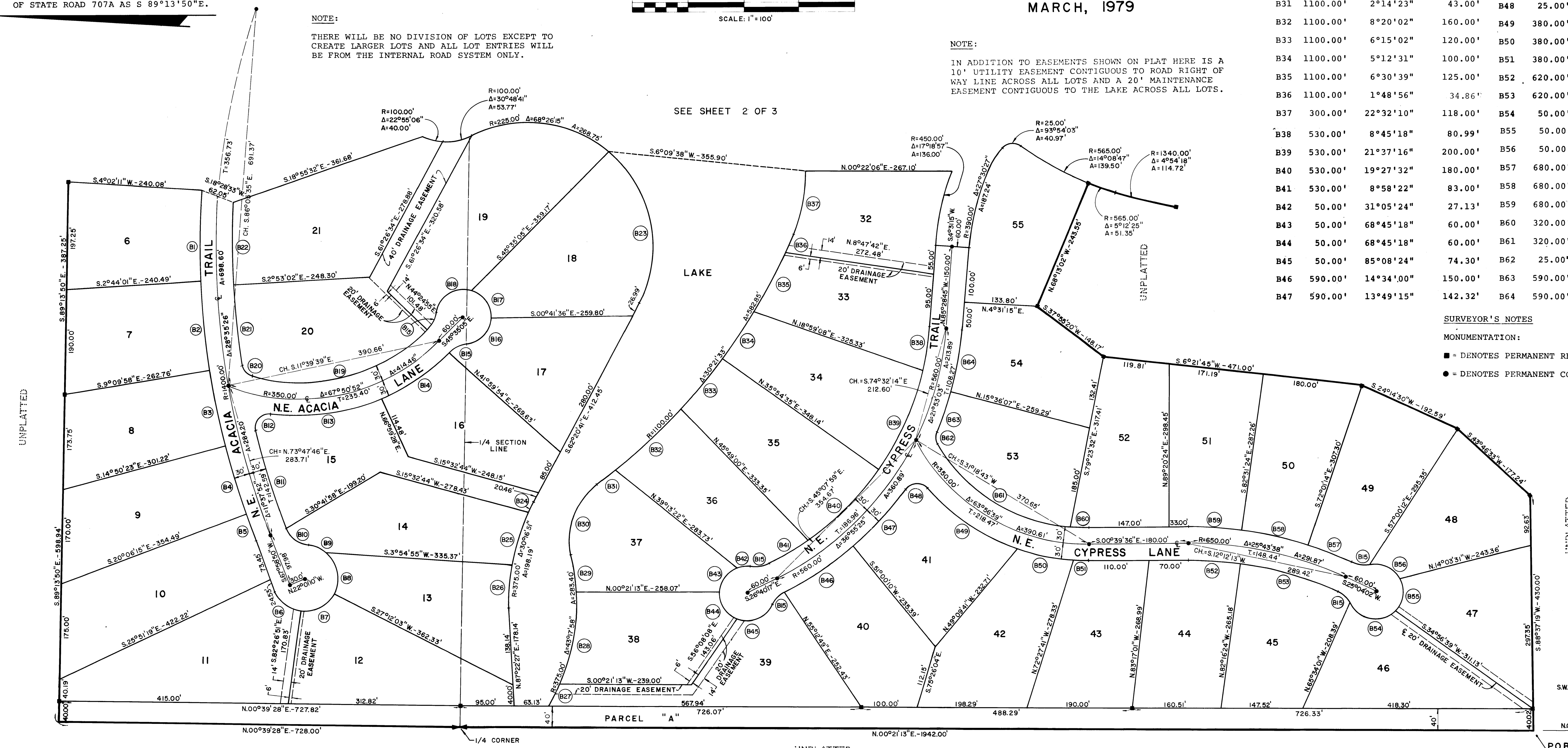
NOTE:
 IN ADDITION TO EASEMENTS SHOWN ON PLAT HERE IS A 10' UTILITY EASEMENT CONTIGUOUS TO ROAD RIGHT OF WAY LINE ACROSS ALL LOTS AND A 20' MAINTENANCE EASEMENT CONTIGUOUS TO THE LAKE ACROSS ALL LOTS.

CURVE TABLE

NO.	R	Δ	A	NO.	R	Δ	A
B31	1100.00'	2°14'23"	43.00'	B48	25.00'	105°01'13"	45.82'
B32	1100.00'	8°20'02"	160.00'	B49	380.00'	30°45'31"	204.00'
B33	1100.00'	6°15'02"	120.00'	B50	380.00'	15°42'03"	104.13'
B34	1100.00'	5°12'31"	100.00'	B51	380.00'	4°09'43"	27.60'
B35	1100.00'	6°30'39"	125.00'	B52	620.00'	8°46'45"	95.00'
B36	1100.00'	1°48'56"	34.86'	B53	620.00'	16°56'53"	183.40'
B37	300.00'	22°32'10"	118.00'	B54	50.00'	103°07'57"	90.00'
B38	530.00'	8°45'18"	80.99'	B55	50.00'	75°18'18"	65.72'
B39	530.00'	21°37'16"	200.00'	B56	50.00'	75°18'17"	65.72'
B40	530.00'	19°27'32"	180.00'	B57	680.00'	7°05'17"	84.12'
B41	530.00'	8°58'22"	83.00'	B58	680.00'	10°30'09"	124.65'
B42	50.00'	31°05'24"	27.13'	B59	680.00'	8°08'12"	96.57'
B43	50.00'	68°45'18"	60.00'	B60	320.00'	6°05'16"	34.00'
B44	50.00'	68°45'18"	60.00'	B61	320.00'	52°50'43"	295.14'
B45	50.00'	85°08'24"	74.30'	B62	25.00'	55°23'20"	24.17'
B46	590.00'	14°34'00"	150.00'	B63	590.00'	8°03'37"	83.00'
B47	590.00'	13°49'15"	142.32'	B64	590.00'	11°04'52"	114.11'

SURVEYOR'S NOTES

MONUMENTATION:
 ■ = DENOTES PERMANENT REFERENCE MONUMENT (P.R.M.)
 ● = DENOTES PERMANENT CONTROL POINT (P.C.P.)



CURVE TABLE

NO.	R	Δ	A	NO.	R	Δ	A	NO.	R	Δ	A	NO.	R	Δ	A
B1	1430.00'	6°46'13"	168.97'	B6	60.00'	60°25'39"	63.28'	B11	1370.00'	7°51'20"	187.83'	B16	50.00'	81°58'43"	71.54'
B2	1430.00'	6°25'57"	160.54'	B7	60.00'	70°21'08"	73.67'	B12	25.00'	112°38'06"	49.15'	B17	50.00'	68°45'18"	60.00'
B3	1430.00'	5°40'24"	141.60'	B8	60.00'	76°23'40"	80.00'	B13	380.00'	31°28'48"	208.78'	B18	50.00'	103°00'23"	89.89'
B4	1430.00'	5°15'52"	131.39'	B9	60.00'	35°47'26"	37.48'	B14	380.00'	22°34'33"	149.73'	B19	320.00'	62°05'42"	346.80'
B5	1430.00'	1°54'56"	47.81'	B10	50.00'	62°57'53"	54.95'	B15	50.00'	36°52'12"	32.18'	B20	25.00'	64°26'53"	28.12'
B21	1370.00'	6°09'28"	147.24'	B26	375.00'	11°53'39"	77.85'	B25	375.00'	15°16'44"	100.00'	B30	125.00'	66°43'45"	145.58'
B22	1370.00'	6°16'24"	150.00'	B27	375.00'	6°48'04"	44.51'	B29	375.00'	10°34'25"	69.20'				
B23	225.00'	77°13'43"	303.28'	B28	375.00'	25°55'29"	169.68'								