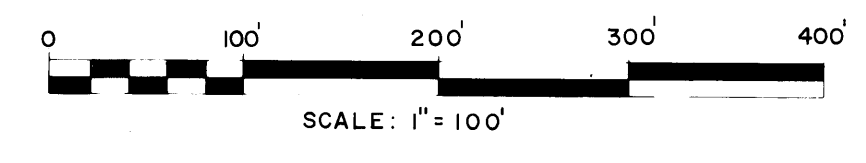


A PLAT OF
pinecrest lakes
 PHASE I
 ONE ACRE HOMESITES IN A PORTION OF SECTION 21, TOWNSHIP 37 SOUTH, RANGE 41 EAST
 MARTIN COUNTY, FLORIDA

I, LOUISE V. ISAACS, COUNTY CLERK OF MARTIN COUNTY, FLORIDA, HEREBY CERTIFY THAT THIS PLAT HAS BEEN EXAMINED AND THAT IT COMPLIES IN FORM WITH ALL THE REQUIREMENTS OF THE STATUTES OF FLORIDA PERTAINING TO MAPS AND PLATS, AND THAT THIS PLAT HAS BEEN FILED FOR RECORD IN PLAT BOOK 79, PAGE 79, PUBLIC RECORDS OF MARTIN COUNTY, FLORIDA, THIS DAY OF , A.D. 1979.

LOUISE V. ISAACS, CLERK MARTIN COUNTY, FLORIDA
 BY _____
 FILE NO. _____

BEARING BASE:
 THE BEARINGS AS SHOWN HERON ARE ASSUMED AND REFERENCE THE CENTERLINE OF STATE ROAD 707A AS S 89°13'50"E.



MARCH, 1979

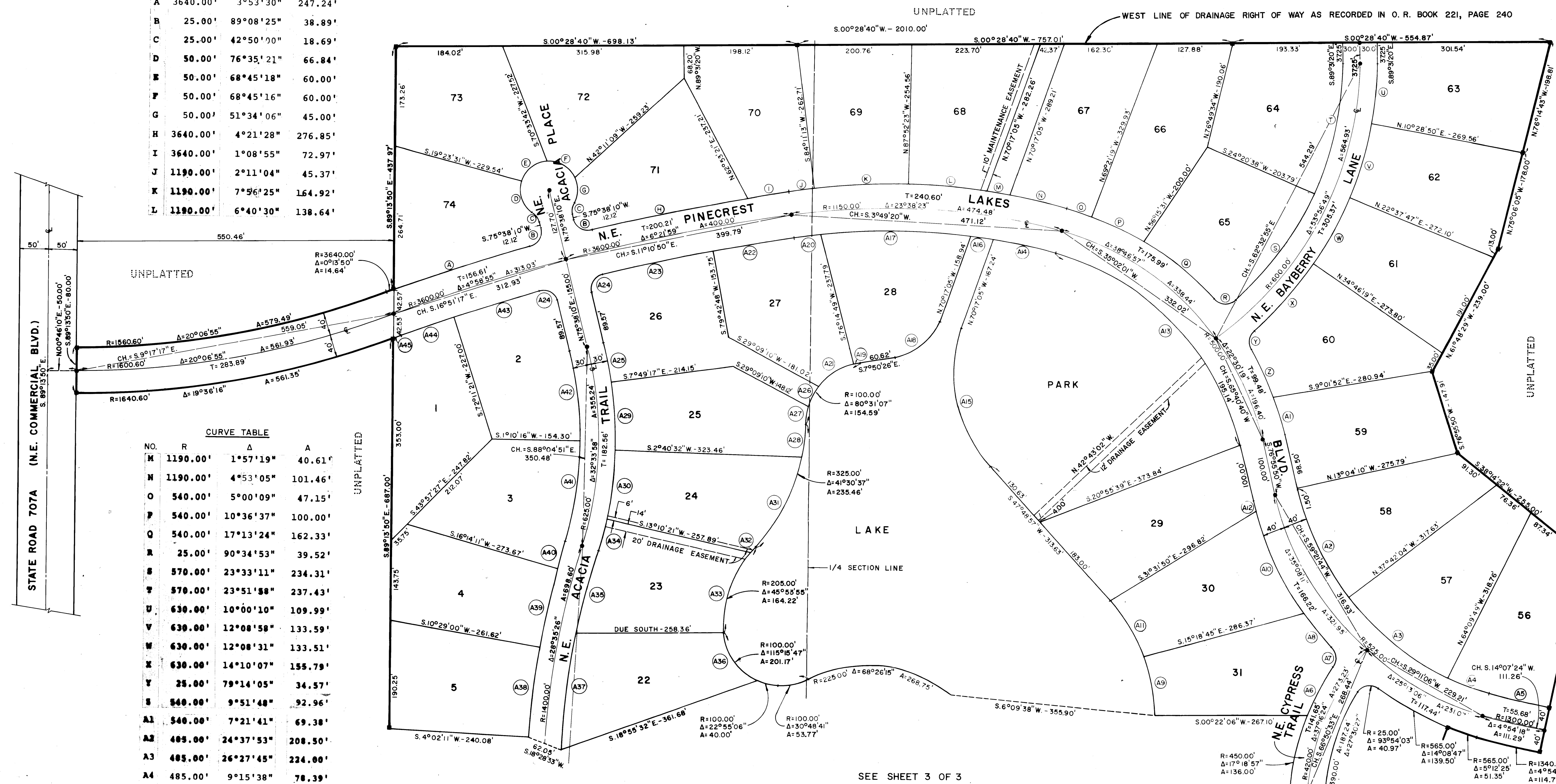
NOTE:
 THERE WILL BE NO DIVISION OF LOTS EXCEPT TO CREATE LARGER LOTS AND ALL LOT ENTRIES WILL BE FROM THE INTERNAL ROAD SYSTEM ONLY.

NO.	R	Δ	A
A	3640.00'	3°53'30"	247.24'
B	25.00'	89°08'25"	38.89'
C	25.00'	42°50'00"	18.69'
D	50.00'	76°35'21"	66.84'
E	50.00'	68°45'18"	60.00'
F	50.00'	68°45'16"	60.00'
G	50.00'	51°34'06"	45.00'
H	3640.00'	4°21'28"	276.85'
I	1190.00'	1°08'55"	72.97'
J	1190.00'	2°11'04"	45.37'
K	1190.00'	7°56'25"	164.92'
L	1190.00'	6°40'30"	138.64'

NO.	R	Δ	A
M	1190.00'	1°57'19"	40.61'
N	1190.00'	4°53'05"	101.46'
O	540.00'	5°00'09"	47.15'
P	540.00'	10°36'37"	100.00'
Q	540.00'	17°13'24"	162.33'
R	25.00'	90°34'53"	39.52'
S	570.00'	23°33'11"	234.31'
T	570.00'	23°51'58"	237.43'
U	630.00'	10°00'10"	109.99'
V	630.00'	12°08'31"	133.51'
W	630.00'	14°10'07"	155.79'
X	25.00'	79°14'05"	34.57'
Y	540.00'	9°51'48"	92.96'
Z	540.00'	7°21'41"	69.38'
AA	485.00'	24°37'53"	208.50'
AB	485.00'	26°27'45"	224.00'
AC	485.00'	9°15'38"	78.39'
AD	1260.00'	4°54'18"	107.87'
AE	450.00'	12°21'33"	97.07'
AF	25.00'	77°27'34"	33.80'

NO.	R	Δ	A
A8	565.00'	8°18'56"	82.00'
A9	300.00'	20°03'13"	105.00'
A10	565.00'	20°09'16"	198.75'
A11	300.00'	22°22'30"	117.15'
A12	565.00'	1°43'26"	17.00'
A13	460.00'	61°17'18"	492.05'
A14	1110.00'	5°32'11"	107.26'
A15	240.00'	61°53'59"	259.29'
A16	1110.00'	2°06'04"	40.71'
A17	1110.00'	13°33'01"	262.51'
A18	100.00'	62°26'39"	108.99'
A19	110.00'	5°54'44"	11.35'
A20	1110.00'	2°27'07"	47.50'
A21	110.00'	36°37'08"	70.30'
A22	3560.00'	2°17'21"	142.24'
A23	3560.00'	3°11'08"	197.93'
A24	25.00'	90°53'30"	39.66'
A25	655.00'	6°32'33"	74.79'
A26	110.00'	20°57'05"	40.22'
A27	110.00'	17°02'10"	32.72'
A28	325.00'	10°37'19"	60.25'
A29	655.00'	10°29'49"	120.00'
A30	655.00'	10°29'49"	120.00'
A31	325.00'	30°53'18"	175.21'
A32	205.00'	3°23'51"	12.16'
A33	205.00'	42°29'59"	152.06'
A34	655.00'	5°01'47"	57.50'
A35	1370.00'	6°15'18"	149.56'
A36	100.00'	61°32'00"	107.40'

NO.	R	Δ	A
A37	1370.00'	8°33'28"	204.63'
A38	1430.00'	6°26'49"	160.90'
A39	1430.00'	5°45'10"	143.58'
A40	1430.00'	1°57'57"	49.07'
A41	595.00'	17°01'52"	176.86'
A42	595.00'	15°32'05"	161.32'
A43	3860.00'	2°33'20"	158.79'
A44	3860.00'	1°32'06"	95.37'
A45	1640.60'	0°30'39"	14.63'



NOTE:
 IN ADDITION TO EASEMENTS SHOWN ON PLAT HERE IS A 10' UTILITY EASEMENT CONTIGUOUS TO ROAD RIGHT OF WAY LINE ACROSS ALL LOTS AND A 20' MAINTENANCE EASEMENT CONTIGUOUS TO THE LAKE ACROSS ALL LOTS.

SURVEYOR'S NOTES
MONUMENTATION:
 ■ = DENOTES PERMANENT REFERENCE MONUMENT (P.R.M.)
 ● = DENOTES PERMANENT CONTROL POINT (P.C.P.)

SEE SHEET 3 OF 3