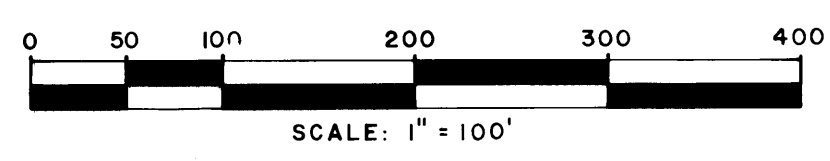


PLAT OF CRANE CREEK COUNTRY CLUB PHASE IV - BLOCK B IN SECTIONS 10 & 11, TOWNSHIP 38 SOUTH, RANGE 40 EAST MARTIN COUNTY, FLORIDA



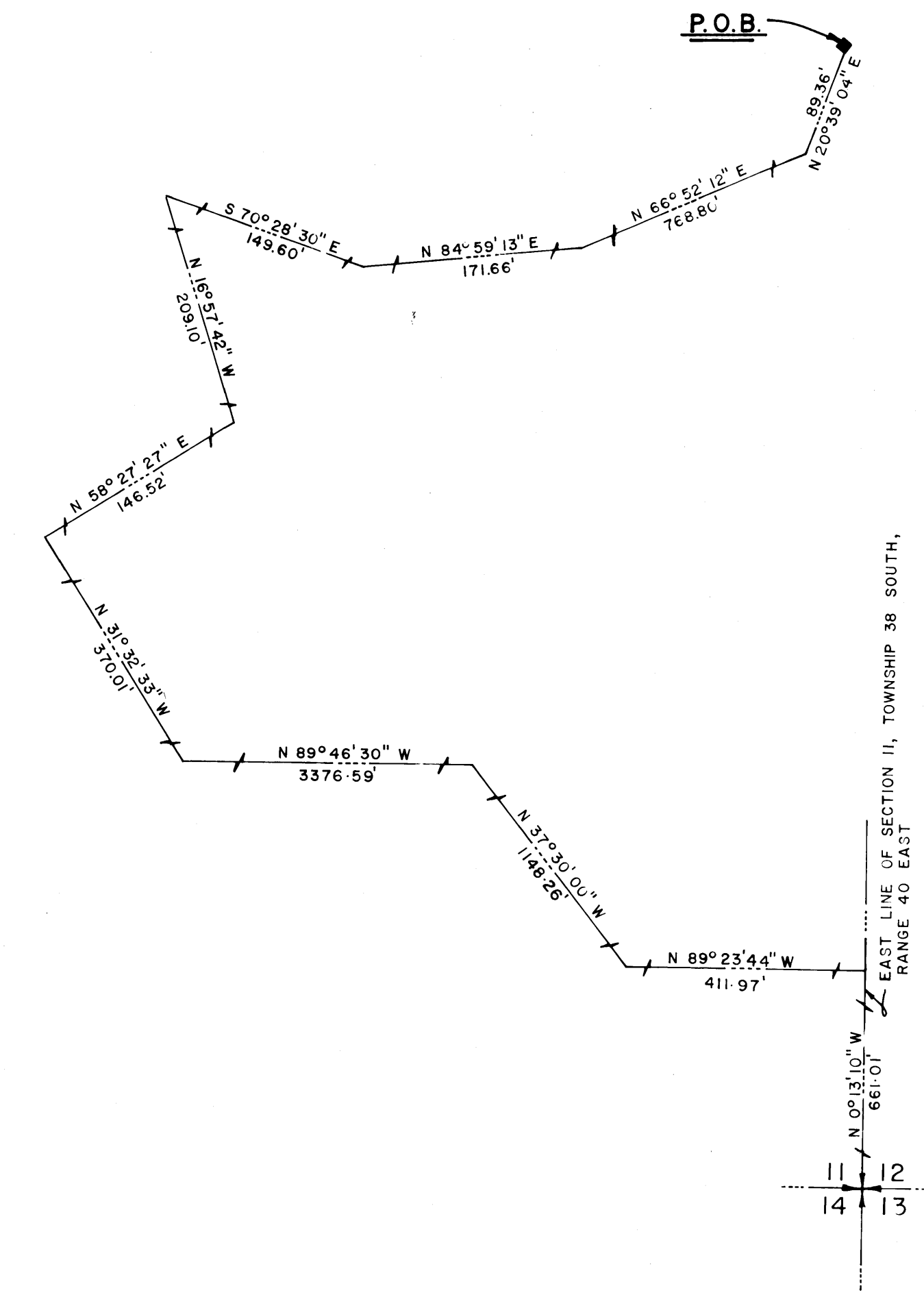
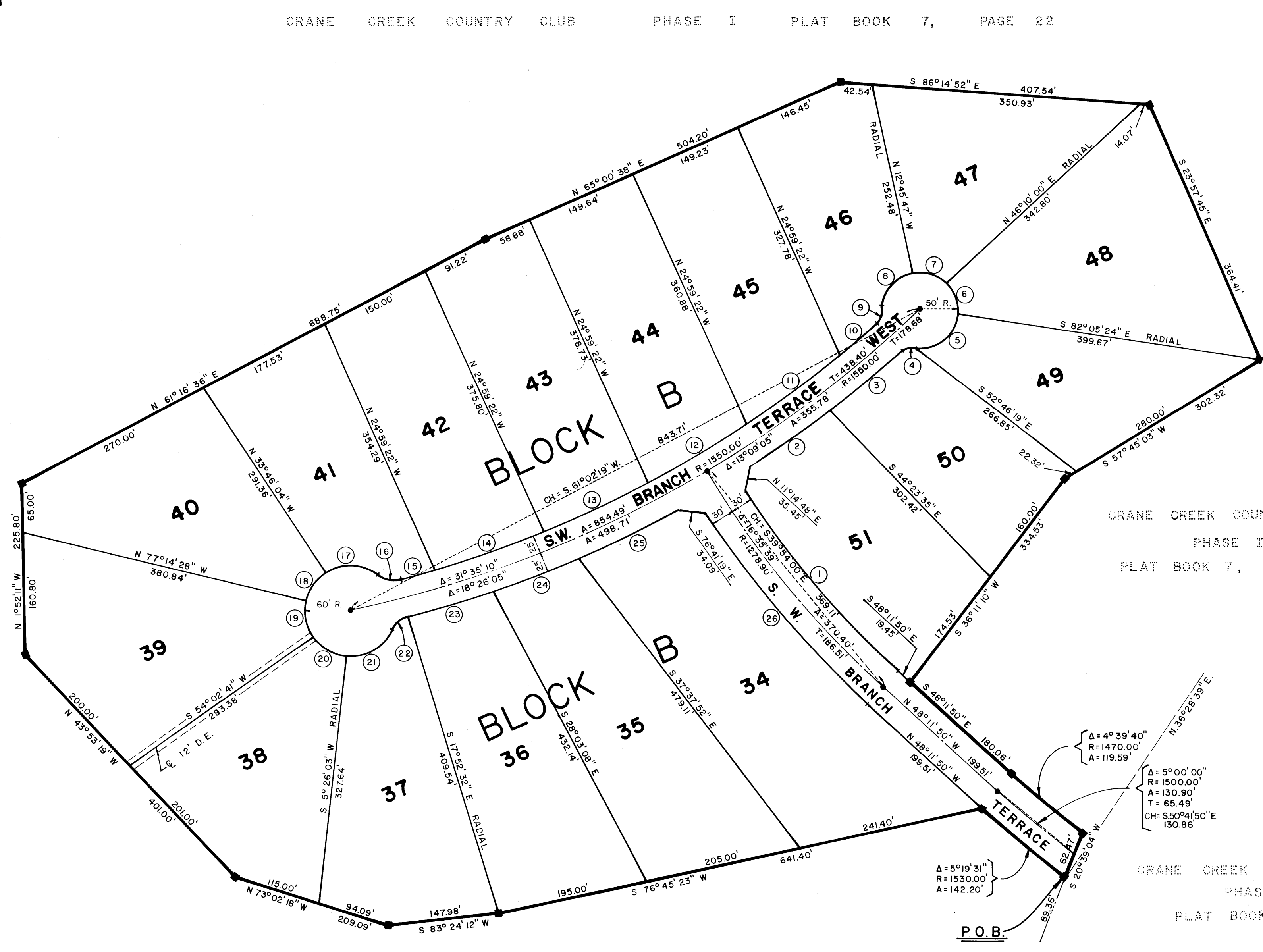
CURVE TABLE		
RADIUS	DELTA	ARC
1. 1248.90'	14°17'56"	311.68'
2. 1575.00'	04°38'16"	127.49'
3. 1575.00'	04°28'28"	123.00'
4. 25.00'	47°10'51"	20.59'
5. 50.00'	86°33'01"	75.53'
6. 50.00'	51°44'36"	45.16'
7. 50.00'	58°55'47"	51.43'
8. 50.00'	79°08'21"	69.06'
9. 25.00'	49°14'55"	21.49'
10. 1525.00'	02°17'03"	60.80'
11. 1525.00'	05°44'43"	152.92'
12. 1525.00'	05°39'51"	150.76'
13. 1525.00'	05°38'08"	150.00'
14. 1525.00'	05°38'36"	150.20'
15. 1525.00'	01°49'52"	48.74'
16. 30.00'	53°40'59"	28.11'
17. 60.00'	71°36'03"	74.98'
18. 60.00'	43°28'22"	45.53'
19. 60.00'	48°42'54"	51.01'
20. 60.00'	48°36'37"	50.91'
21. 60.00'	72°14'17"	75.65'
22. 30.00'	51°02'51"	26.73'
23. 1575.00'	04°17'39"	118.04'
24. 1575.00'	04°19'59"	119.11'
25. 1575.00'	05°16'55"	145.20'
26. 1308.90'	14°29'08"	330.91'

I, LOUISE V. ISAACS, COUNTY CLERK OF MARTIN COUNTY, FLORIDA, HEREBY CERTIFY THAT THIS PLAT HAS BEEN EXAMINED AND THAT IT COMPLIES IN FORM WITH ALL THE REQUIREMENTS OF THE STATUTES OF FLORIDA PERTAINING TO MAPS AND PLATS, AND THAT THIS PLAT HAS BEEN FILED FOR RECORD IN PLAT BOOK 7, PAGE 75, PUBLIC RECORDS OF MARTIN COUNTY, FLORIDA, THIS DAY OF _____, A.D. 197__.

LOUISE V. ISAACS, CLERK
MARTIN COUNTY, FLORIDA

BY _____

FILE NO. _____



SURVEYOR'S NOTES

MONUMENTATION:

- = DENOTES PERMANENT REFERENCE MONUMENT (P.R.M.)
- = DENOTES PERMANENT CONTROL POINT (P.C.P.)
- U.E. = DENOTES UTILITY EASEMENT
- D.E. = DENOTES DRAINAGE EASEMENT

NOTE:

IN ADDITION TO EASEMENTS SHOWN ON PLAT THERE IS A 10' UTILITY EASEMENT CONTIGUOUS TO ROAD RIGHT OF WAY LINE ACROSS ALL LOTS

LINDAHL, BROWNING & FERRARI, INC.
Consulting Engineers, Planners & Surveyors
426 INDIANTOWN ROAD 951 COLORADO AVENUE
JUPITER, FLORIDA 33458 STUART, FLORIDA 34994