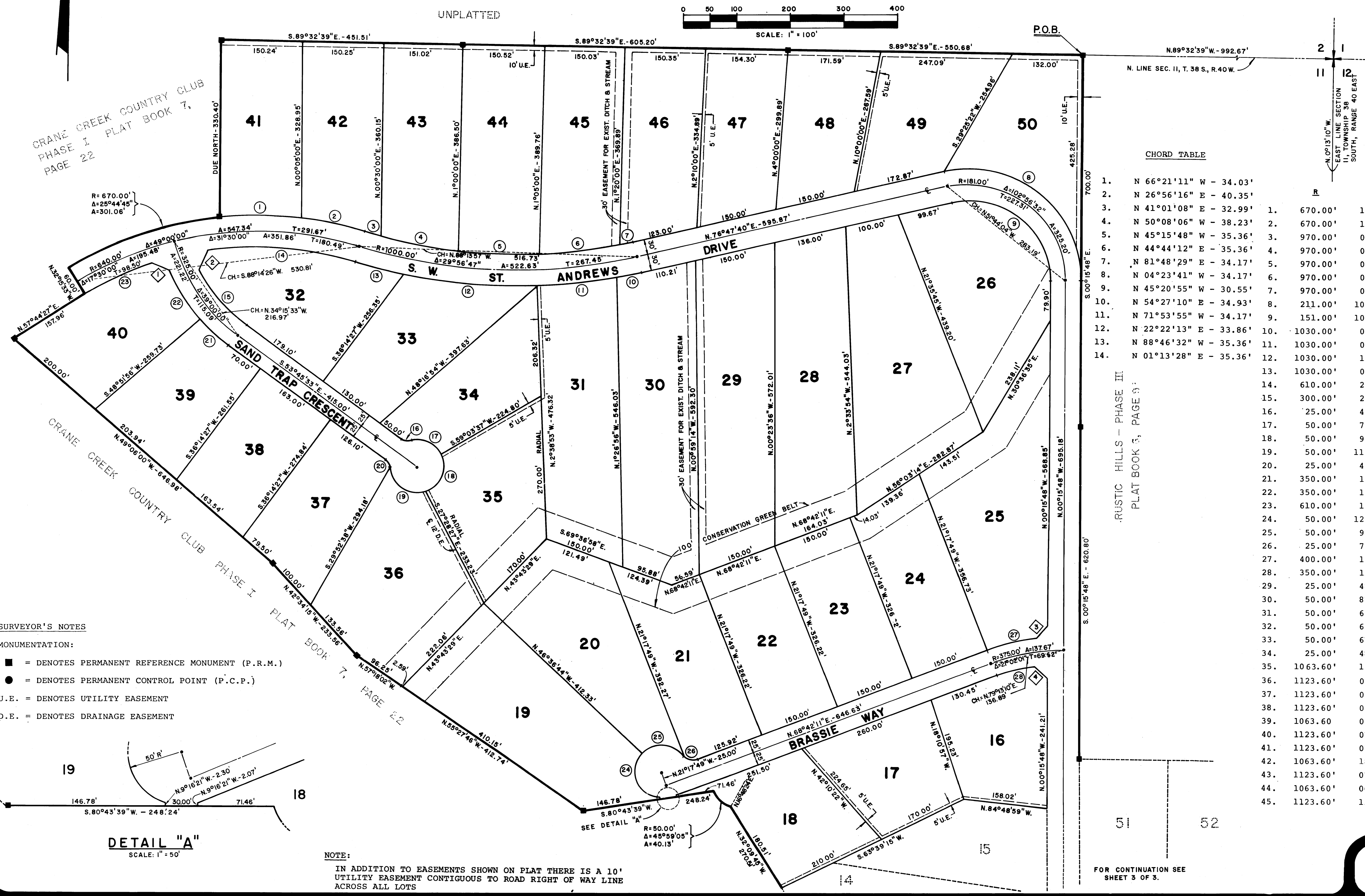


PLAT OF CRANE CREEK COUNTRY CLUB

PHASE III IN SECTIONS 11 & 12, TOWNSHIP 38 SOUTH, RANGE 40 EAST MARTIN COUNTY, FLORIDA

I, LOUISE V. ISAACS, COUNTY CLERK OF MARTIN COUNTY, FLORIDA, HEREBY CERTIFY THAT THIS PLAT HAS BEEN EXAMINED AND THAT IT COMPLIES IN FORM WITH ALL THE REQUIREMENTS OF THE STATUTES OF FLORIDA PERTAINING TO MAPS AND PLATS, AND THAT THIS PLAT HAS BEEN FILED FOR RECORD IN PLAT BOOK 7, PAGE 74, PUBLIC RECORDS OF MARTIN COUNTY, FLORIDA, THIS DAY OF _____, A.D. 197__.

LOUISE V. ISAACS, CLERK
MARTIN COUNTY, FLORIDA
BY _____
FILE NO. _____



CRANE CREEK COUNTRY CLUB
PHASE I PLAT BOOK 7,
PAGE 22

CRANE CREEK COUNTRY CLUB
PHASE I PLAT BOOK 7,
PAGE 22

CHORD TABLE

CHORD TABLE	CHORD TABLE FOR SHEETS 2 AND 3 OF 3
1.	1.
N 66°21'11" W - 34.03'	R 670.00' 12°50'00" 150.07' 46. 1123.60' 05°21'50" 105.19'
N 26°56'16" E - 40.35'	2. 670.00' 10°25'15" 121.86' 47. 670.00' 09°03'19" 105.89'
N 41°01'08" E - 32.99'	3. 970.00' 01°44'27" 29.47' 48. 1063.60' 15°06'31" 280.47'
N 50°08'06" W - 38.23'	4. 970.00' 08°52'00" 150.11' 49. 730.00' 06°54'34" 88.03'
N 45°15'48" W - 35.36'	5. 970.00' 08°52'00" 150.11' 50. 250.00' 44°38'07" 194.76'
N 44°44'12" E - 35.36'	6. 970.00' 08°52'00" 150.11' 51. 250.00' 31°21'53" 136.85'
N 81°48'29" E - 34.17'	7. 970.00' 01°36'20" 27.18' 52. 225.00' 16°05'45" 63.21'
N 04°23'41" W - 34.17'	8. 211.00' 102°56'32" 379.10' 53. 225.00' 24°27'51" 96.07'
N 45°20'55" W - 30.55'	9. 151.00' 102°56'32" 271.30' 54. 225.00' 22°22'19" 87.85'
N 54°27'10" E - 34.93'	10. 1030.00' 02°12'49" 39.79' 55. 25.00' 41°24'35" 18.07'
N 71°53'55" W - 34.17'	11. 1030.00' 08°20'38" 150.00' 56. 50.00' 98°17'57" 85.78'
N 22°22'13" E - 33.86'	12. 1030.00' 13°59'13" 251.44' 57. 50.00' 61°28'19" 53.64'
N 88°46'32" W - 35.36'	13. 1030.00' 05°24'07" 97.11' 58. 50.00' 115°34'16" 100.86'
N 01°13'28" E - 35.36'	14. 610.00' 25°59'42" 276.76' 59. 25.00' 58°08'40" 25.37'
	15. 300.00' 26°53'19" 140.79' 60. 175.00' 58°43'12" 179.35'
	16. 25.00' 48°11'23" 21.03' 61. 300.00' 09°30'06" 49.75'
	17. 50.00' 71°00'32" 61.97' 62. 300.00' 20°06'13" 105.26'
	18. 50.00' 93°27'56" 81.56' 63. 400.00' 08°50'02" 61.67'
	19. 50.00' 111°54'17" 97.66' 64. 400.00' 07°28'09" 52.14'
	20. 25.00' 48°11'23" 21.03' 65. 25.00' 48°11'23" 21.03'
	21. 350.00' 12°37'29" 77.12' 66. 50.00' 90°35'43" 79.06'
	22. 350.00' 17°39'56" 107.91' 67. 50.00' 89°02'09" 77.70'
	23. 610.00' 13°01'19" 138.64' 68. 50.00' 96°44'54" 84.43'
	24. 50.00' 125°12'10" 109.26' 69. 25.00' 48°11'23" 21.03'
	25. 50.00' 95°50'38" 83.64' 70. 350.00' 14°31'07" 88.69'
	26. 25.00' 70°31'44" 30.77' 71. 300.00' 28°34'33" 149.62'
	27. 400.00' 13°35'53" 94.93' 72. 730.00' 09°20'58" 119.12'
	28. 350.00' 11°17'26" 68.97' 73. 670.00' 18°08'17" 212.10'
	29. 25.00' 48°11'23" 21.03' 74. 670.00' 09°48'24" 114.68'
	30. 50.00' 87°42'21" 76.54' 75. 730.00' 09°20'58" 119.12'
	31. 50.00' 60°44'50" 53.01' 76. 25.00' 48°11'23" 21.03'
	32. 50.00' 60°00'00" 52.36' 77. 50.00' 47°55'28" 41.82'
	33. 50.00' 67°55'35" 59.28' 78. 50.00' 74°16'35" 64.82'
	34. 25.00' 48°11'23" 21.03' 79. 50.00' 74°16'38" 64.82'
	35. 1063.60' 13°18'55" 247.18' 80. 50.00' 79°54'05" 69.73'
	36. 1123.60' 05°25'18" 106.32' 81. 25.00' 48°11'23" 21.03'
	37. 1123.60' 07°00'00" 137.27' 82. 580.00' 17°56'25" 181.61'
	38. 1123.60' 07°00'00" 137.27' 83. 520.00' 13°05'44" 118.85'
	39. 1063.60' 08°10'17" 151.69' 84. 520.00' 25°04'09" 227.52'
	40. 1123.60' 07°00'00" 137.27' 85. 580.00' 09°10'00" 92.79'
	41. 1123.60' 07°00'00" 137.27' 86. 580.00' 08°53'30" 90.01'
	42. 1063.60' 18°50'14" 349.68' 87. 580.00' 09°40'00" 97.86'
	43. 1123.60' 07°28'34" 146.61' 88. 580.00' 10°05'00" 102.07'
	44. 1063.60' 06°18'15" 117.03' 89. 520.00' 26°47'17" 239.64'
	45. 1123.60' 15°28'30" 303.47' 90. 520.00' 06°39'19" 60.40'
	91. 580.00' 10°10'00" 102.92'
	92. 580.00' 00°34'07" 5.76'

SURVEYOR'S NOTES

MONUMENTATION:

- = DENOTES PERMANENT REFERENCE MONUMENT (P.R.M.)
- = DENOTES PERMANENT CONTROL POINT (P.C.P.)
- U.E. = DENOTES UTILITY EASEMENT
- D.E. = DENOTES DRAINAGE EASEMENT

DETAIL "A"
SCALE: 1" = 50'

NOTE:
IN ADDITION TO EASEMENTS SHOWN ON PLAT THERE IS A 10' UTILITY EASEMENT CONTIGUOUS TO ROAD RIGHT OF WAY LINE ACROSS ALL LOTS

FOR CONTINUATION SEE SHEET 3 OF 3.

LINDAHL, BROWNING & FERRARI, INC.
Consulting Engineers, Planners & Surveyors
425 INDIANTOWN ROAD JUPITER, FLORIDA 33458 951 COLORADO AVENUE STUART, FLORIDA 33494