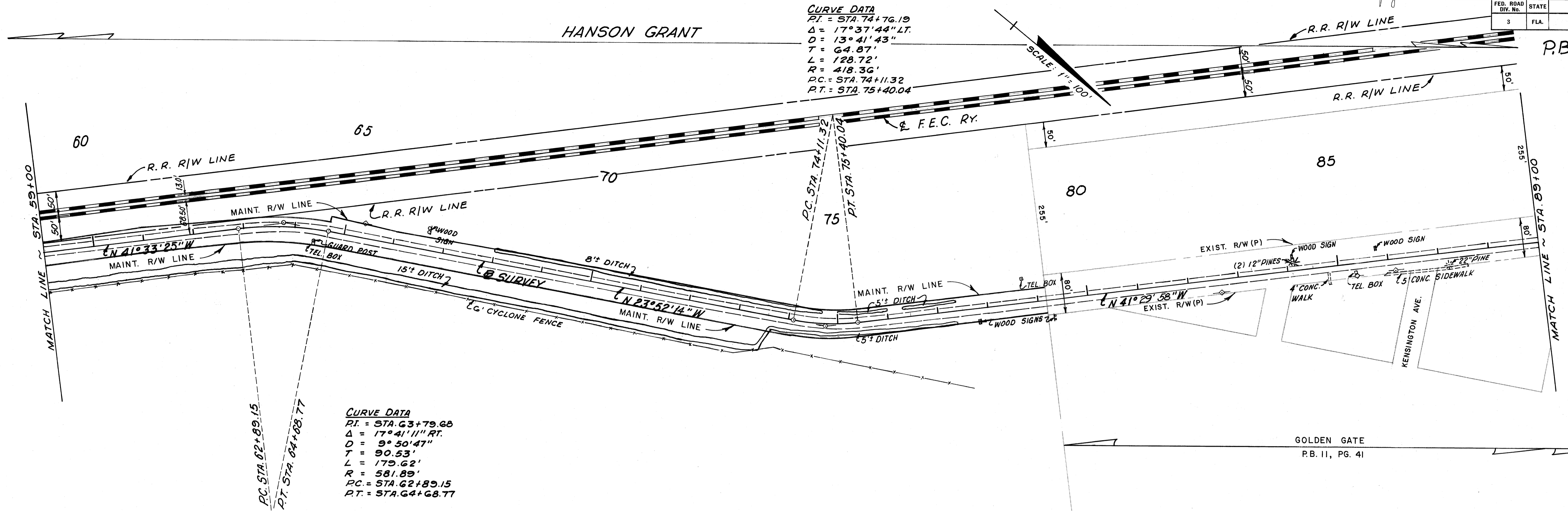


FED. ROAD DIV. No.	STATE	PROJECT No.	FISCAL YEAR	SHEET No.
3	FLA.			

P.B. 7 pg. 71

HANSON GRANT

CURVE DATA  
 P.I. = STA. 74+76.19  
 Δ = 17° 37' 44" LT.  
 D = 13° 41' 43"  
 T = 64.87'  
 L = 128.72'  
 R = 418.36'  
 P.C. = STA. 74+11.32  
 P.T. = STA. 75+40.04



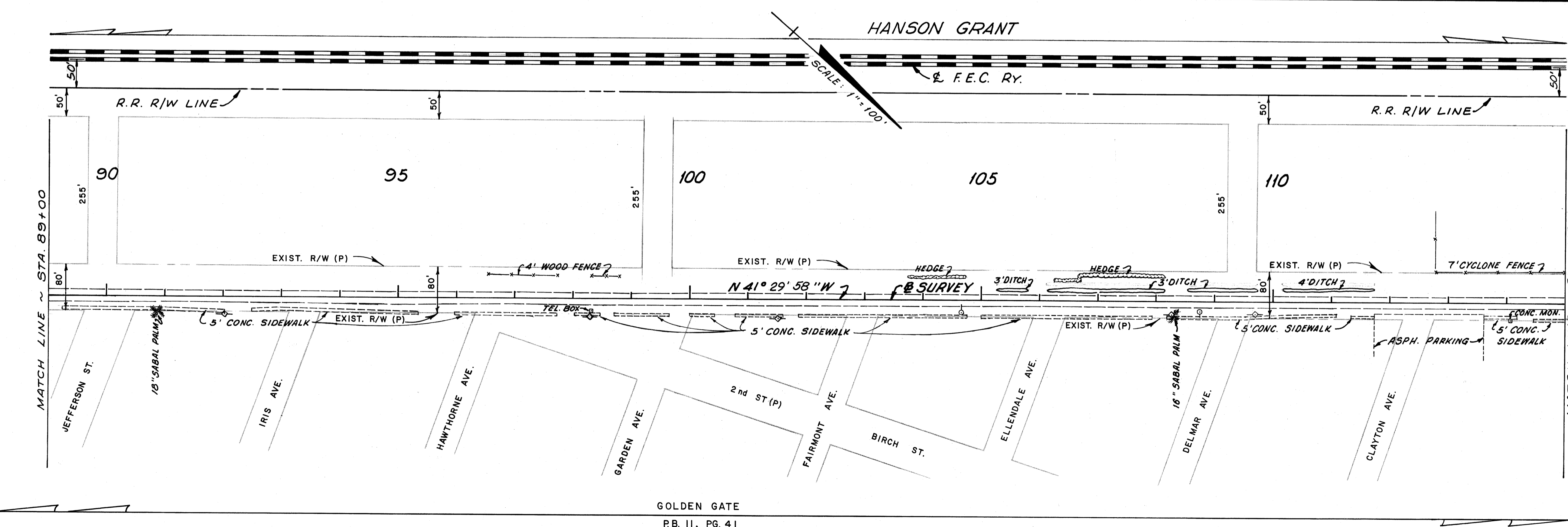
CURVE DATA  
 P.I. = STA. 63+79.68  
 Δ = 17° 41' 11" RT.  
 D = 9° 50' 47"  
 T = 90.53'  
 L = 179.62'  
 R = 581.89'  
 P.C. = STA. 62+89.15  
 P.T. = STA. 64+68.77

GOLDEN GATE  
 P.B. 11, PG. 41

HANSON GRANT

MAINT. R/W DATA

STA.	LEFT	RIGHT
61+00	24'	24'
62+89.15	20'	28'
64+00	20'	31'
64+68.77	20' BK.	31'
	30' AHD.	
65+00	30'	30'
66+00	25'	30'
67+00	27'	30'
69+00	30'	31'
72+00	30'	30'
73+60		32'
74+11.32	30'	29'
75+00	28'	27'
76+00		27'
77+45		27'
78+00	25'	
78+50		27'
79+00		24'



GOLDEN GATE  
 P.B. 11, PG. 41

STATE OF FLORIDA  
 DEPARTMENT OF TRANSPORTATION  
**MAINTENANCE MAP**  
 STATE ROAD No. A-1-A MARTIN COUNTY

BY	DATE	APPROVED	DATE
GREGORY	JUNE 78	<i>William J. Smith</i>	6/20/78
TRACED	STOUT	10-13-78	
CHECKED			
COMPARED			
INDEXED			

SECTION. 89030 SHEET 11 OF 14

REVISION	BY	DATE