

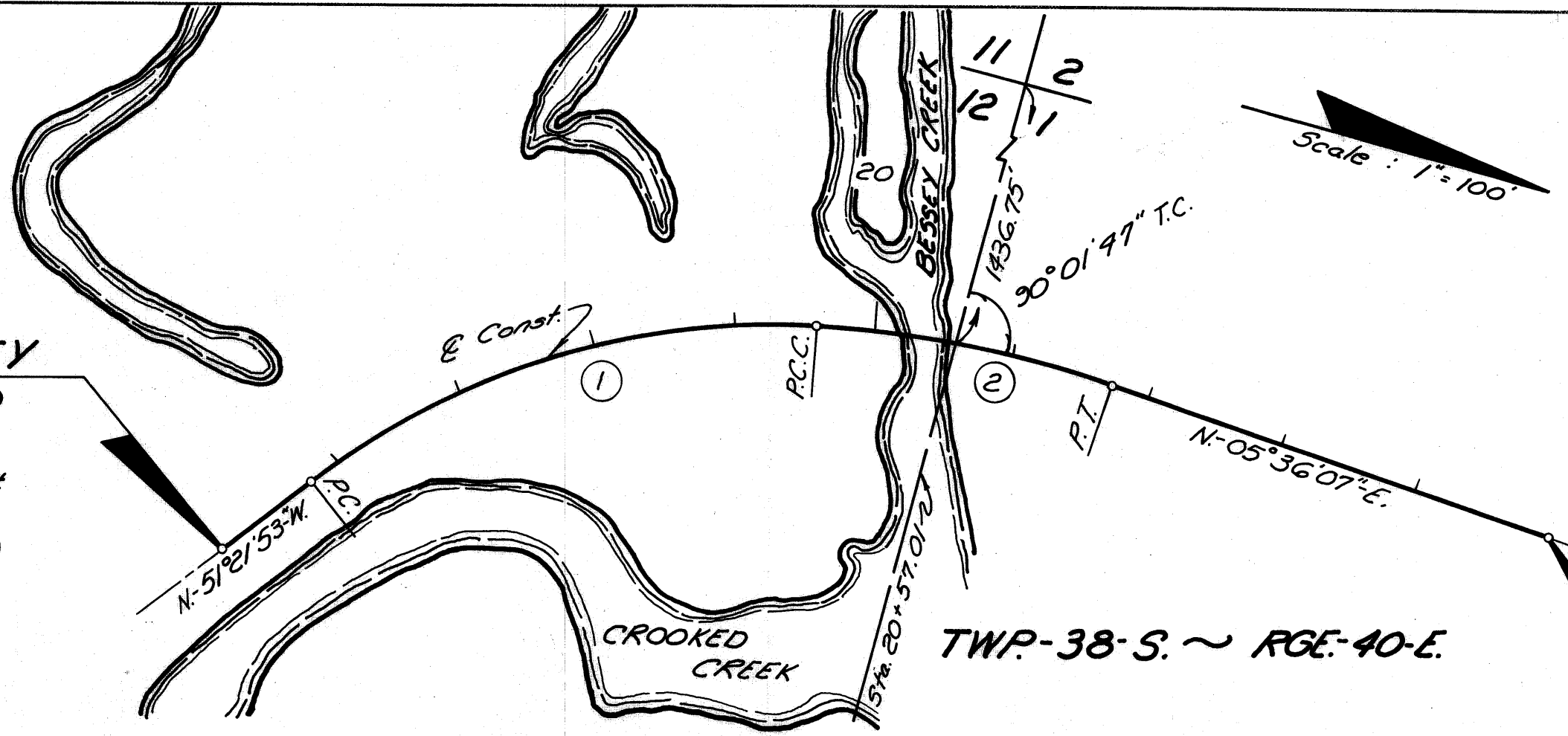
FILED FOR RECORD
MARTIN COUNTY, FLA.

79 FEB 7 P1:20

LOUISE V. ISAACS
CLERK OF CIRCUIT COURT
BY _____ D.C.

BEGIN SURVEY
Sta. 15+00.00

P.I. Sta. 17+77.06
 $\Delta = 41^{\circ}25'39''$ Rt.
D. = 10'54'57"
T. = 198.48' ①
L. = 379.52'
R. = 524.89'
P.C. Sta. 15+78.58
P.T. Sta. 19+58.10



P.I. Sta. 20+65.93
 $\Delta = 15^{\circ}32'21''$ Rt.
D. = 7'15'00"
T. = 107.83' ②
L. = 214.34'
R. = 790.29'
P.C. Sta. 19+58.10
P.T. Sta. 21+72.44

END SURVEY
Sta. 24+98.52

I, Billy G. Pelham, as Director of Administration of the State of Florida Department of Transportation, do hereby certify that this map is the Official Map of Location and Survey of a portion of Section 89000 in Martin County, Florida: Said portion of Section 89000 including Bessey Creek Bridge Number 890100 and approaches in Section 12 and 1, Township 38 South, Range 40 East.

Prepared and adopted by the State of Florida Department of Transportation under provisions of Section 335.02, Florida Statutes of 1955.

Billy G. Pelham
Director of Administration
State of Florida Department of Transportation

Attest: Carolyn Scuderi
Executive Secretary

Approved: R. E. Michael
Engineer of Rights of Way
Date: 11/15/78

Filed for record in the Office of the Clerk of the Circuit Court for the County of Martin, State of Florida, in PIAT Book 7, Page 70, on the 7th day of February, A.D. 1979.

File No: 331032

Louise V. Isaacs
Clerk of the Circuit Court
Martin County, Florida
By Charlotte Burkley DC