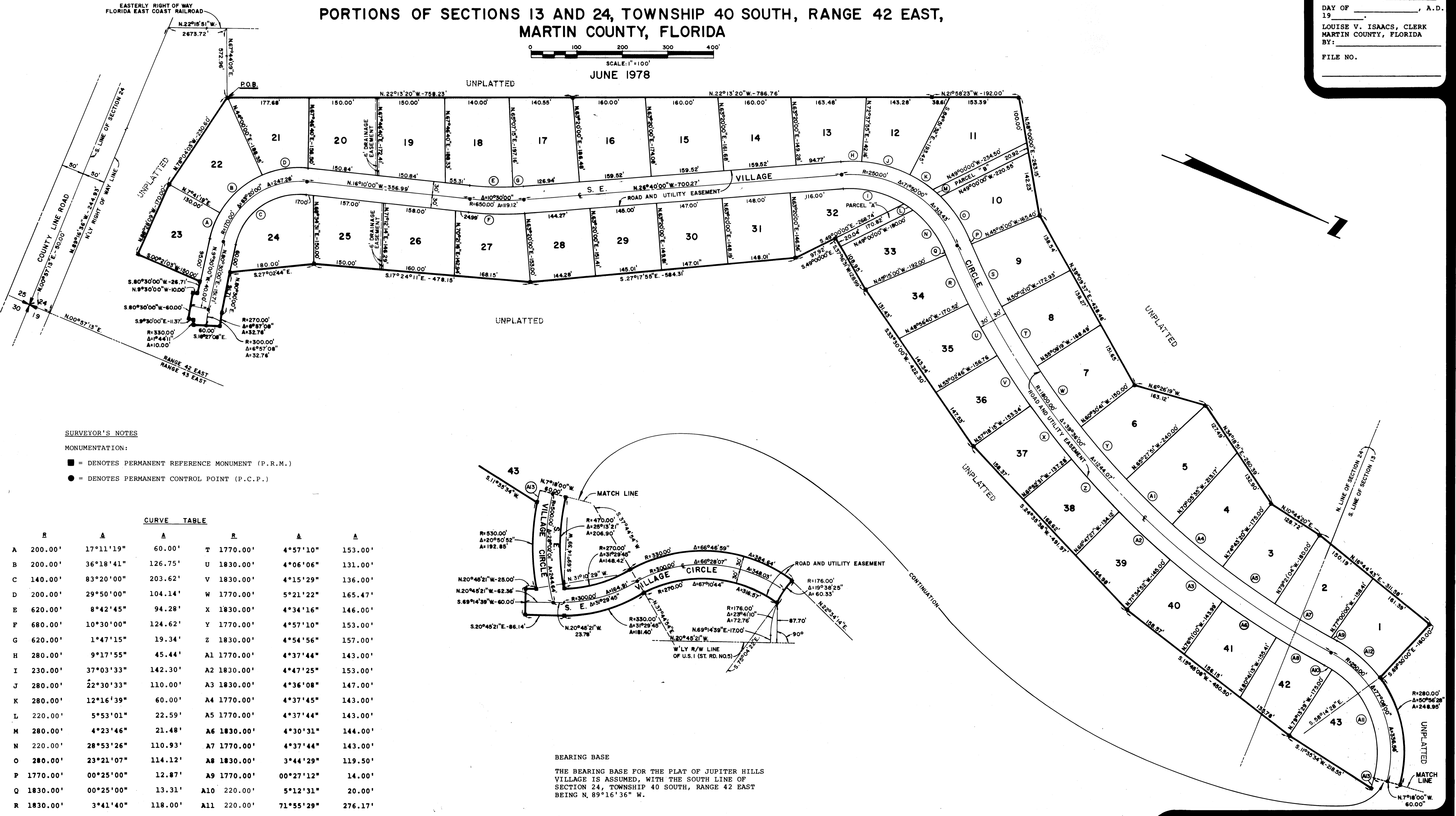


A PLAT OF JUPITER HILLS VILLAGE

PHASE I
 PORTIONS OF SECTIONS 13 AND 24, TOWNSHIP 40 SOUTH, RANGE 42 EAST,
 MARTIN COUNTY, FLORIDA

SCALE: 1" = 100'
 JUNE 1978

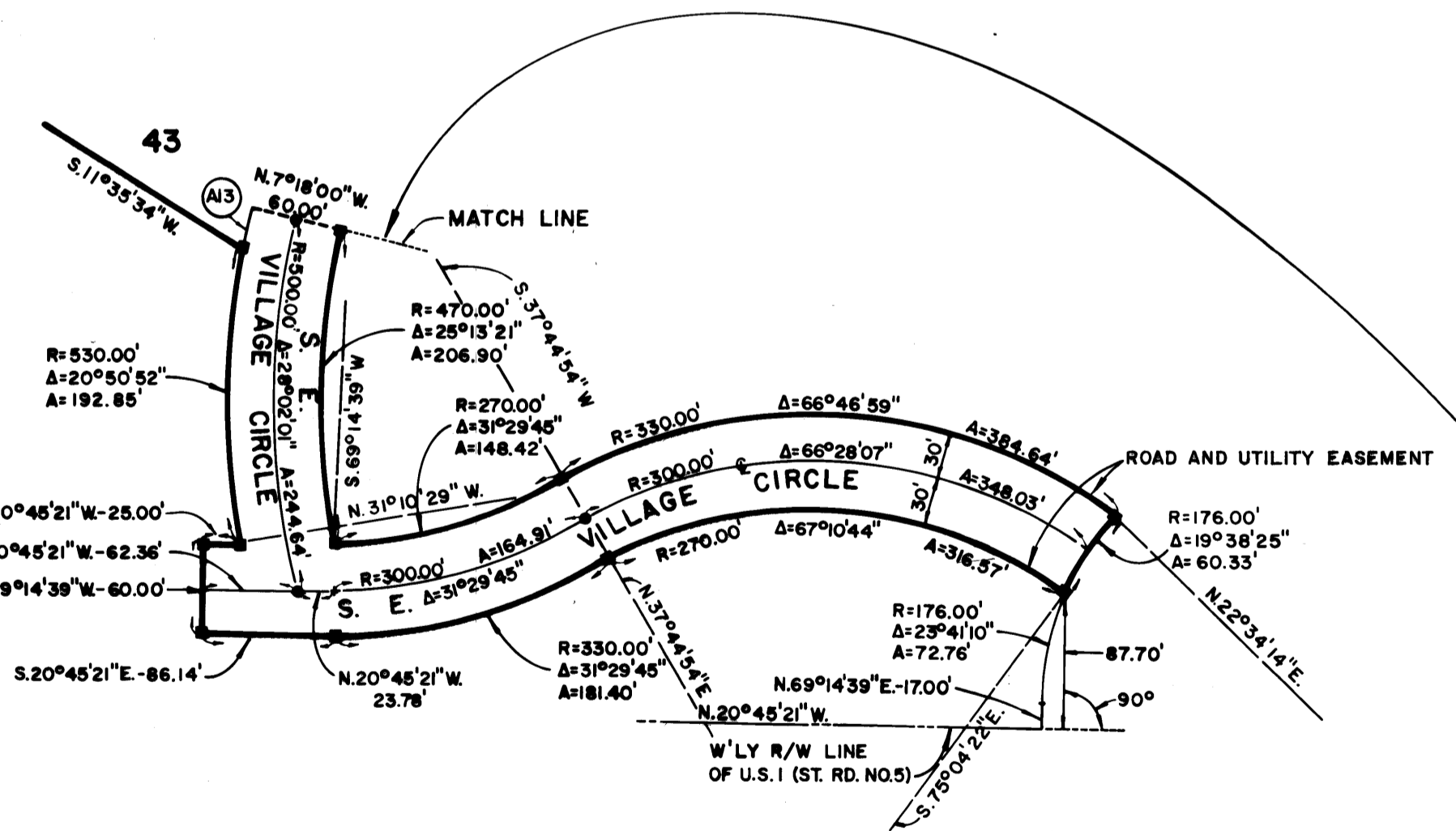
I, LOUISE V. ISAACS,
 COUNTY CLERK OF MARTIN
 COUNTY, FLORIDA, HEREBY
 CERTIFY THAT THIS PLAT
 HAS BEEN EXAMINED AND
 THAT IT COMPLIES IN FORM
 WITH ALL THE REQUIREMENTS
 OF THE STATUTES OF FLORIDA
 PERTAINING TO MAPS AND
 PLATS, AND THAT THIS PLAT
 HAS BEEN FILED FOR RECORD
 IN PLAT BOOK 7,
 PAGE 141, PUBLIC
 RECORDS OF MARTIN COUNTY,
 FLORIDA, THIS
 DAY OF _____, A.D.
 19_____
 LOUISE V. ISAACS, CLERK
 MARTIN COUNTY, FLORIDA
 BY: _____
 FILE NO. _____



SURVEYOR'S NOTES
 MONUMENTATION:
 ■ = DENOTES PERMANENT REFERENCE MONUMENT (P.R.M.)
 ● = DENOTES PERMANENT CONTROL POINT (P.C.P.)

CURVE TABLE

R	A	A	R	A	A		
A	200.00'	17°11'19"	60.00'	T	1770.00'	4°57'10"	153.00'
B	200.00'	36°18'41"	126.75'	U	1830.00'	4°06'06"	131.00'
C	140.00'	83°20'00"	203.62'	V	1830.00'	4°15'29"	136.00'
D	200.00'	29°50'00"	104.14'	W	1770.00'	5°21'22"	165.47'
E	620.00'	8°42'45"	94.28'	X	1830.00'	4°34'16"	146.00'
F	680.00'	10°30'00"	124.62'	Y	1770.00'	4°57'10"	153.00'
G	620.00'	1°47'15"	19.34'	Z	1830.00'	4°54'56"	157.00'
H	280.00'	9°17'55"	45.44'	A1	1770.00'	4°37'44"	143.00'
I	230.00'	37°03'33"	142.30'	A2	1830.00'	4°47'25"	153.00'
J	280.00'	22°30'33"	110.00'	A3	1830.00'	4°36'08"	147.00'
K	280.00'	12°16'39"	60.00'	A4	1770.00'	4°37'45"	143.00'
L	220.00'	5°53'01"	22.59'	A5	1770.00'	4°37'44"	143.00'
M	280.00'	4°23'46"	21.48'	A6	1830.00'	4°30'31"	144.00'
N	220.00'	28°53'26"	110.93'	A7	1770.00'	4°37'44"	143.00'
O	280.00'	23°21'07"	114.12'	A8	1830.00'	3°44'29"	119.50'
P	1770.00'	00°25'00"	12.87'	A9	1770.00'	00°27'12"	14.00'
Q	1830.00'	00°25'00"	13.31'	A10	220.00'	5°12'31"	20.00'
R	1830.00'	3°41'40"	118.00'	A11	220.00'	71°55'29"	276.17'
S	1770.00'	4°57'10"	153.00'	A12	280.00'	26°11'32"	128.00'
				A13	530.00'	3°01'37"	28.00'



BEARING BASE
 THE BEARING BASE FOR THE PLAT OF JUPITER HILLS VILLAGE IS ASSUMED, WITH THE SOUTH LINE OF SECTION 24, TOWNSHIP 40 SOUTH, RANGE 42 EAST BEING N 89°16'36" W.