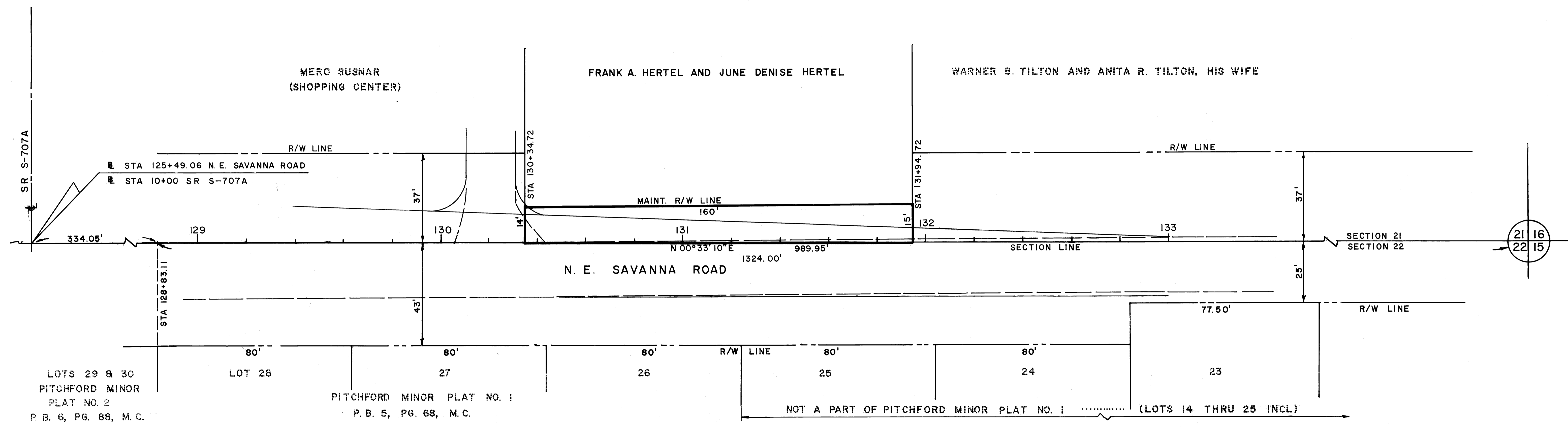


FILED FOR RECORD
MARTIN COUNTY, FLA.
78 JUL 31 A9: 06
LOUISE V. ISAACS
CLERK OF CIRCUIT COURT
BY _____, C.C.

PB 7-55

SCALE 1"=20'
TWP 37S R6E 41E



AFFIDAVIT

STATE OF FLORIDA
COUNTY OF MARTIN

BEFORE ME, THE UNDERSIGNED AUTHORITY, DULY AUTHORIZED IN THE STATE AND COUNTY AFORESAID TO ADMINISTER OATHS AND TAKE ACKNOWLEDGMENTS, PERSONALLY APPEARED C.E. RAULERSON, AS ROAD SUPERINTENDENT, WHO, AFTER BEING DULY SWORN, DEPOSES AND SAYS ON OATH AS FOLLOWS:

- I, THE UNDERSIGNED, BEING COUNTY ROAD SUPERINTENDENT OF MARTIN COUNTY, FLORIDA, AND AS SUCH A DULY QUALIFIED EMPLOYEE OF SAID MARTIN COUNTY, DO AVER THAT I AM THOROUGHLY FAMILIAR WITH ALL OF THE ROADS IN MARTIN COUNTY, FLORIDA AND WITH THE PROGRAM OF MAINTENANCE AND IMPROVEMENT THEREOF. THAT I HAVE BEEN ASSOCIATED IN PRESENT OR SIMILAR CAPACITY ON ROAD PROGRAMS IN SAID COUNTY FOR A PERIOD IN EXCESS OF 19 YEARS.
- THAT TO MY PERSONAL KNOWLEDGE AND OBSERVATION THE ROAD KNOWN AND DESCRIBED AS N.E. SAVANNA ROAD, LYING NORTH OF N.E. COMMERCIAL STREET (SR S-707A) ALL WITHIN MARTIN COUNTY AS LOCATED AS SHOWN ON THE ABOVE MAP WAS CONSTRUCTED BY AND HAS BEEN MAINTAINED AND REPAIRED CONTINUOUSLY AND UNINTERRUPTED FOR 15 YEARS BY THE MARTIN COUNTY ROAD AND BRIDGE DEPARTMENT. FURTHER THAT THE MAINTENANCE OF SAID PORTION OF N.E. SAVANNA ROAD CONSISTS OF MOWING, PERIODIC MAINTENANCE OF SWALE, GRADING OF SHOULDER, AND PATCHING OF EXISTING PAVEMENT.

FURTHER AFFIANT SAYETH NOT.
THIS 21ST DAY OF JUNE, 1978.

C.E. Raulerson
ROAD SUPERINTENDENT

(NOTARY SEAL)

SWORN TO AND SUBSCRIBED BEFORE ME THIS 21ST DAY OF JUNE, 1978 BY C.E. RAULERSON AS SUPERINTENDENT, AT STUART, MARTIN COUNTY, FLORIDA. WITNESS MY HAND AND OFFICIAL SEAL IN THE COUNTY AND STATE LAST AFORESAID THIS 21ST DAY OF JUNE, 1978.

Alfred W. Hutchins
NOTARY PUBLIC, STATE OF FLORIDA AT LARGE
MY COMMISSION EXPIRES: JULY 21, 1978

PURSUANT TO SECTION 95.361(1), FLORIDA STATUTES, (1977) THE PORTIONS OF N.E. SAVANNA ROAD BETWEEN STATION 130+34.72 AND STATION 131+94.72 AND BETWEEN THE SECTION LINE AND THE MAINTENANCE R/W LINE, ALL WITHIN MARTIN COUNTY AND LOCATED AS SHOWN ON THE ABOVE MAP, SHALL HEREAFTER BE DEEMED DEDICATED TO THE PUBLIC AND ALL RIGHT, TITLE, EASEMENTS AND APPURTENANCES ARE HEREBY VESTED IN MARTIN COUNTY, FLORIDA.

CERTIFIED BY: BOARD OF COUNTY COMMISSIONERS

Louise V. Isaacs
LOUISE V. ISAACS, CLERK
By Charlotte Burkey CC

BY: William G. Myers
WILLIAM G. MYERS, CHAIRMAN

ACCEPTED FOR FILES AND RECORDED IN THE PUBLIC RECORDS OF MARTIN COUNTY, FLORIDA. THIS 31ST DAY OF JULY, A. D. 1978 IN PLAT BOOK 7, PAGE 55.

Louise V. Isaacs
CLERK OF CIRCUIT COURT OF MARTIN COUNTY, FLORIDA
By Charlotte Burkey CC
File: 312203

N.E. SAVANNA ROAD			
MARTIN COUNTY, FLORIDA			
ENGINEERING DEPARTMENT			
MAINTENANCE MAP			
N.E. SAVANNA ROAD		MARTIN COUNTY	
DRAWN	BY	DATE	APPROVED BY
CHECKED	AWH	6-9-78	<u>June 30, 1978</u>
INDEXED			COUNTY ENGINEER