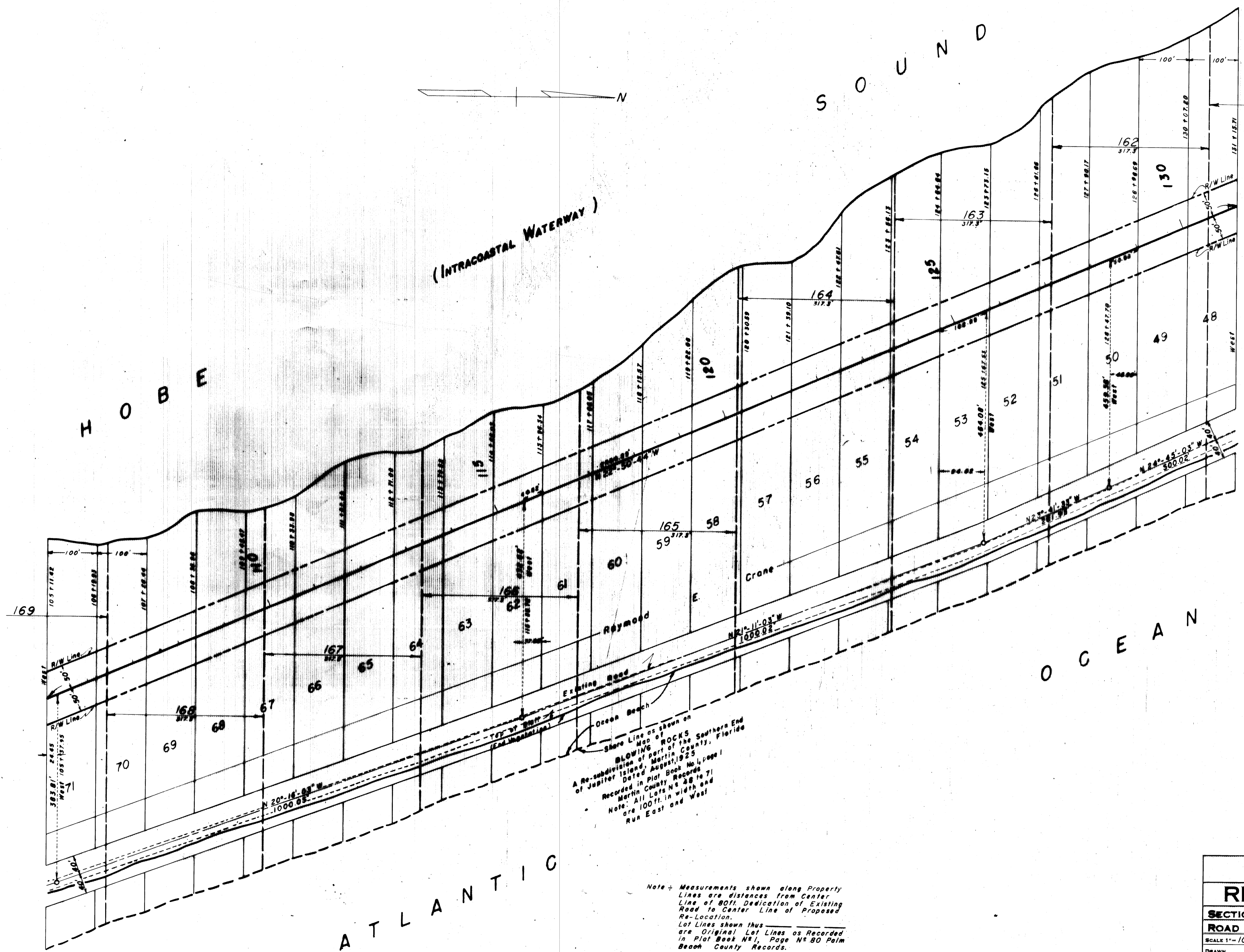


P.B. 7 pg. 50

FED. ROAD DIV. No.	STATE	SEC. AND JOB No.	FISCAL YEAR	SHEET No.	TOTAL SHEETS
3	FLA.	8903-104	53	2	7

P.B. 7 pg. 50



(INTRACOASTAL WATERWAY)

H O B B E

S O U N D

O C E A N

A T L A N T I C

A Re-subdivision of part of the Southern End of Jupiter Island, Martin County, Florida Dated August, 1925 Recorded in Plat Book No. 1, page 1 Martin County Records.  
 Note: All Lots N & S are 100 ft. in width and Run East and West

Note - Measurements shown along Property Lines are distances from Center Line of 80 ft. Dedication of Existing Road to Center Line of Proposed Re-Location.  
 Lot Lines shown thus \_\_\_\_\_ are Original Lot Lines as Recorded in Plat Book No. 1, Page No. 80 Palm Beach County Records.

STATE OF FLORIDA STATE ROAD DEPARTMENT			
<b>RIGHT OF WAY MAP</b>			
SECTION No. 8903-104			
ROAD No. 707		MARTIN COUNTY	
SCALE 1"=100'	NAMES	DATE	APPROVED BY
DRAWN	Collins	2-53	<i>W. J. Carleton</i> DIVISION ENGINEER
TRACED	Kepner	2-53	
INDEXED			
REVISED			
REVISED			