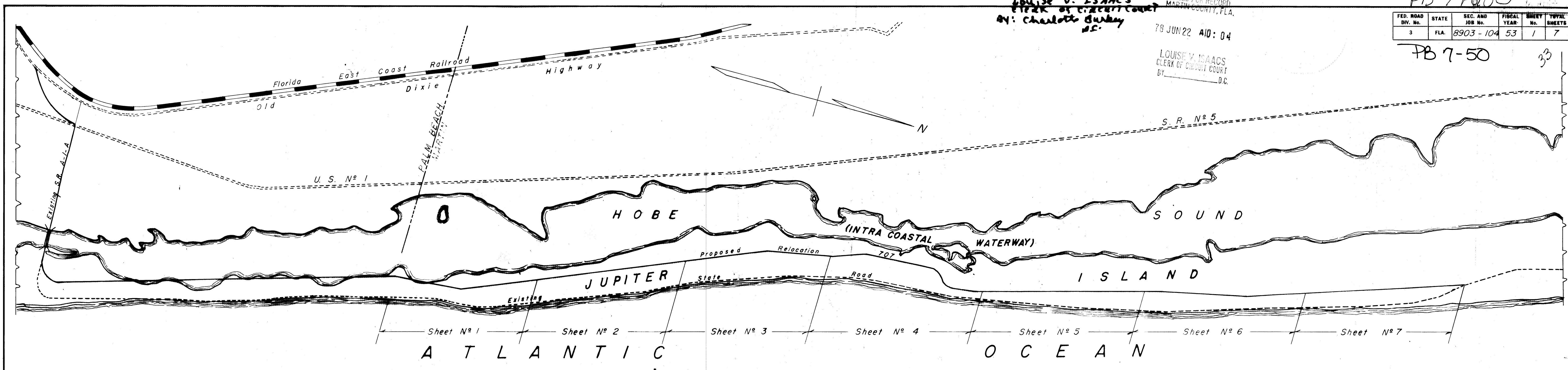


FILE # 308492
 DATE: JUNE 22, 1978
 LOUISE V. ISAACS
 CLERK OF CIRCUIT COURT
 BY: Charlotte Busby
 J.C.

FILED FOR RECORD
 MARTIN COUNTY, FLA.
 78 JUN 22 AID: 04
 LOUISE V. ISAACS
 CLERK OF CIRCUIT COURT
 BY: J.C.

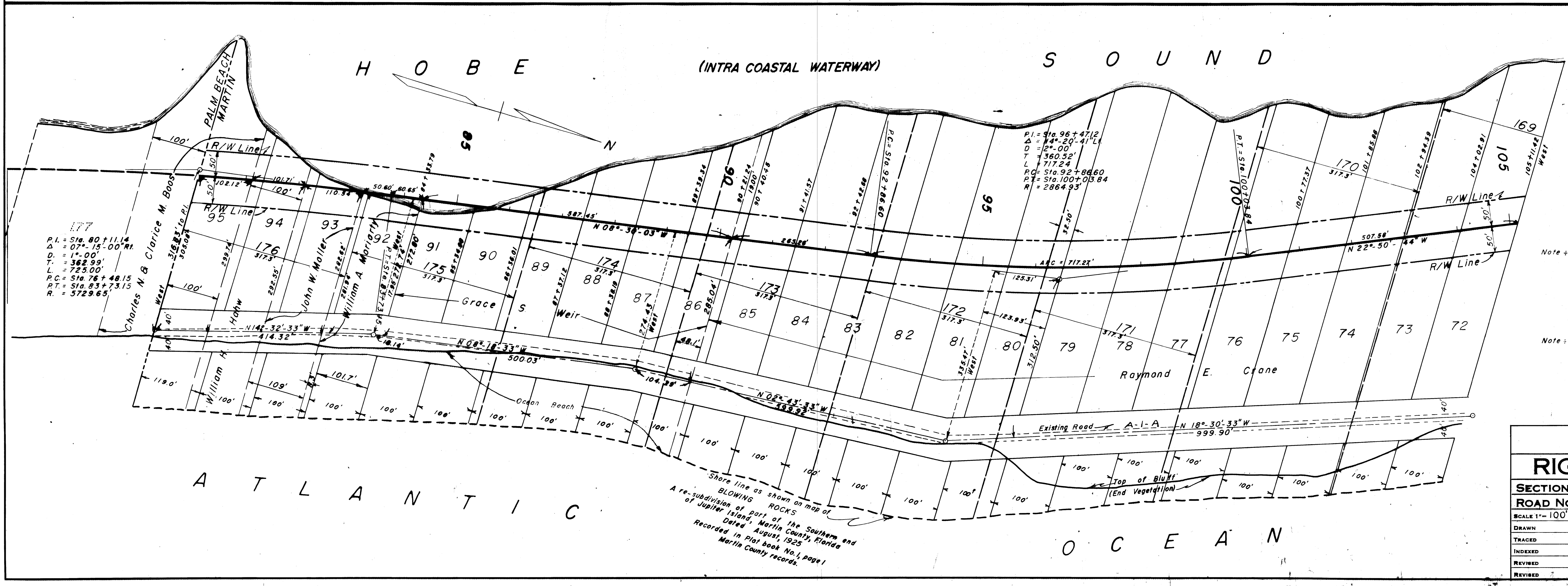
FED. ROAD DIV. NO.	STATE	SEC. AND JOB NO.	FISCAL YEAR	SHEET NO.	TOTAL SHEETS
3	FLA.	8903-104	53	1	7

PB 7-50



KEY MAP

Scale 1" = 860'



Note: Measurements shown along Property Lines are distances from Center Line of 80ft. Dedication of Existing Road to Center Line of Proposed Re-Location.
 Lot Lines shown thus are Original Lot Lines as Recorded in Plat Book No. 7, Page No. 80 Palm Beach County Records.

Note: All bearings shown are true Meridians as taken from Sheet No. 25/2 of Intra-Coastal Water-way R/W Map.

STATE OF FLORIDA
 STATE ROAD DEPARTMENT
RIGHT OF WAY MAP
 SECTION No. 8903-104
 ROAD No. 707
 MARTIN COUNTY

SCALE 1" = 100'	NAMES	DATES	APPROVED BY
DRAWN	Collins	2-53	<i>Wanda Carter</i> DIVISION ENGINEER
TRACED	Leahy		
INDEXED			<i>Stanley</i> STATE HIGHWAY ENGINEER
REVISED			

Shore line as shown on map of BLOWING ROCKS
 A re-subdivision of part of the Southern end of Jupiter Island, Martin County, Florida
 Dated August, 1925
 Recorded in Plat Book No. 1, page 1
 Martin County records.