

PHASE THREE

LEILANI HEIGHTS

A SUBDIVISION IN SECTION 22, TOWNSHIP 37 SOUTH, RANGE 41 EAST, MARTIN COUNTY, FLORIDA

LEGAL DESCRIPTION

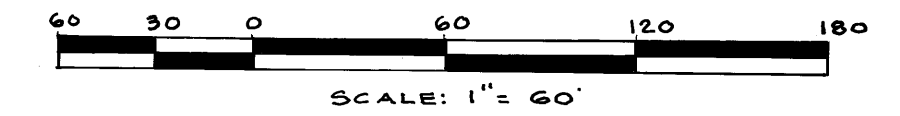
The South one half of the Southeast one quarter of the Southwest one quarter of Section 22, Township 37 South, Range 41 East, Martin County, Florida together with a part of Lot 11, Block 5, Leilani Heights Phase One, as recorded in Plat Book 6, Page 23, Martin County, Florida, public records being more particularly described as follows: Begin at the Southwest corner of said lot 11, bear South 89° 34' 10" East along the South line of said lot a distance of 50 feet; Thence North 0° 25' 50" East, a distance of 82.44 feet to the point of curvature of a curve concave to the East having a central angle of 9° 11' 06" and a radius of 156.44 feet; Thence, Northerly along the arc of said curve a distance of 25.08 feet to the North line of said lot 11; Thence North 89° 28' 20" West along said line a distance of 52.01 feet to the Northwest corner of said lot; Thence South 0° 25' 50" West, along the West line of said lot a distance of 107.50 feet to the Point of Beginning.

CERTIFICATE OF APPROVAL OF COUNTY CLERK

I, Louise V. Isaacs, Clerk of the Circuit Court of Martin County, Florida hereby certify that this plat filed for record in Plat Book 7, Page 27, Martin County, Florida, public records, this 12th day of August, 1977.

LOUISE V. ISAACS, CLERK CIRCUIT COURT MARTIN COUNTY, FLORIDA BY: Charlotte Burkey Deputy Clerk

File No. 280522



NOTE: ALL BEARINGS SHOWN ARE REFERENCED TO A BEARING OF N.0° 10' 10" E. ON E. OF STATE ROAD 72.3.

CERTIFICATE OF OWNERSHIP AND DEDICATION

Pine Forest Land and Development Corporation, a Florida corporation by and through its undersigned officers does hereby certify that it is the owner of the property described hereon and does hereby dedicate all of the streets, walkways and thoroughfares shown on this plat of PHASE THREE-LEILANI HEIGHTS to the use of the public and will further dedicate and convey to an association of the owners within this plat all the reserved areas (noted as R.A.'s) shown on this plat. The utility easements shown on this plat of PHASE THREE-LEILANI HEIGHTS may be used for utility purposes by any utility in compliance with such ordinances and regulations as may be adopted from time to time by the Board of County Commissioners of Martin County.

SIGNED AND SEALED this 13th day of JUNE, 1977 on behalf of said corporation by its President and attested to by its Secretary.

Signed, sealed and delivered in the presence of: Pine Forest Land and Development Corporation BY: Wayne E. Judah, its President ATTEST: Robert H. Coy, its Secretary

ACKNOWLEDGMENT

STATE OF FLORIDA ss COUNTY OF MARTIN Before Me, the undersigned notary public, personally appeared Wayne E. Judah and Robert H. Coy, to me well known to be the President and Secretary, respectively, of Pine Forest Land and Development Corporation, a Florida corporation, and they acknowledged that they executed such instruments as such officers of said corporation. WITNESS my hand and official seal this 13th day of June 1977.

Sandra B. Simmons Notary Public State of Florida at large My Commission expires: 10/5/79

MORTGAGE HOLDER'S CONSENT

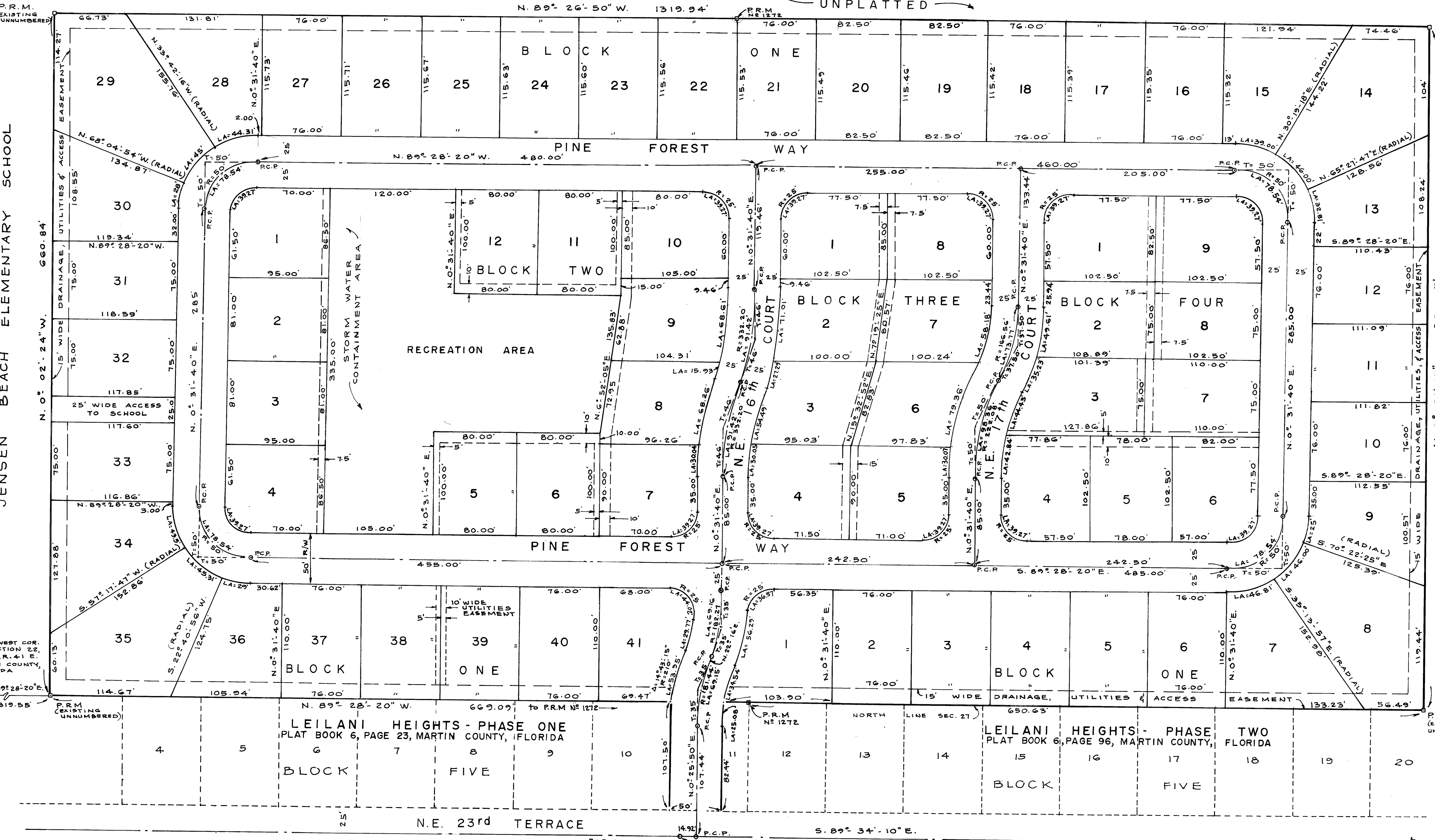
STATE OF FLORIDA ss COUNTY OF MARTIN The undersigned mortgagee hereby joins in and consents to the areas dedicated hereon which they might claim under the mortgage held by them on said property. In Witness, whereof, the undersigned corporation has caused these presents to be executed by C.R. Schudt its President and attested by James C. Anthony, III its Secretary.

FIRST NATIONAL BANK AND TRUST COMPANY OF STUART BY: [Signature]

ACKNOWLEDGMENT

STATE OF FLORIDA ss COUNTY OF MARTIN Before Me, the undersigned notary public, personally appeared C.R. Schudt and James C. Anthony and they acknowledged that they executed such instrument as such officers of First National Bank and Trust Company of Stuart.

WITNESS my hand and official seal this 13th day of June, 1977. My Commission expires: 2-29-82 Anna P. Cattania Notary Public State of Florida at large



APPROVAL OF COUNTY

This plat is hereby approved by the undersigned on the date or dates indicated. James E. Wynn County Engineer Aug 11, 1977. Board of County Commissioners Martin County, Florida By: Chairman Aug 11, 1977. ATTEST: Louise V. Isaacs Clerk By Charlotte Burkey, D.C.

TITLE CERTIFICATION

I, John E. Prewitt, a member of the Florida Bar, hereby certify that: 1. Apparent record title is in the corporation which executed the dedication hereon. 2. All mortgages not satisfied or released of record encumbering the lands described hereon are as follows: Mortgage - Pine Forest Land and Development Corporation, a Florida corporation. Mortgage - First National Bank and Trust Company of Stuart. Dated November 18, 1976 and recorded in Official Records Book 409, Page 2359, Martin County, Florida, public records. Dated this 1st day of June, 1977

John E. Prewitt Attorney-at-Law

SURVEYOR'S CERTIFICATE

I, W. Ladon Williams, do hereby certify that this plat of PHASE THREE-LEILANI HEIGHTS, is a true and correct representation of the lands surveyed, and that the survey was made under my supervision, and that the survey data complies with all the requirements of Chapter 177, Florida Statutes.

W. Ladon Williams Registered Land Surveyor Florida Certificate No. 1272

GENERAL NOTES

All side lot lines to have 6' wide Utility Easement (3' either side of lot line.) Except where otherwise noted or shown. Dashed lines in Blocks 2, 3, & 4 indicate location of Utility Easements