

PHASE ONE, MID-RIVERS YACHT AND COUNTRY CLUB

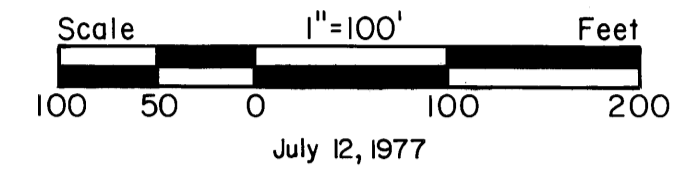
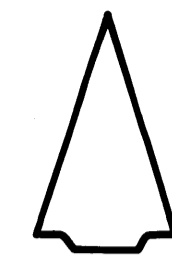
Lying In
Sections 1,2,&3, Township 38 South, Range 40 East
Martin County, Florida

I, LOUISE V. ISAACS, CLERK OF THE CIRCUIT COURT OF MARTIN COUNTY, FLORIDA, HEREBY CERTIFY THAT THIS PLAT WAS FILED FOR RECORD IN PLAT BOOK 7, PAGE 23, MARTIN COUNTY FLORIDA, PUBLIC RECORDS, THIS DAY OF July 12, 1977.

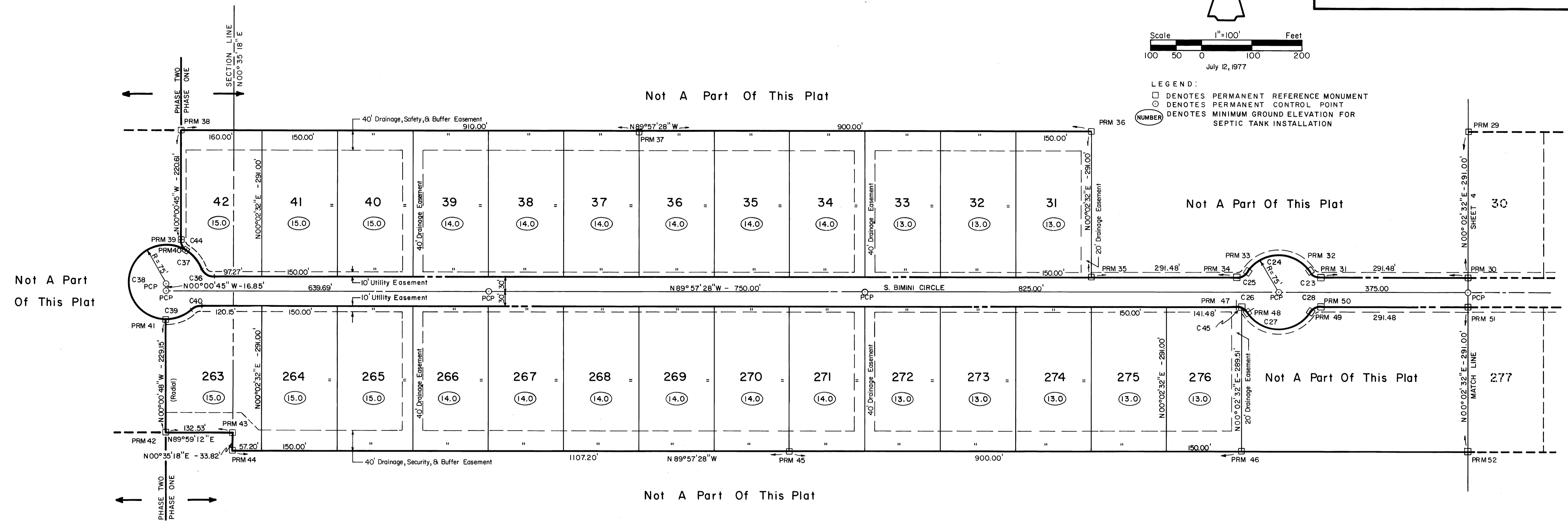
LOUISE V. ISAACS, CLERK
CIRCUIT COURT
MARTIN COUNTY, FLORIDA

FILE NO. _____
BY: _____ DEPUTY CLERK

NORTH



LEGEND:
 □ DENOTES PERMANENT REFERENCE MONUMENT
 ○ DENOTES PERMANENT CONTROL POINT
 (NUMBER) DENOTES MINIMUM GROUND ELEVATION FOR SEPTIC TANK INSTALLATION



Curve	Radius	Delta	Arc	Tangent	Chord	Chord Bearing
C 23	25.00'	56° 37' 59"	24.71'	13.47'	23.72'	S 61° 38' 29" E
C 24	75.00'	113° 15' 57"	148.26'	113.89'	125.27'	N 89° 57' 28" W
C 25	25.00'	56° 37' 59"	24.71'	13.47'	23.72'	S 61° 43' 33" W
C 26	25.00'	56° 37' 59"	24.71'	13.47'	23.72'	S 61° 38' 29" E
C 27	75.00'	113° 15' 57"	148.26'	113.89'	125.27'	N 89° 57' 28" W
C 28	25.00'	56° 37' 59"	24.71'	13.47'	23.72'	S 61° 43' 33" W
C 36	25.00'	67° 34' 15"	29.48'	16.73'	27.80'	S 56° 10' 20" E
C 37	75.00'	34° 15' 32"	44.84'	23.12'	44.18'	S 39° 30' 58" E
C 38	75.00'	213° 22' 04"	279.30'	250.24'	143.69'	N 16° 40' 14" E
C 39	75.00'	44° 01' 00"	57.62'	30.31'	56.21'	N 67° 58' 41" E
C 40	75.00'	111° 38' 36"	146.14'	110.45'	124.09'	N 11° 47' 29" E
C 44	25.00'	56° 37' 59"	24.71'	13.47'	23.72'	S 28° 19' 45" E
C 45	25.00'	19° 55' 01"	8.69'	4.38'	8.65'	S 79° 59' 57" E