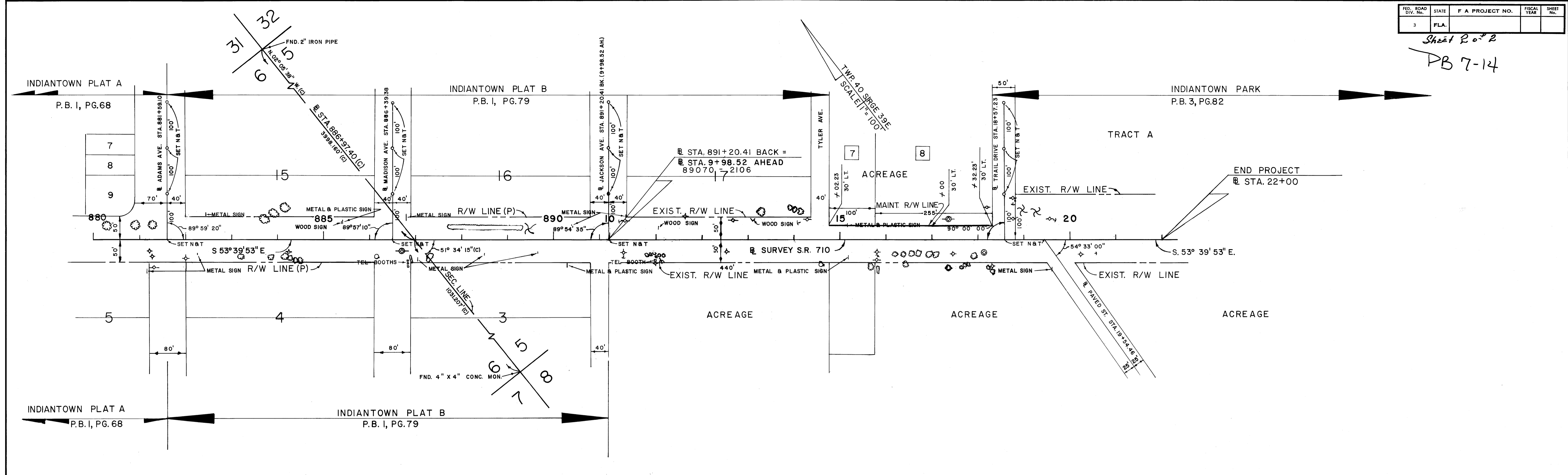


FED. ROAD DIV. No.	STATE	F A PROJECT NO.	FISCAL YEAR	SHEET No.
3	FLA.			

Sheet 2 of 2
PB 7-14



THIS IS TO CERTIFY THAT THE WITHIN AND ATTACHED SHEETS NUMBERED ONE A (1A) TO TWO A(2A) INCLUSIVE, CONSTITUTE A TRUE COPY OF THE OFFICIAL RIGHT OF WAY MAP SHOWING LOCATION AND SURVEY BY THE STATE OF FLORIDA DEPARTMENT OF TRANSPORTATION FOR A PORTION OF STATE ROAD 710, DESIGNATED AS SECTION 89070 IN MARTIN COUNTY, FLORIDA.

THE PROPERTY OUTLINED IN RED INK, AND LABELED MAINT. R/W LINE ON THE SAID SHEETS HAS BEEN VESTED IN THE STATE OF FLORIDA DEPARTMENT OF TRANSPORTATION, PURSUANT TO THE PROVISIONS OF SECTION 341.59 FLORIDA STATUTES OF 1951, SECTION 337.31 FLORIDA STATUTES OF 1955 AND SECTION 95.361 FLORIDA STATUTES OF 1974, AND/OR UNDER FORMAL CONVEYANCE AND OTHER INSTRUMENTS.

IN WITNESS WHEREOF, WE HAVE HEREUNTO SET OUR HANDS AND AFFIXED THE SEAL OF THE STATE OF FLORIDA DEPARTMENT OF TRANSPORTATION AT TALLAHASSEE, FLORIDA, THIS 23rd DAY OF Feb., A.D. 1977.

Tom Webb
SECRETARY OF TRANSPORTATION,
STATE OF FLORIDA DEPARTMENT
OF TRANSPORTATION

Carilyn Scardin
EXECUTIVE SECRETARY, STATE OF
FLORIDA DEPARTMENT OF TRANSPORTATION

THIS IS TO CERTIFY THAT THE RIGHT OF WAY LIMITS AS SHOWN ON THIS MAP HAVE BEEN MAINTAINED CONTINUOUSLY FOR FOUR (4) YEARS IMMEDIATELY PAST WITHOUT INTERRUPTION OR DISTURBANCE BETWEEN MILE POSTS 15.110 AND 16.550, (S.L.D.)

J.R. Thayer
MAINTENANCE ENGINEER

ACCEPTED FOR FILES AND RECORDED IN THE PUBLIC RECORDS OF MARTIN COUNTY, FLORIDA, THIS 30th DAY OF March, A.D. 1977 IN PLAT BOOK 7, PAGE 14.

Louise V. Isaacs
CLERK OF CIRCUIT COURT OF MARTIN
COUNTY, FLORIDA
By: *Pat Griffin, D.C.*

STATE OF FLORIDA DEPARTMENT OF TRANSPORTATION				
MAINTENANCE MAP				
STATE ROAD NO. 710		MARTIN COUNTY		
BY	DATE	APPROVED BY	DATE	
DRAWN	GRAY	10-14-76	<i>William L. ...</i>	
TRACED	GRAY	10-14-76	DISTRICT ENGINEER	
CHECKED	HALL	10-18-76	<i>J.C. ...</i>	
COMPARED			ENGINEER OF RIGHT OF WAY	
INDEXED			STATE HIGHWAY ENGINEER	
REVISION	BY	DATE	SECTION 89070-2515 A SHEET 2A OF 2	
B.I. NO. 416169				