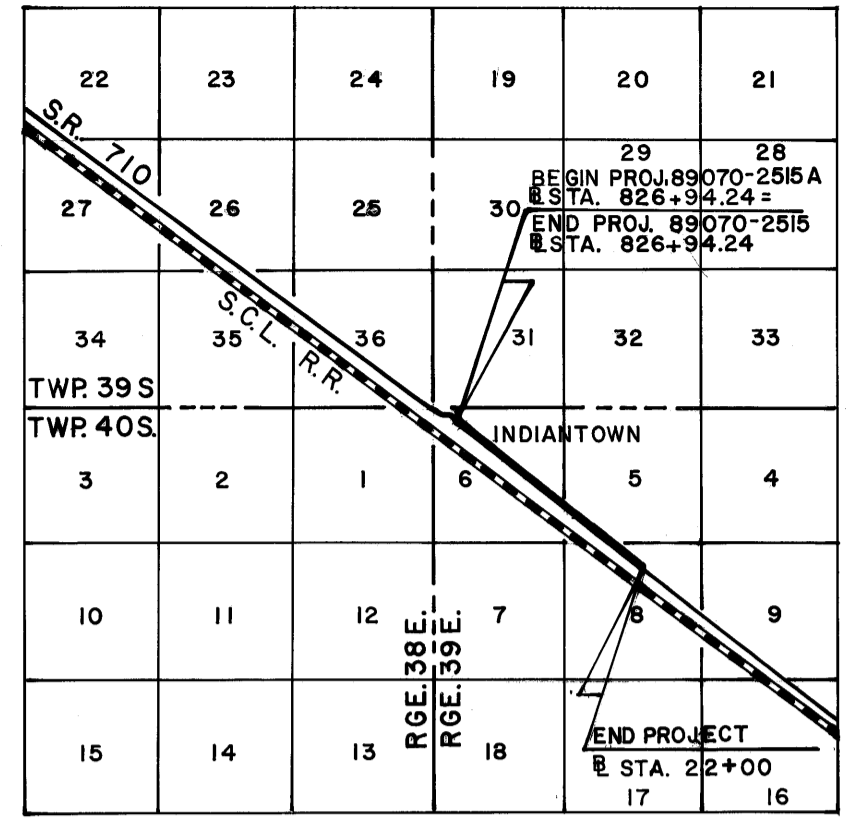


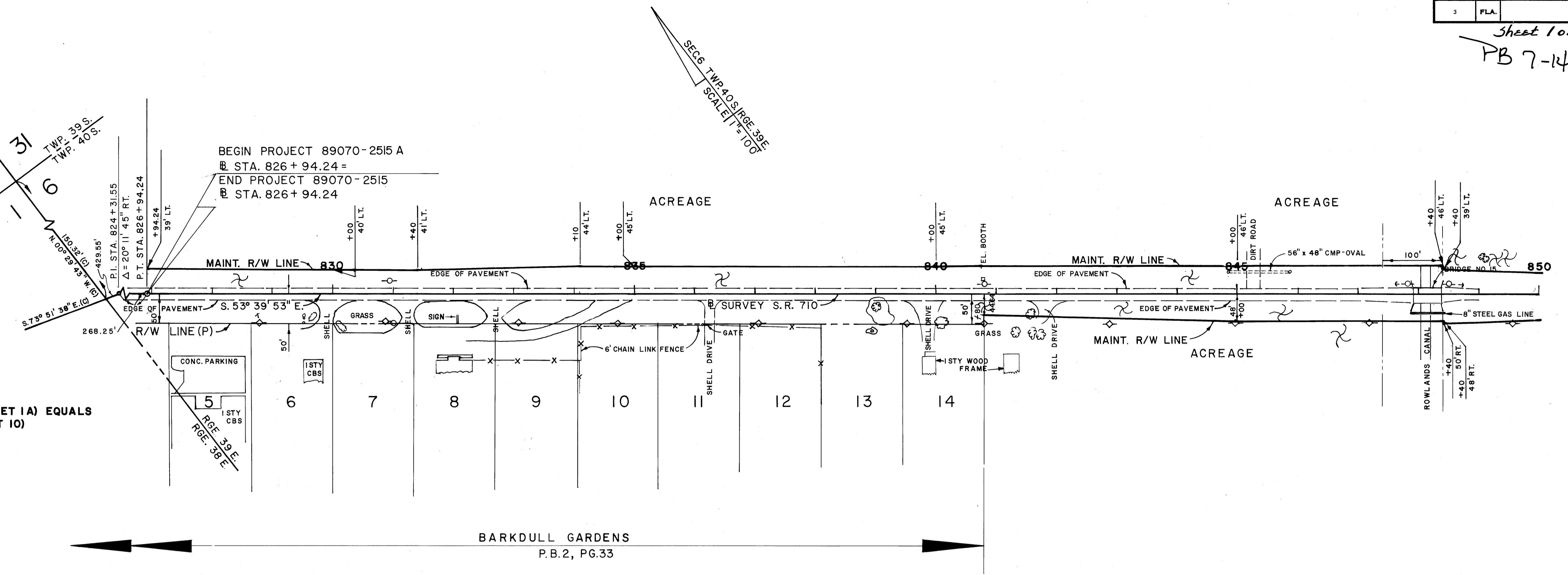
FED. ROAD DIV. No.	STATE	F A PROJECT NO.	FISCAL YEAR	SHEET No.
3	FLA.			

Sheet 1 of 2  
PB 7-14



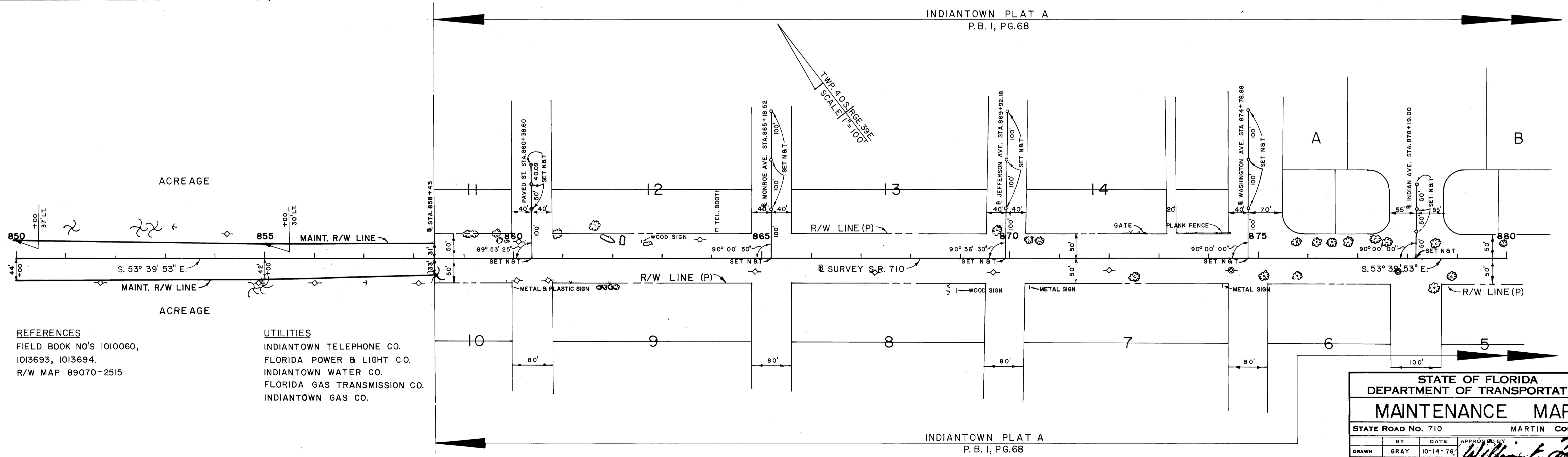
LOCATION SKETCH  
"NOT TO SCALE"

NOTE:  
BEGIN PROJECT 89070-2515 A STA. 826+94.24 (SHEET 1A) EQUALS  
END PROJECT 89070-2515 STA. 826+94.24 (SHEET 10)



BARKDULL GARDENS  
P.B. 2, PG. 33

INDIANTOWN PLAT A  
P.B. 1, PG. 68



INDIANTOWN PLAT A  
P.B. 1, PG. 68

REFERENCES  
FIELD BOOK NO'S 1010060,  
1013693, 1013694.  
R/W MAP 89070-2515

UTILITIES  
INDIANTOWN TELEPHONE CO.  
FLORIDA POWER & LIGHT CO.  
INDIANTOWN WATER CO.  
FLORIDA GAS TRANSMISSION CO.  
INDIANTOWN GAS CO.

STATE OF FLORIDA DEPARTMENT OF TRANSPORTATION				
MAINTENANCE MAP				
STATE ROAD NO. 710		MARTIN COUNTY		
BY	DATE	APPROVED BY	DATE	
DRAWN	GRAY 10-14-76	<i>William E. Cook</i>		
TRACED	GRAY 10-14-76	DISTRICT ENGINEER		
CHECKED	HALL 10-18-76	<i>H. L. ...</i>	2-22-77	
COMPARED		ENGINEER OF RIGHT OF WAY		
INDEXED		STATE HIGHWAY ENGINEER		
SECTION 89070-2515 A		SHEET 1A OF 2		

REVISION	BY	DATE