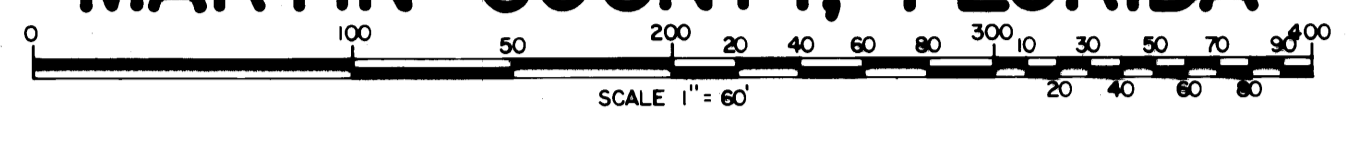


# HERITAGE OAKS

A SUBDIVISION IN GOVERNMENT LOTS 2 & 3 IN SECTION 23, TOWNSHIP 40 SOUTH, RANGE 42 EAST, IN  
MARTIN COUNTY, FLORIDA

SHEET 7 OF 8 SHEETS

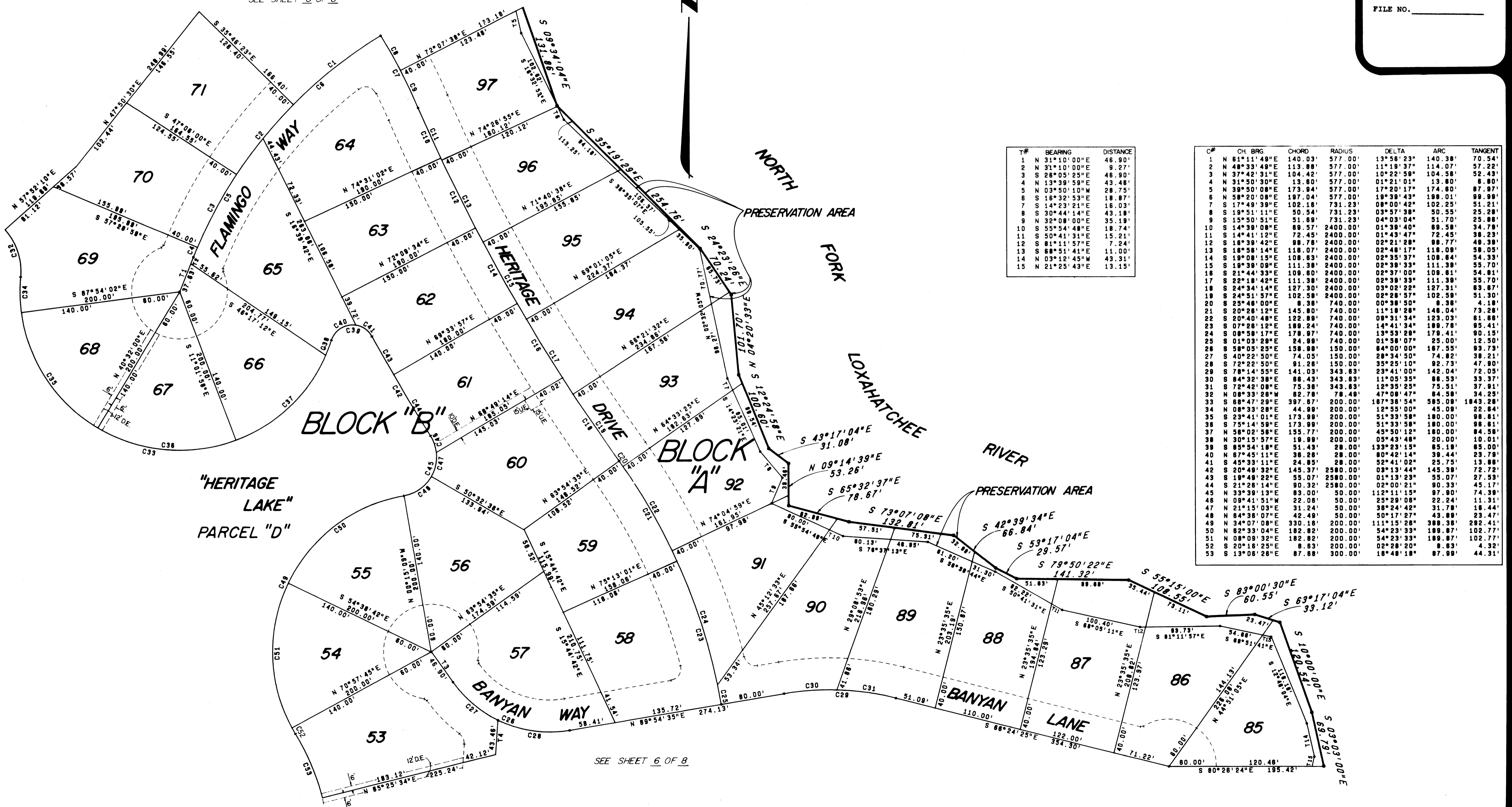
JANUARY 1977



I, LOUISE V. ISAACS, CLERK OF THE CIRCUIT COURT OF MARTIN COUNTY, FLORIDA HEREBY CERTIFY THAT THIS PLAT WAS FILED FOR RECORD IN PLAT BOOK 7, PAGE 10, MARTIN COUNTY, FLORIDA, PUBLIC RECORDS THIS \_\_\_\_\_ DAY OF \_\_\_\_\_, 19\_\_\_\_.

LOUISE V. ISAACS, CLERK  
CIRCUIT COURT  
MARTIN COUNTY, FLORIDA  
BY: \_\_\_\_\_  
DEPUTY CLERK  
FILE NO. \_\_\_\_\_

SEE SHEET 8 OF 8



T#	BEARING	DISTANCE
1	N 31°10'00"E	46.90'
2	N 31°10'00"E	9.27'
3	S 26°05'25"E	46.90'
4	N 13°39'59"E	43.48'
5	N 03°50'10"W	28.75'
6	S 16°32'53"E	18.87'
7	S 14°23'21"E	16.03'
8	S 30°44'14"E	43.18'
9	S 32°08'00"E	35.19'
10	S 55°54'48"E	18.74'
11	S 50°41'31"E	15.21'
12	S 81°11'57"E	7.24'
13	S 68°51'41"E	11.00'
14	N 03°12'45"W	43.31'
15	N 21°25'43"E	13.15'

C#	CH. BRG.	CHORD	RADIUS	DELTA	ARC	TANGENT
1	N 61°11'49"E	140.03'	577.00'	13°56'23"	140.38'	70.54'
2	N 48°33'49"E	113.88'	577.00'	11°19'37"	114.07'	57.22'
3	N 37°42'31"E	104.42'	577.00'	10°22'58"	104.58'	52.43'
4	N 31°50'39"E	113.80'	577.00'	01°21'01"	113.80'	57.00'
5	N 39°50'08"E	173.94'	577.00'	17°20'17"	174.60'	87.97'
6	N 58°20'08"E	197.04'	577.00'	18°39'43"	198.01'	99.99'
7	S 17°49'39"E	102.16'	731.23'	08°00'42"	102.25'	51.21'
8	S 19°51'11"E	50.54'	731.23'	03°57'38"	50.55'	25.28'
9	S 15°50'51"E	51.69'	731.23'	04°03'04"	51.70'	25.88'
10	S 14°39'08"E	89.57'	2400.00'	01°39'40"	89.58'	34.79'
11	S 14°41'12"E	72.45'	2400.00'	01°43'47"	72.45'	38.23'
12	S 18°39'42"E	98.78'	2400.00'	02°21'28"	98.77'	48.38'
13	S 18°58'14"E	118.07'	2400.00'	02°48'17"	118.08'	58.05'
14	S 19°08'15"E	108.63'	2400.00'	02°35'37"	108.64'	54.33'
15	S 19°39'09"E	111.38'	2400.00'	02°39'33"	111.39'	55.70'
16	S 21°44'39"E	109.80'	2400.00'	02°37'00"	109.81'	54.81'
17	S 22°18'48"E	111.38'	2400.00'	02°39'33"	111.39'	55.70'
18	S 24°34'14"E	127.30'	2400.00'	03°02'22"	127.31'	63.67'
19	S 24°51'57"E	102.58'	2400.00'	02°28'57"	102.59'	51.30'
20	S 25°48'00"E	8.38'	740.00'	00°38'50"	8.38'	4.18'
21	S 20°28'12"E	145.80'	740.00'	11°18'28"	146.04'	73.28'
22	S 20°40'48"E	122.89'	740.00'	09°31'34"	123.03'	61.88'
23	S 07°28'15"E	189.24'	740.00'	14°41'34"	189.78'	95.41'
24	S 08°58'17"E	178.97'	740.00'	13°53'29"	179.41'	90.15'
25	S 01°03'28"E	24.89'	740.00'	01°58'07"	25.00'	12.50'
26	S 58°05'25"E	158.98'	150.00'	64°00'00"	157.55'	93.73'
27	S 40°22'50"E	74.05'	150.00'	28°34'50"	74.82'	38.21'
28	S 72°22'50"E	91.26'	150.00'	35°25'10"	92.73'	47.90'
29	S 78°14'55"E	141.03'	343.83'	23°41'00"	142.04'	72.05'
30	S 84°32'38"E	88.43'	343.83'	11°05'35"	88.53'	33.37'
31	S 72°42'08"E	75.38'	343.83'	12°35'25"	75.51'	37.91'
32	S 08°33'28"W	82.78'	78.48'	47°08'47"	84.58'	34.25'
33	S 88°47'28"E	397.67'	200.00'	187°38'54"	585.08'	1843.28'
34	S 08°33'28"E	44.99'	200.00'	12°55'00"	45.08'	22.84'
35	S 23°41'01"E	173.99'	200.00'	51°33'58"	180.00'	98.81'
36	S 75°14'58"E	173.99'	200.00'	51°33'58"	180.00'	98.81'
37	S 58°02'58"E	155.77'	200.00'	45°50'12"	160.00'	84.58'
38	S 30°15'57"E	19.99'	200.00'	05°43'48"	20.00'	10.01'
39	S 85°54'18"E	51.43'	28.00'	133°23'15"	85.19'	85.00'
40	N 67°45'11"E	38.28'	28.00'	80°42'14"	39.44'	23.79'
41	S 45°33'11"E	24.85'	28.00'	52°41'02"	25.75'	13.88'
42	S 29°48'39"E	145.37'	2580.00'	03°31'44"	145.39'	72.72'
43	S 19°49'22"E	35.00'	2580.00'	01°13'29"	35.07'	27.53'
44	S 21°26'14"E	80.32'	2580.00'	02°00'21"	80.33'	45.17'
45	S 33°39'13"E	83.00'	50.00'	112°11'15"	97.80'	74.39'
46	S 09°41'51"W	22.08'	50.00'	25°29'08"	22.24'	11.31'
47	N 21°15'03"E	31.24'	50.00'	38°24'42"	31.78'	18.44'
48	S 84°38'07"E	42.49'	50.00'	50°17'27"	43.89'	23.47'
49	S 34°07'08"E	330.16'	200.00'	111°15'28"	388.38'	292.41'
50	S 62°33'04"E	182.82'	200.00'	54°23'33"	189.87'	102.77'
51	S 08°09'32"E	182.82'	200.00'	54°23'33"	189.87'	102.77'
52	S 20°18'25"E	8.63'	200.00'	02°28'20"	8.63'	4.32'
53	S 13°06'28"E	87.68'	300.00'	18°48'18"	87.99'	44.31'

SEE SHEET 6 OF 8