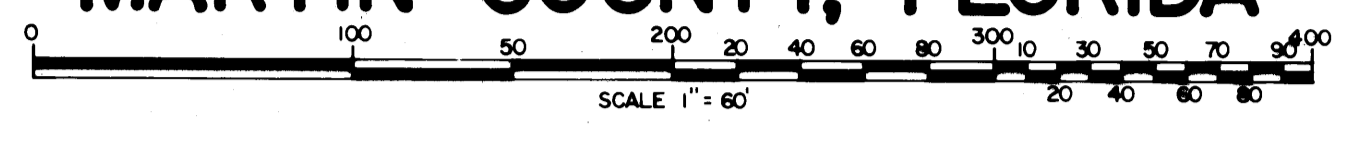


HERITAGE OAKS

A SUBDIVISION IN GOVERNMENT LOTS 2 & 3 IN SECTION 23, TOWNSHIP 40 SOUTH, RANGE 42 EAST, IN
MARTIN COUNTY, FLORIDA

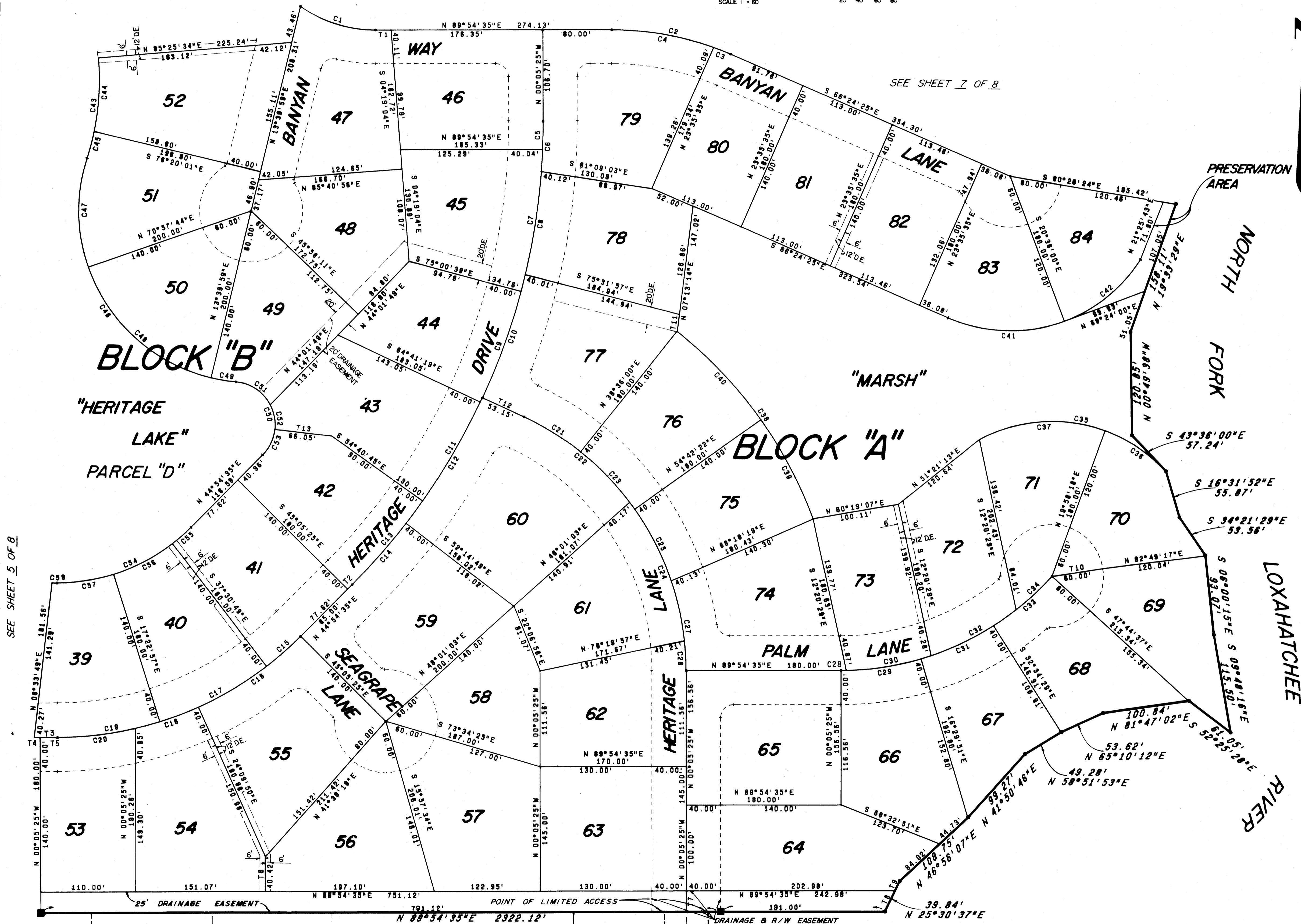
SHEET 6 OF 8 SHEETS

JANUARY 1977



I, LOUISE V. ISAACS,
 CLERK OF THE CIRCUIT COURT
 OF MARTIN COUNTY, FLORIDA
 HEREBY CERTIFY THAT THIS
 PLAT WAS FILED FOR RECORD
 IN PLAT BOOK 7 PAGE
10, MARTIN COUNTY,
 FLORIDA, PUBLIC RECORDS
 THIS DAY OF
 19 .

LOUISE V. ISAACS, CLERK
 CIRCUIT COURT
 MARTIN COUNTY, FLORIDA
 BY:
 DEPUTY CLERK
 FILE NO.



C#	CH	BRG	CHORD	RADIUS	DELTA	ARC	TANGENT
1	S	72°22'50"E	91.26'	150.00'	35°25'10"	92.73'	47.80'
2	S	78°14'55"E	141.03'	343.83'	23°41'00"	142.04'	72.05'
3	S	68°10'43"E	21.25'	343.83'	03°32'38"	21.25'	10.83'
4	S	80°01'13"E	120.17'	343.83'	20°08'24"	120.79'	81.02'
5	N	01°08'33"E	32.89'	782.89'	02°27'58"	32.89'	16.42'
6	N	02°08'11"E	38.38'	782.89'	04°23'12"	38.38'	19.21'
7	N	08°40'58"E	167.58'	782.89'	12°58'47"	167.00'	84.28'
8	N	08°52'52"E	121.93'	782.89'	08°10'11"	122.08'	61.18'
9	N	20°09'01"E	137.22'	782.89'	10°18'20"	137.40'	68.88'
10	N	18°11'18"E	152.08'	782.89'	11°28'37"	152.33'	76.42'
11	N	30°18'59"E	193.07'	782.89'	10°00'34"	193.24'	96.79'
12	N	31°18'39"E	170.80'	782.89'	12°50'38"	170.98'	85.04'
13	N	40°08'55"E	127.48'	782.89'	08°35'20"	127.84'	64.28'
14	N	41°18'53"E	85.21'	782.89'	07°09'24"	85.27'	47.70'
15	N	48°41'53"E	52.88'	400.00'	07°34'38"	52.80'	26.48'
16	N	55°22'22"E	145.28'	400.00'	20°55'35"	146.08'	73.87'
17	N	62°33'07"E	139.82'	400.00'	20°07'52"	140.54'	71.00'
18	N	71°22'17"E	77.17'	400.00'	11°04'13"	77.28'	38.78'
19	N	81°15'48"E	120.28'	400.00'	17°17'32"	120.72'	60.88'
20	N	83°24'30"E	90.58'	400.00'	13°00'10"	90.78'	45.58'
21	S	58°14'43"E	77.85'	325.74'	13°41'25"	77.83'	38.10'
22	S	51°05'35"E	157.58'	325.74'	27°58'40"	158.15'	81.20'
23	S	43°20'48"E	91.27'	325.74'	18°08'22"	91.57'	46.08'
24	S	21°37'43"E	173.74'	325.74'	30°58'04"	175.87'	90.14'
25	S	27°01'58"E	93.81'	325.74'	16°31'20"	93.83'	47.29'
26	S	03°07'33"E	34.50'	325.74'	08°04'18"	34.52'	17.27'
27	S	08°25'52"E	105.74'	325.74'	18°40'54"	106.21'	53.58'
28	N	88°20'48"E	6.50'	330.42'	01°07'38"	6.50'	3.25'
29	N	81°42'22"E	94.28'	330.42'	18°24'28"	94.82'	47.83'
30	N	80°04'18"E	100.09'	330.42'	17°25'22"	100.48'	50.83'
31	N	85°58'22"E	148.81'	330.42'	48°03'53"	151.00'	80.28'
32	N	81°39'08"E	112.58'	330.42'	18°38'54"	113.12'	57.12'
33	N	48°38'37"E	88.47'	330.42'	15°33'47"	88.75'	45.15'
34	N	48°48'12"E	58.82'	330.42'	08°58'57"	58.88'	28.57'
35	S	80°24'28"E	220.08'	180.00'	75°22'18"	238.79'	139.05'
36	S	58°22'30"E	84.88'	180.00'	27°18'25"	85.78'	43.72'
37	N	85°58'22"E	148.81'	180.00'	48°03'53"	151.00'	80.28'
38	S	35°57'47"E	288.23'	505.74'	30°52'28"	272.52'	138.85'
39	S	27°54'38"E	128.89'	505.74'	14°48'04"	130.35'	65.54'
40	S	43°20'48"E	141.70'	505.74'	18°08'22"	142.17'	71.55'
41	S	88°30'13"E	135.42'	180.00'	44°11'35"	138.84'	73.08'
42	N	50°58'08"E	113.72'	180.00'	38°48'43"	115.70'	58.93'
43	N	08°18'08"E	117.88'	300.00'	22°38'37"	118.38'	58.97'
44	N	03°31'58"E	85.93'	300.00'	08°08'18"	86.25'	43.42'
45	N	14°50'11"E	32.13'	300.00'	08°08'18"	32.14'	16.08'
46	S	33°28'18"E	312.51'	200.00'	102°45'18"	328.88'	250.33'
47	N	00°33'58"W	128.73'	200.00'	38°58'38"	128.98'	66.81'
48	S	47°41'08"E	191.77'	200.00'	57°17'45"	200.00'	109.28'
49	S	40°35'28"E	28.70'	200.00'	08°30'55"	28.72'	14.88'
50	S	18°58'11"E	80.54'	50.00'	128°45'31"	80.04'	27.34'
51	S	58°10'41"E	47.88'	50.00'	57°20'00"	50.04'	27.34'
52	S	10°24'48"E	28.38'	50.00'	34°11'15"	28.93'	15.38'
53	N	25°47'42"E	32.75'	50.00'	38°13'48"	33.38'	17.35'
54	N	67°24'35"E	188.38'	220.00'	45°00'00"	172.78'	91.13'
55	N	48°41'53"E	28.07'	220.00'	07°34'38"	28.08'	14.57'
56	N	28°33'07"E	78.80'	220.00'	20°07'52"	77.30'	38.05'
57	N	81°15'48"E	88.15'	220.00'	17°17'32"	88.40'	39.45'
58	S	88°45'48"E	5.80'	50.00'	08°38'14"	5.81'	2.81'

T#	BEARING	DISTANCE
1	N 89°54'35"E	17.78'
2	N 89°54'35"E	7.38'
3	N 89°54'35"E	26.83'
4	N 89°54'35"E	6.83'
5	N 89°54'35"E	20.00'
6	N 00°05'25"W	40.42'
7	N 00°05'25"W	25.00'
8	N 25°30'37"E	27.72'
9	N 25°30'37"E	12.12'
10	N 81°02'44"E	80.00'
11	N 07°13'14"E	20.18'

SEE SHEET 5 OF 8

TURTLE CREEK VILLAGE PB 4, Pg 93
 MARTIN COUNTY, FLORIDA

HUNT CLUB COLONY PB 4, Pg 5
 MARTIN COUNTY, FLORIDA

Lindahl & Browning, Inc.
 Engineers - Planners - Surveyors
 P.O. Box 727, Jupiter, Florida 33408

6 **8**
 SHEET OF SHEETS