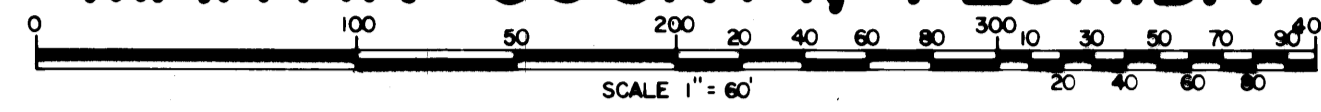


HERITAGE OAKS

A SUBDIVISION IN GOVERNMENT LOTS 2 & 3 IN SECTION 23, TOWNSHIP 40 SOUTH, RANGE 42 EAST, IN
MARTIN COUNTY, FLORIDA

SHEET 5 OF 8 SHEETS

JANUARY 1977

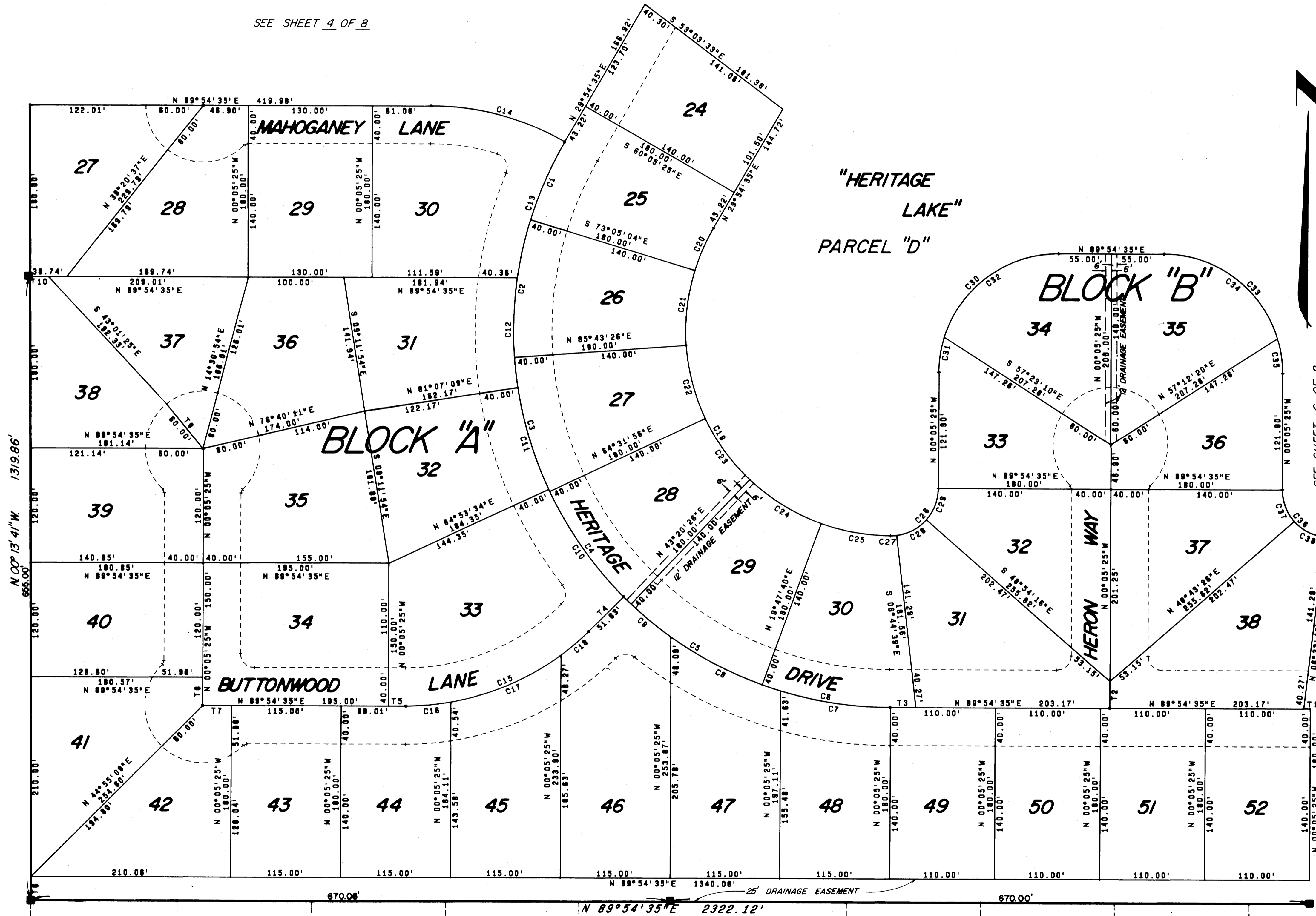


I, LOUISE V. ISAACS,
 CLERK OF THE CIRCUIT COURT
 OF MARTIN COUNTY, FLORIDA,
 HEREBY CERTIFY THAT THIS
 PLAN WAS FILED FOR RECORD
 IN PLAT BOOK 7, PAGE
 10, MARTIN COUNTY,
 FLORIDA, PUBLIC RECORDS
 THIS _____ DAY OF
 _____, 19____.

LOUISE V. ISAACS, CLERK
 CIRCUIT COURT
 MARTIN COUNTY, FLORIDA
 BY: _____
 DEPUTY CLERK
 FILE NO. _____

SEE SHEET 4 OF 8

TURTLE CREEK VILLAGE, PB. 4, Pg. 93
 MARTIN COUNTY, FLORIDA



SEE SHEET 6 OF 8

C	CH	BRC	CHORD	RADIUS	DELTA	ARC	TANGENT
1	N	23°24'45"E	89.39'	395.00'	12°53'39"	89.58'	44.98'
2	N	08°19'11"E	145.27'	395.00'	21°11'30"	146.10'	73.89'
3	S	14°52'19"E	145.27'	395.00'	21°11'30"	146.10'	73.89'
4	S	38°03'49"E	145.27'	395.00'	21°11'30"	146.10'	73.89'
5	S	58°25'57"E	161.19'	395.00'	23°32'46"	162.33'	82.33'
6	S	80°08'52"E	136.40'	395.00'	19°53'05"	137.09'	69.24'
7	S	81°37'38"E	116.27'	395.00'	18°35'34"	116.69'	58.77'
8	S	83°48'19"E	128.24'	395.00'	18°41'05"	128.81'	64.98'
9	S	48°47'05"E	64.68'	395.00'	09°23'21"	64.73'	32.44'
10	S	35°05'55"E	137.07'	395.00'	19°58'59"	137.76'	69.59'
11	S	16°59'39"E	111.49'	395.00'	16°13'35"	111.88'	56.31'
12	N	00°29'01"W	115.37'	395.00'	16°47'40"	115.78'	58.31'
13	N	18°54'42"E	150.71'	395.00'	21°59'48"	151.84'	76.77'
14	S	75°05'25"E	144.89'	278.90'	30°00'00"	148.56'	75.00'
15	S	67°24'55"E	208.93'	270.38'	45°00'00"	212.34'	111.99'
16	N	84°54'19"E	47.17'	270.38'	10°00'31"	47.23'	23.67'
17	N	66°30'03"E	125.31'	270.38'	26°48'02"	126.46'	64.41'
18	N	49°00'19"E	38.62'	270.38'	08°11'27"	38.65'	19.36'
19	S	30°05'25"E	372.39'	215.00'	120°00'00"	450.29'	372.39'
20	N	23°24'45"E	48.66'	215.00'	12°53'39"	48.76'	24.49'
21	N	08°19'11"E	79.07'	215.00'	21°11'30"	79.52'	40.22'
22	S	14°52'19"E	79.07'	215.00'	21°11'30"	79.52'	40.22'
23	S	38°03'49"E	79.07'	215.00'	21°11'30"	79.52'	40.22'
24	S	58°25'57"E	87.74'	215.00'	23°32'46"	88.36'	44.81'
25	S	80°08'52"E	74.24'	215.00'	19°53'05"	74.62'	37.69'
26	N	44°54'35"E	70.71'	50.00'	00°00'00"	78.54'	50.00'
27	N	88°34'59"E	5.80'	50.00'	08°39'14"	6.81'	2.91'
28	N	62°10'33"E	35.97'	50.00'	42°09'37"	36.79'	18.27'
29	N	20°30'10"E	35.17'	50.00'	41°11'09"	35.94'	18.79'
30	N	44°54'35"E	176.78'	125.00'	90°00'00"	196.35'	125.00'
31	N	08°30'52"E	37.40'	125.00'	17°12'34"	37.55'	18.91'
32	S	53°30'52"E	148.34'	125.00'	72°47'26"	158.80'	92.14'
33	S	45°05'25"E	176.78'	125.00'	90°00'00"	196.35'	125.00'
34	S	53°41'42"E	148.34'	125.00'	72°47'26"	158.80'	92.14'
35	S	08°41'42"E	37.40'	125.00'	17°12'34"	37.55'	18.91'
36	S	41°45'48"E	68.49'	50.00'	83°20'48"	72.73'	44.51'
37	S	20°41'00"E	35.17'	50.00'	41°11'09"	35.94'	18.79'
38	S	62°21'23"E	35.97'	50.00'	42°09'37"	36.79'	18.27'

T	BEARING	DISTANCE
1	N 89°54'35"E	6.83'
2	N 00°05'25"W	28.75'
3	N 89°54'35"E	26.83'
4	N 89°54'35"E	51.83'
5	N 89°54'35"E	18.01'
6	N 00°13'41"W	25.00'
7	N 89°54'35"E	30.00'
8	N 00°05'25"W	30.00'
9	S 39°18'29"E	60.00'
10	N 89°54'35"E	19.47'

TURTLE CREEK VILLAGE PB. 4, Pg. 93 MARTIN COUNTY, FLORIDA

Lindahl & Browning, Inc.
 Engineers - Planners - Surveyors
 P.O. Box 727, Jupiter, Florida 33408

5 8
 SHEET OF SHEETS