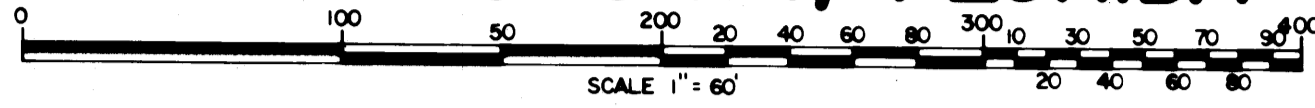


HERITAGE OAKS

A SUBDIVISION IN GOVERNMENT LOTS 2 & 3 IN SECTION 23, TOWNSHIP 40 SOUTH, RANGE 42 EAST, IN
MARTIN COUNTY, FLORIDA

SHEET 4 OF 8 SHEETS

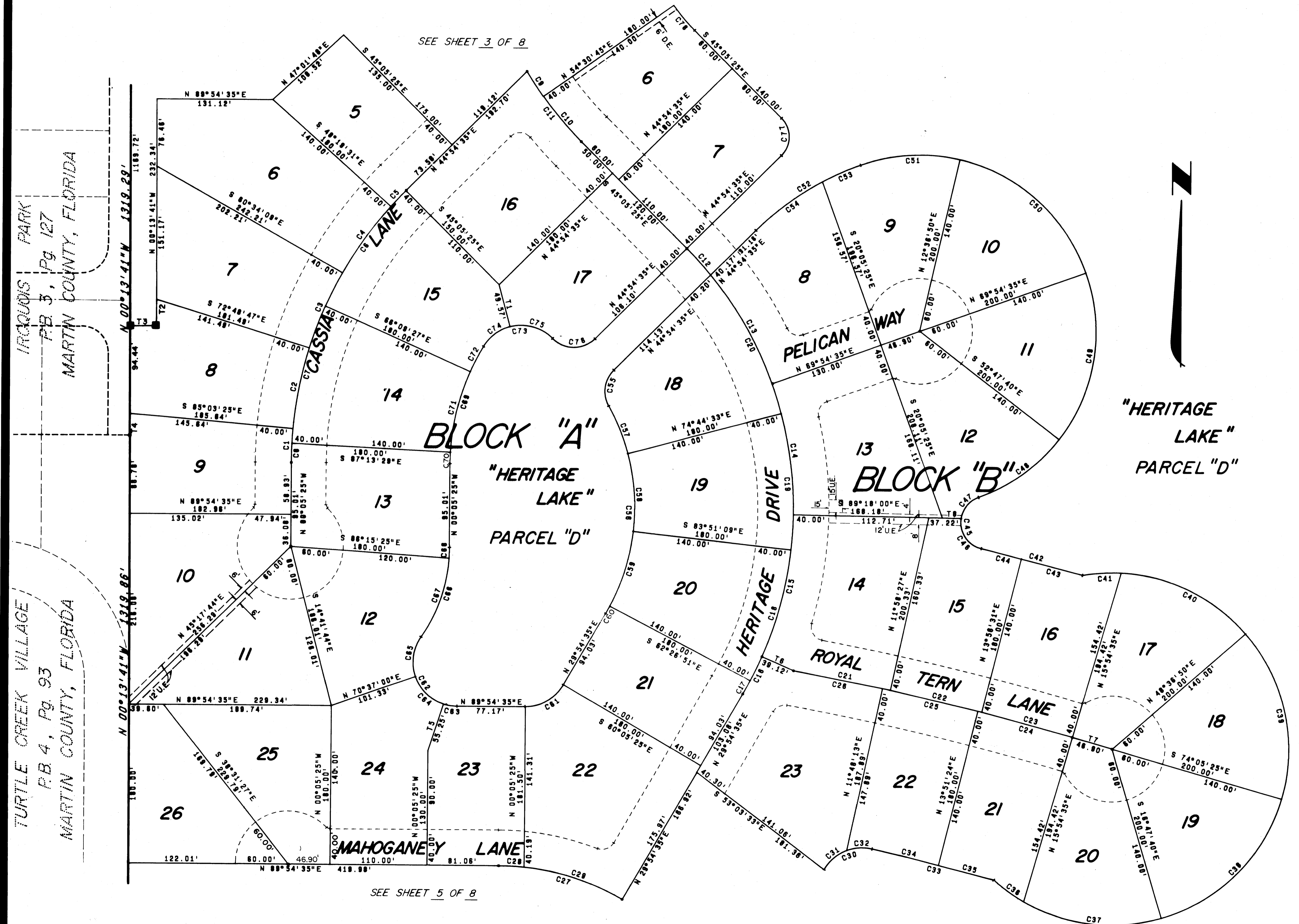
JANUARY 1977



PB 7 R10
 Sheet 4 of 8

I, LOUISE V. ISAACS,
 CLERK OF THE CIRCUIT COURT
 OF MARTIN COUNTY, FLORIDA,
 HEREBY CERTIFY THAT THIS
 PLAN WAS FILED FOR RECORD
 IN PLAT BOOK
10, MARTIN COUNTY
 FLORIDA, PUBLIC RECORDS
 THIS _____ DAY OF _____
 19____.

LOUISE V. ISAACS, CLERK
 CIRCUIT COURT
 MARTIN COUNTY, FLORIDA
 BY: _____
 DEPUTY CLERK
 FILE NO. _____



C#	CH	BRG	CHORD	RADIUS	DELTA	ARC	TANGENT
1	N	02°25'35"E	38.48'	437.95'	05°02'00"	38.47'	19.25'
2	N	11°03'54"E	93.41'	437.95'	12°14'38"	93.58'	48.97'
3	N	23°18'32"E	93.41'	437.95'	12°14'38"	93.58'	48.97'
4	N	35°33'10"E	93.41'	437.95'	12°14'38"	93.58'	48.97'
5	N	43°17'32"E	24.72'	437.95'	03°14'08"	24.73'	12.37'
6	N	34°22'34"E	180.13'	437.95'	21°04'02"	181.03'	81.44'
7	N	13°18'32"E	180.13'	437.95'	21°04'02"	181.03'	81.44'
8	N	01°20'33"E	21.80'	437.95'	02°51'58"	21.80'	10.80'
9	S	33°03'00"E	34.02'	400.00'	04°52'28"	34.03'	17.03'
10	S	40°17'20"E	66.98'	400.00'	08°38'10"	67.04'	33.60'
11	S	37°51'05"E	100.80'	400.00'	14°28'38"	101.07'	50.81'
12	S	42°20'44"E	40.05'	418.13'	05°28'22"	40.08'	20.05'
13	S	28°50'44"E	141.70'	418.13'	18°30'38"	142.38'	71.98'
14	S	08°41'43"E	150.89'	418.13'	02°51'58"	151.72'	78.77'
15	N	12°03'35"E	184.72'	418.13'	22°43'11"	185.80'	84.00'
16	N	28°39'53"E	47.34'	418.13'	08°28'24"	47.38'	23.71'
17	N	28°43'52"E	17.20'	418.13'	02°21'28"	17.20'	8.60'
18	N	18°51'00"E	155.30'	418.13'	21°24'18"	156.21'	78.03'
19	S	04°33'18"E	155.30'	418.13'	21°24'18"	156.21'	78.03'
20	S	27°25'45"E	178.32'	418.13'	24°00'38"	179.40'	85.83'
21	S	78°03'28"E	111.88'	3100.00'	02°03'52"	111.70'	55.85'
22	S	77°02'31"E	108.48'	3100.00'	01°58'04"	108.47'	53.24'
23	S	75°04'27"E	108.48'	3100.00'	01°58'04"	108.47'	53.24'
24	S	75°07'01"E	111.08'	3100.00'	02°03'11"	111.08'	55.55'
25	S	77°10'12"E	111.08'	3100.00'	02°03'11"	111.08'	55.55'
26	S	78°08'38"E	102.48'	3100.00'	01°53'00"	102.47'	51.24'
27	S	75°05'25"E	144.88'	278.80'	02°03'11"	144.88'	75.00'
28	S	07°07'24"E	28.97'	278.80'	05°58'02"	28.98'	14.51'
29	S	72°07'24"E	118.71'	278.80'	24°03'58"	117.57'	59.68'
30	N	68°07'28"E	58.08'	50.00'	72°25'42"	63.21'	38.81'
31	N	48°40'22"E	33.81'	50.00'	38°31'34"	34.48'	17.98'
32	N	85°53'13"E	28.32'	50.00'	35°04'08"	28.71'	14.78'
33	S	78°15'57"E	142.30'	2820.00'	02°47'33"	142.31'	71.17'
34	S	78°54'10"E	77.38'	2820.00'	01°31'07"	77.40'	38.70'
35	S	75°50'23"E	64.81'	2820.00'	01°18'28"	64.82'	32.48'
36	S	54°28'38"E	42.18'	200.00'	12°08'02"	42.24'	21.20'
37	S	83°38'38"E	157.15'	200.00'	48°18'03"	161.50'	85.45'
38	N	44°33'27"E	181.77'	200.00'	57°17'45"	200.00'	108.28'
39	S	13°44'17"E	181.77'	200.00'	57°17'45"	200.00'	108.28'
40	S	84°31'12"E	157.15'	200.00'	48°18'03"	161.50'	85.45'
41	N	88°07'28"E	43.38'	200.00'	12°28'41"	43.44'	21.91'
42	S	75°50'15"E	118.48'	3280.00'	02°04'10"	118.47'	59.24'
43	S	75°25'50"E	71.85'	3280.00'	01°15'18"	71.85'	35.93'
44	S	78°27'55"E	48.81'	3280.00'	00°48'51"	48.81'	23.31'
45	S	03°28'58"E	57.88'	30.20'	148°48'55"	77.38'	101.24'
46	S	34°18'38"E	40.88'	30.20'	85°11'23"	44.80'	27.78'
47	N	38°08'48"E	30.82'	30.20'	81°35'32"	32.48'	18.00'
48	N	53°33'27"E	112.82'	200.00'	38°42'15"	114.18'	58.88'
49	N	08°33'28"E	181.77'	200.00'	57°17'45"	200.00'	108.28'
50	S	48°44'18"E	181.77'	200.00'	57°17'45"	200.00'	108.28'
51	S	88°15'25"E	112.82'	200.00'	35°42'15"	114.18'	58.88'
52	N	57°24'35"E	138.58'	322.45'	25°00'00"	140.88'	71.48'
53	N	65°43'40"E	47.03'	322.45'	08°21'51"	47.07'	23.58'
54	N	53°13'40"E	83.28'	322.45'	18°38'08"	83.82'	47.14'
55	N	07°47'57"E	41.03'	34.00'	74°13'15"	44.04'	25.72'
56	S	00°17'57"W	235.32'	238.13'	58°13'15"	248.13'	135.33'
57	S	25°17'04"E	38.28'	238.13'	14°03'13"	38.41'	20.35'
58	S	04°33'18"E	138.58'	238.13'	21°24'18"	140.88'	71.48'
59	N	18°51'00"E	88.41'	238.13'	21°24'18"	89.88'	45.01'
60	N	28°43'52"E	9.80'	238.13'	02°21'28"	9.80'	4.90'
61	N	58°54'35"E	48.78'	48.78'	60°00'00"	52.13'	28.74'
62	S	27°52'54"E	88.47'	50.00'	124°25'03"	108.57'	94.87'
63	S	81°00'08"E	15.80'	50.00'	18°10'35"	15.88'	8.00'
64	S	45°31'55"E	44.25'	50.00'	52°31'30"	45.84'	24.87'
65	N	07°28'18"E	50.00'	50.00'	58°21'38"	48.87'	25.38'
66	N	17°07'08"E	108.51'	180.00'	34°25'03"	108.19'	58.25'
67	N	18°02'08"E	94.95'	180.00'	30°35'03"	98.08'	48.22'
68	N	01°48'35"E	12.04'	180.00'	03°50'00"	12.04'	6.02'
69	N	15°27'13"E	138.25'	257.85'	31°05'15"	138.88'	71.75'
70	N	01°20'33"E	12.80'	257.85'	02°51'58"	12.80'	6.45'
71	N	13°18'32"E	84.31'	257.85'	21°04'02"	84.85'	47.97'
72	N	27°25'12"E	32.18'	257.85'	07°08'17"	32.21'	16.18'
73	N	82°57'13"E	78.75'	50.00'	103°54'45"	80.88'	63.80'
74	N	53°01'33"E	37.51'	50.00'	44°03'25"	38.45'	20.23'
75	S	75°01'05"E	48.88'	50.00'	58°51'20"	52.23'	28.78'
76	N	88°54'35"E	47.84'	33.80'	80°00'00"	53.25'	33.80'
77	N	88°54'35"E	42.43'	30.00'	80°00'00"	47.12'	30.00'
78	S	40°17'20"E	38.83'	220.00'	08°38'10"	38.87'	19.48'

T#	BEARING	DISTANCE
1	S 14°58'45"E	48.57'
2	N 00°13'41"W	34.97'
3	S 88°48'22"E	30.00'
4	N 00°13'41"W	24.87'
5	S 88°54'48"E	55.25'
6	S 88°54'48"E	58.13'
7	S 74°05'25"E	48.80'
8	S 88°18'00"E	21.78'