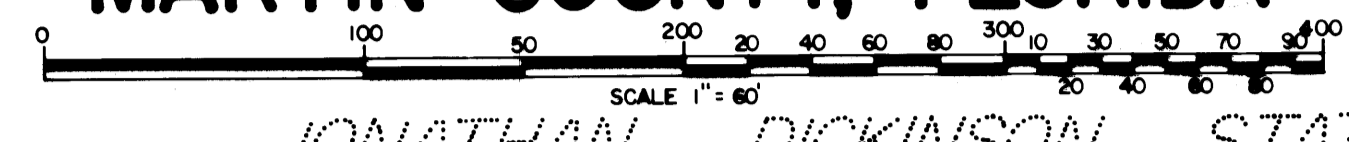


# HERITAGE OAKS

A SUBDIVISION IN GOVERNMENT LOTS 2 & 3 IN SECTION 23, TOWNSHIP 40 SOUTH, RANGE 42 EAST, IN  
**MARTIN COUNTY, FLORIDA**

SHEET 3 OF 8 SHEETS

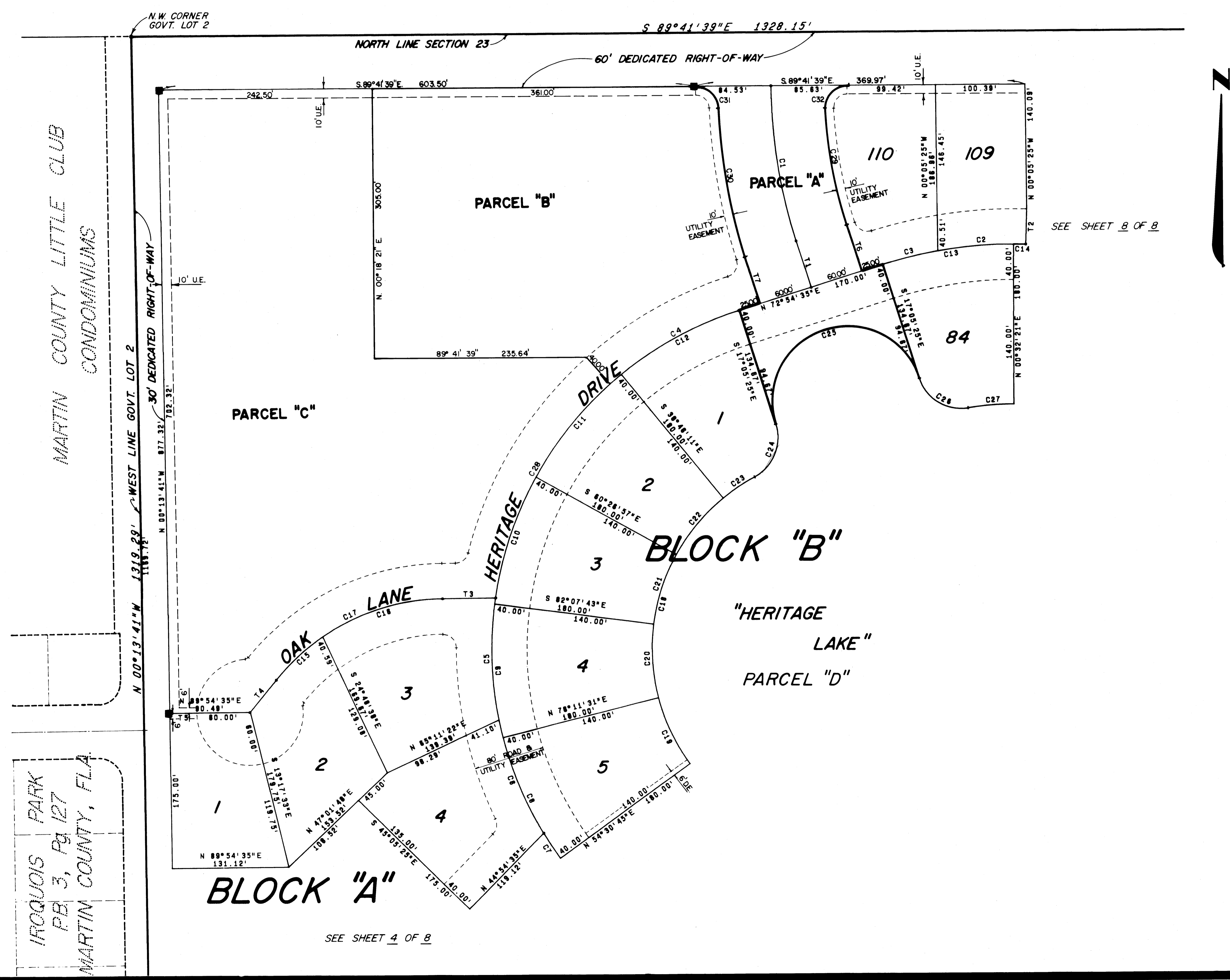
JANUARY 1977



JONATHAN DICKINSON STATE PARK

I, LOUISE V. ISAACS,  
 CLERK OF THE CIRCUIT COURT  
 OF MARTIN COUNTY, FLORIDA,  
 HEREBY CERTIFY THAT THIS  
 PLAT WAS FILED FOR RECORD  
 IN PLAT BOOK 7, PAGE  
 10, MARTIN COUNTY,  
 FLORIDA, PUBLIC RECORDS  
 THIS DAY OF  
 \_\_\_\_\_, 19\_\_\_\_.

LOUISE V. ISAACS, CLERK  
 CIRCUIT COURT  
 MARTIN COUNTY, FLORIDA  
 BY: \_\_\_\_\_  
 DEPUTY CLERK  
 FILE NO. \_\_\_\_\_



SEE SHEET 8 OF 8

C#	CH BRG	CHORD	RADIUS	DELTA	ARC	TANGENT
1	S 08°23'32"E	176.95'	585.06'	17°23'46"	177.64'	89.51'
2	N 86°18'48"E	99.01'	485.00'	11°43'01"	99.18'	49.76'
3	N 76°40'56"E	63.82'	485.00'	07°32'42"	63.87'	31.98'
4	N 61°43'36"E	167.06'	400.00'	24°06'28"	168.30'	85.42'
5	N 01°00'17"W	136.89'	400.00'	19°42'19"	137.57'	69.47'
6	S 20°44'07"E	137.24'	400.00'	19°45'19"	137.92'	69.65'
7	S 33°03'00"E	34.02'	400.00'	04°52'29"	34.03'	17.03'
8	S 24°38'52"E	150.45'	400.00'	21°40'46"	151.35'	76.59'
9	N 02°58'06"W	150.45'	400.00'	21°40'46"	151.35'	76.59'
10	N 18°42'40"E	150.45'	400.00'	21°40'46"	151.35'	76.59'
11	N 40°23'26"E	150.45'	400.00'	21°40'46"	151.35'	76.59'
12	N 62°04'12"E	150.45'	400.00'	21°40'46"	151.35'	76.59'
13	N 81°43'28"E	148.64'	485.00'	17°37'46"	149.23'	75.21'
14	S 88°38'41"E	13.82'	485.00'	01°37'57"	13.82'	6.91'
15	N 47°53'13"E	70.91'	244.47'	16°40'41"	71.16'	35.83'
16	N 73°04'04"E	141.66'	244.47'	33°41'01"	143.72'	74.00'
17	N 64°43'44"E	208.03'	244.47'	50°21'42"	214.88'	114.94'
18	N 13°22'31"E	331.38'	220.00'	97°43'31"	375.24'	251.86'
19	S 24°38'52"E	82.75'	220.00'	21°40'46"	83.24'	42.13'
20	N 02°58'06"W	82.75'	220.00'	21°40'46"	83.24'	42.13'
21	N 18°42'40"E	82.75'	220.00'	21°40'46"	83.24'	42.13'
22	N 40°23'26"E	82.75'	220.00'	21°40'46"	83.24'	42.13'
23	N 56°44'03"E	42.20'	220.00'	11°00'27"	42.27'	21.20'
24	N 22°34'26"E	63.83'	50.00'	79°19'41"	69.23'	41.46'
25	N 72°54'35"E	170.00'	85.00'	180°00'00"	267.04'	.00'
26	S 58°08'00"E	63.95'	48.70'	82°05'10"	69.77'	42.40'
27	N 85°40'53"E	51.66'	305.00'	09°42'56"	51.72'	25.92'
28	N 28°49'30"E	273.32'	400.00'	39°57'15"	278.94'	145.41'
29	N 9°49'30"W	132.80'	525.06'	14°31'50"	133.16'	66.94'
30	N 9°27'41"W	171.27'	645.06'	15°15'28"	171.78'	86.40'
31	S 45°45'48"E	34.69'	25.00'	87°51'42"	38.34'	24.08'
32	N 43°52'23"E	36.23'	25.00'	92°51'56"	40.52'	26.28'

T#	BEARING	DISTANCE
1	S 17°05'25"E	55.00'
2	N 02°10'18"E	40.00'
3	N 89°54'35"E	59.80'
4	N 39°32'53"E	46.90'
5	N 89°54'35"E	30.49'
6	S 17°05'25"E	55.00'
7	S 17°05'25"E	55.00'

MARTIN COUNTY LITTLE CLUB  
 CONDOMINIUMS

IROQUOIS PARK  
 PB 3, PG 127  
 MARTIN COUNTY, FLA

SEE SHEET 4 OF 8