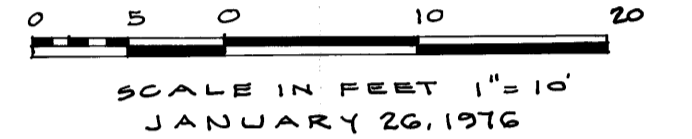
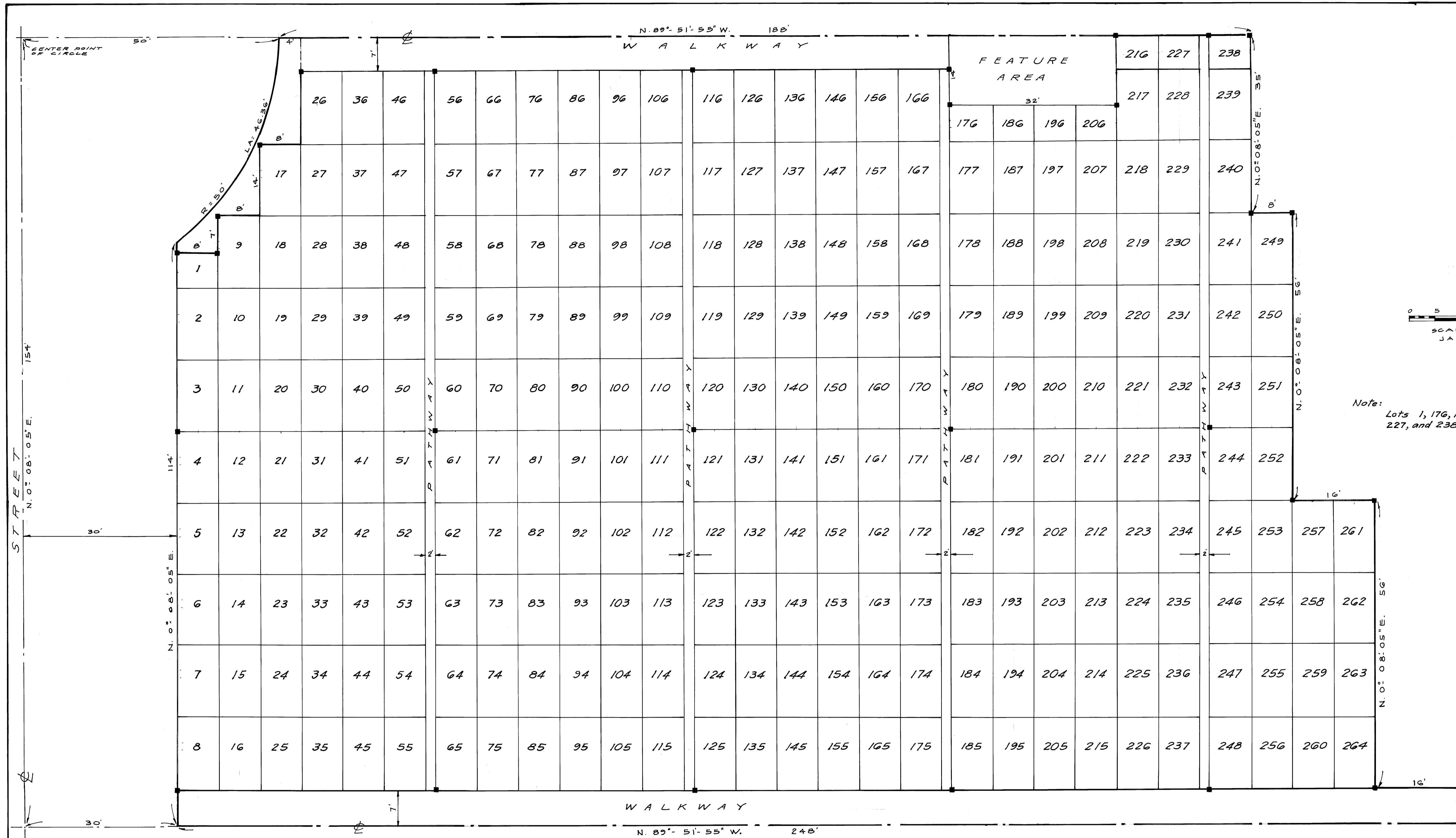


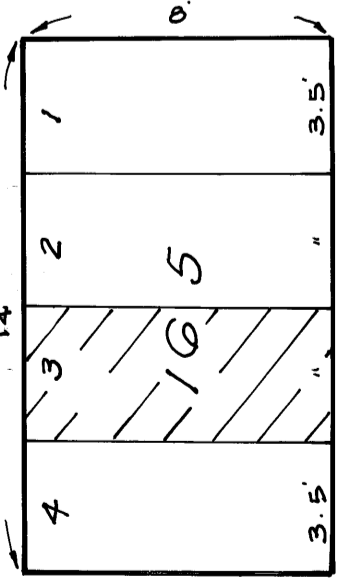
PB 7-6



Note:
 Lots 1, 176, 186, 196, 206, 216,
 227, and 238 contain two spaces.

TYPICAL DESCRIPTION

Space No. 3, Lot 165,
 Veteran's Section



TYPICAL LOT
 SCALE: 1" = 5'

FOREST HILLS MEMORIAL PARK - PHASE ONE

VETERAN'S SECTION

LOCATED IN THE NORTHWEST ONE QUARTER OF THE NORTHWEST ONE QUARTER
 OF SECTION 7 TOWNSHIP 38 SOUTH, RANGE 41 EAST, MARTIN COUNTY, FLORIDA