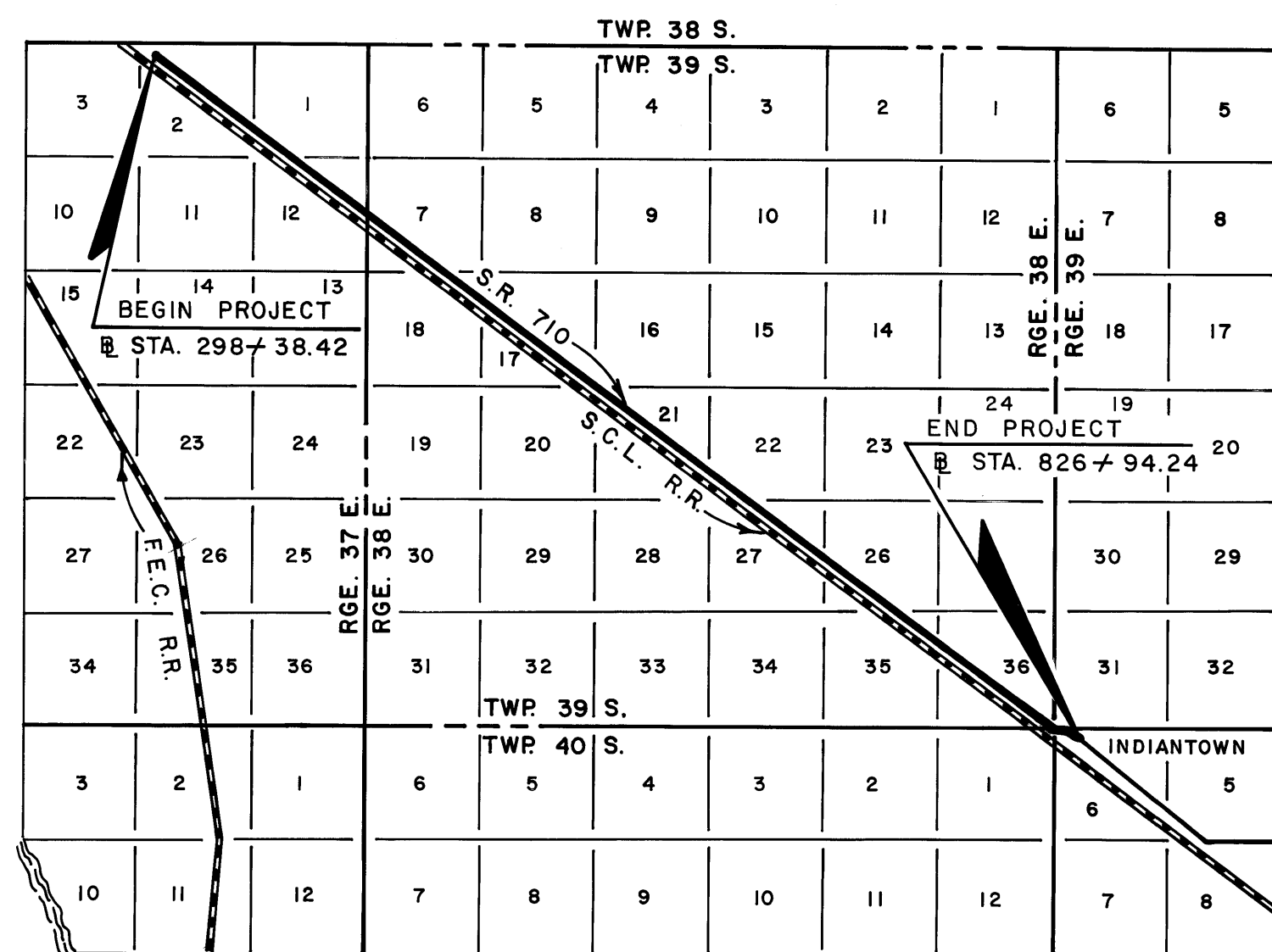


FED. ROAD DIV. No.	STATE	F A PROJECT NO.	FISCAL YEAR	SHEET NO.
3	FLA.			

File No. 253541

PB 7-4



LOCATION SKETCH
"NOT TO SCALE"

THIS IS TO CERTIFY THAT THE WITHIN AND ATTACHED SHEETS NUMBERED ONE (1) TO TEN (10) INCLUSIVE, CONSTITUTE A TRUE COPY OF THE OFFICIAL RIGHT OF WAY MAP SHOWING LOCATION AND SURVEY BY THE STATE OF FLORIDA DEPARTMENT OF TRANSPORTATION FOR A PORTION OF STATE ROAD 710, DESIGNATED AS SECTION 89070 IN MARTIN COUNTY, FLORIDA.

THE PROPERTY OUTLINED IN RED INK, AND LABELED MAINT. R/W LINE ON THE SAID SHEETS HAS BEEN VESTED IN THE STATE OF FLORIDA DEPARTMENT OF TRANSPORTATION, PURSUANT TO THE PROVISIONS OF SECTION 341.59 FLORIDA STATUTES OF 1951, SECTION 337.31 FLORIDA STATUTES OF 1955 AND SECTION 95.361 FLORIDA STATUTES OF 1974, AND/OR UNDER FORMAL CONVEYANCE AND OTHER INSTRUMENTS.

IN WITNESS WHEREOF, WE HAVE HEREUNTO SET OUR HANDS AND AFFIXED THE SEAL OF THE STATE OF FLORIDA DEPARTMENT OF TRANSPORTATION AT TALLAHASSEE, FLORIDA, THIS 12th DAY OF August, A.D. 1976

Tom Wolff
SECRETARY OF TRANSPORTATION,
STATE OF FLORIDA DEPARTMENT
OF TRANSPORTATION

Carol Scavali
EXECUTIVE SECRETARY, STATE OF
FLORIDA DEPARTMENT OF TRANSPORTATION

THIS IS TO CERTIFY THAT THE RIGHT OF WAY LIMITS AS SHOWN ON THIS MAP HAVE BEEN MAINTAINED CONTINUOUSLY FOR FOUR (4) YEARS IMMEDIATELY PAST WITHOUT INTERRUPTION OR DISTURBANCE BETWEEN MILE POSTS 5.100 AND 5.110, (S.L.D.)

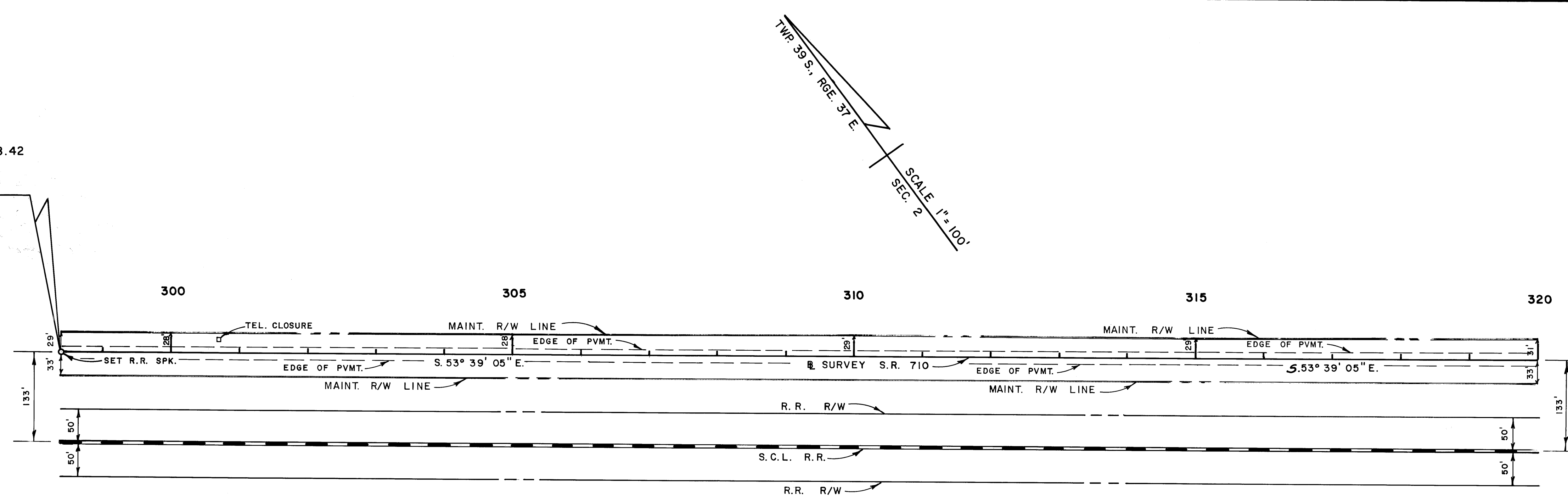
J. B. Phayton
MAINTENANCE ENGINEER

ACCEPTED FOR FILES AND RECORDED IN THE PUBLIC RECORDS OF MARTIN COUNTY, FLORIDA, THIS 23rd DAY OF August, A.D. 1976 IN RIGHT OF WAY PLAT BOOK 7 PAGE 4

Louise V. Isaacs *By: Gwen Henry, D.C.*
CLERK OF CIRCUIT COURT OF MARTIN
COUNTY FLORIDA

1976 AUG 23 11 05 AM
 COUNTY CLERK
 MARTIN COUNTY
 FLORIDA

BEGIN PROJECT @ STA. 298+38.42
S. R. 710 89070-2515
BEARING S. 53° 39' 05" E. AHD. =
BEARING S. 53° 39' 21" E. BK.
S. R. 710 89070-2508



STATE OF FLORIDA DEPARTMENT OF TRANSPORTATION			
MAINTENANCE MAP			
STATE ROAD NO.	710	MARTIN	COUNTY
BY	DATE	APPROVED BY	DATE
DRAWN	STOUT APR. 76	<i>William F. Smith</i>	
TRACED	STOUT JUL. 76		
CHECKED		<i>W.E. Wolff</i>	8-10-76
COMPARED			
INDEXED			
REVISION	BY	DATE	
SECTION 89070-2515		SHEET 1 OF 10	

B.I. NO. 416146