

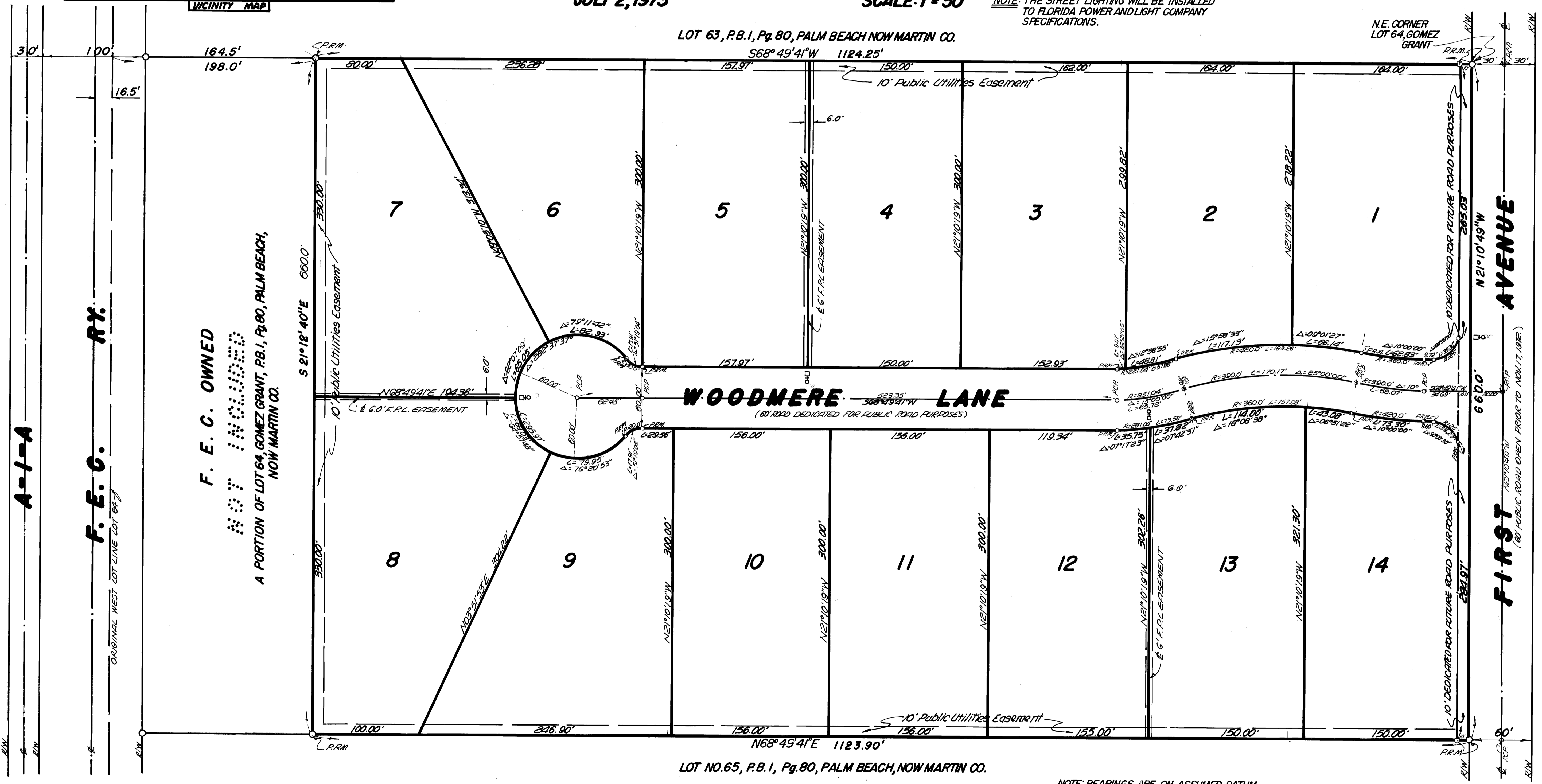
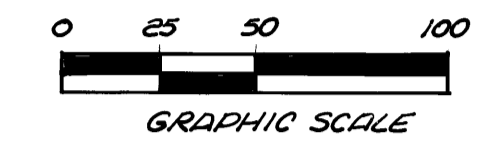
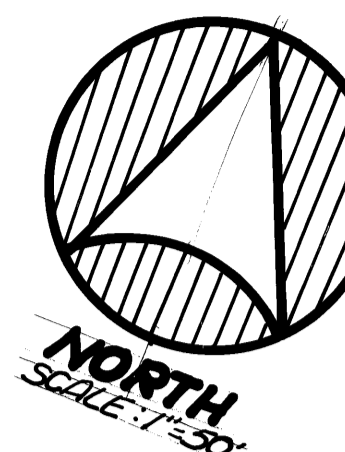
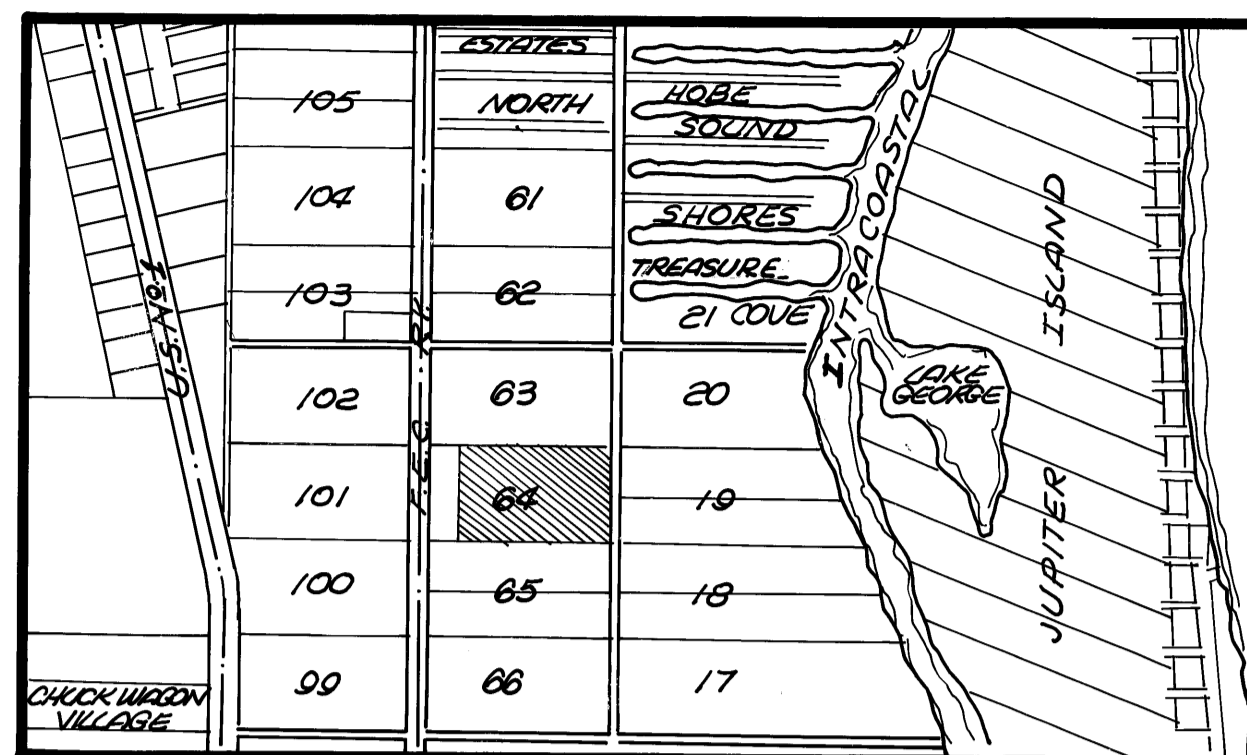
# PLAT OF WOODMERE ACRES

A SUBDIVISION OF  
LOT 64 LESS THE WEST THREE ACRES, OF  
GOMEZ GRANT, WEST OF THE INDIAN RIVER,  
PLAT BOOK 1, PAGE 80, PUBLIC RECORDS  
OF PALM BEACH, NOW MARTIN COUNTY,  
FLORIDA.

JULY 2, 1973

SCALE: 1 = 50'

NOTE: THE STREET LIGHTING WILL BE INSTALLED  
TO FLORIDA POWER AND LIGHT COMPANY  
SPECIFICATIONS.



LOT 63, P.B. 1, Pg. 80, PALM BEACH NOW MARTIN CO.  
S68° 49' 41" W 1124.25'

LOT NO. 65, P.B. 1, Pg. 80, PALM BEACH, NOW MARTIN CO.  
N68° 49' 41" E 1123.90'

NOTE: BEARINGS ARE ON ASSUMED DATUM  
FOR CALCULATION PURPOSES.

SHEET 2 OF 2

**CREECH & ASSOC.**  
SURVEYORS AND ENGINEERS  
STUART FLORIDA