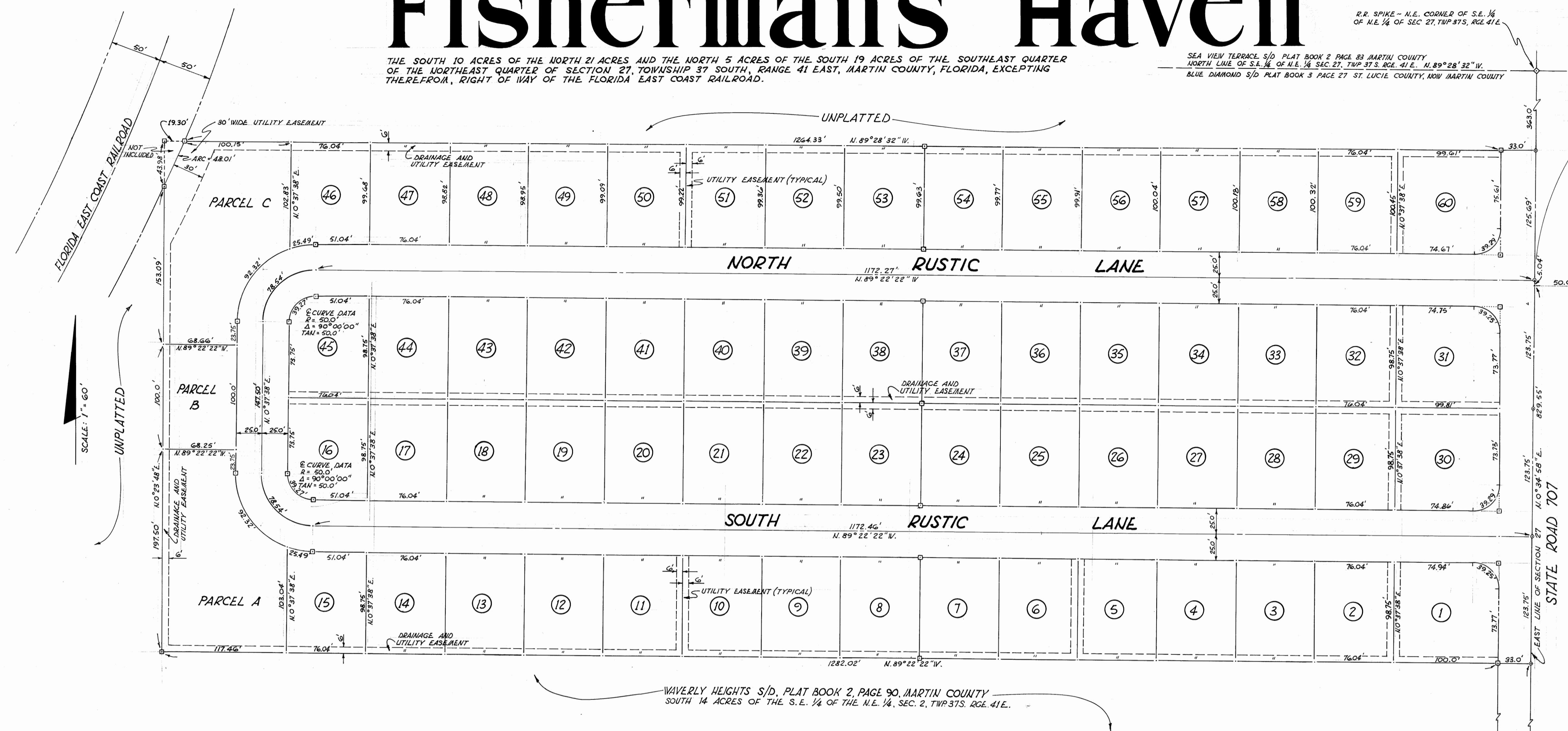


Fisherman's Haven

THE SOUTH 10 ACRES OF THE NORTH 21 ACRES AND THE NORTH 5 ACRES OF THE SOUTH 19 ACRES OF THE SOUTHEAST QUARTER OF THE NORTHEAST QUARTER OF SECTION 27, TOWNSHIP 37 SOUTH, RANGE 41 EAST, MARTIN COUNTY, FLORIDA, EXCEPTING THEREFROM, RIGHT OF WAY OF THE FLORIDA EAST COAST RAILROAD.

SEA VIEW TERRACE S/D PLAT BOOK 2 PAGE 83 MARTIN COUNTY
NORTH LINE OF S.E. 1/4 OF N.E. 1/4 SEC. 27, TWP. 37 S. RGE. 41 E. N. 89° 28' 32" W.
BLUE DIAMOND S/D PLAT BOOK 3 PAGE 27 ST. LUCIE COUNTY, NOW MARTIN COUNTY

STATE OF FLORIDA
COUNTY OF MARTIN
I, Dorothy Pierce, County Clerk,
Martin County, Florida, hereby certify
that this plat has been examined
and that it complies in form with all the
requirements of the Statutes of Florida
pertaining to maps and plats, and that
this plat has been filed for record in
Plat Book 4, Page 100, Public
Records of Martin County, Florida,
This 1 day of December, A.D. 1970.
Dorothy Pierce
Clerk of Circuit Court
By [Signature]



SURVEYOR'S CERTIFICATE

I, the undersigned Registered Land Surveyor, hereby certify that on NOV 23, 1970, this property was surveyed and this plat is a true representation of the lands described and shown, to the best of my knowledge and belief, and that permanent reference monuments have been placed as required by the Statutes of the State of Florida thereunto pertaining.

D. P. DeBerry
D. P. DeBerry
Registered Land Surveyor
Florida Certificate No. 1446

Subscribed and sworn to before me this 1 day of DEC, 1970, at Stuart, Martin Co., Florida.

James R. Bentel
Notary Public, State of Florida at Large
My Commission Expires OCT 27, 1971

CERTIFICATE OF OWNERSHIP AND DEDICATION

STATE OF FLORIDA } S.S.
COUNTY OF MARTIN }

Know all men by these presents that James F. Littman, Trustee, has caused the attached plat to be made and the lands to be subdivided as shown and does hereby dedicate and set apart all of the streets, thoroughfares, parks, and other open spaces, drainage and other easements shown on this plat to the use of the general public forever.

In Witness Whereof, I have hereunto set my hand and seal this 23rd day of November, A.D. 1970.

Randall Hancock
Witness
Ronald L. Shelton
Witness

James F. Littman
James F. Littman - Trustee and Individually
Evangelina J. Littman
Evangelina J. Littman

STATE OF FLORIDA } S.S.
COUNTY OF MARTIN }

Before me the undersigned Notary Public, personally appeared, James F. Littman, Trustee to me known to be the individual described in and who executed the foregoing certificate of dedication, and he duly acknowledges before me that he executed the same.

Witness my hand and official seal at Martin County, Florida, this 23rd day of November, A.D. 1970.

Randall Hancock
Notary Public, State of Florida at Large
My Commission Expires: May 4, 1974

CERTIFICATE OF APPROVAL OF COUNTY COMMISSION

STATE OF FLORIDA } S.S.
COUNTY OF MARTIN }

It is hereby certified that this plat has been officially approved for record by the Board of County Commissioners of the County of Martin, Florida, this 24 day of November, A.D. 1970.

APPROVED: [Signature]
County Engineer
[Signature]
Chairman Planning and Zoning Commission
[Signature]
Chairman Board of County Commissioners

SURVEYOR'S NOTES:
ALL CORNER LOT RADII ARE 25'
ALL UTILITY EASEMENTS BETWEEN LOTS ARE SIMILAR TO THOSE DIMENSIONED

PERMANENT REFERENCE MONUMENT LEGEND
○ - INDICATES SURVEYOR'S "PK" NAIL AND TAB
□ - INDICATES CONC. MONUMENT
◇ - INDICATES RAILROAD SPIKE

FILED FOR RECORD
70 DEC 1 1970
DOROTHY PIERCE
CLERK OF CIRCUIT COURT
D.C.