

149943

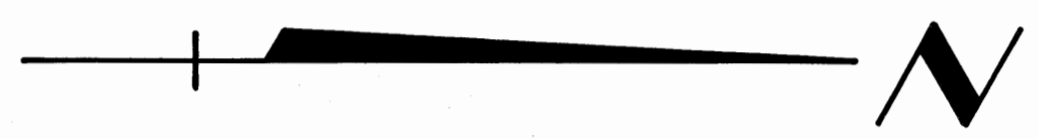
FILED FOR RECORD
7:10 AM
JUL 10 1970
CLERK OF COUNTY COURT
PALM BEACH, FLA.

1ST REPLAT OF A PORTION OF FIRST ADDITION TO PORT MAYACA CEMETERY

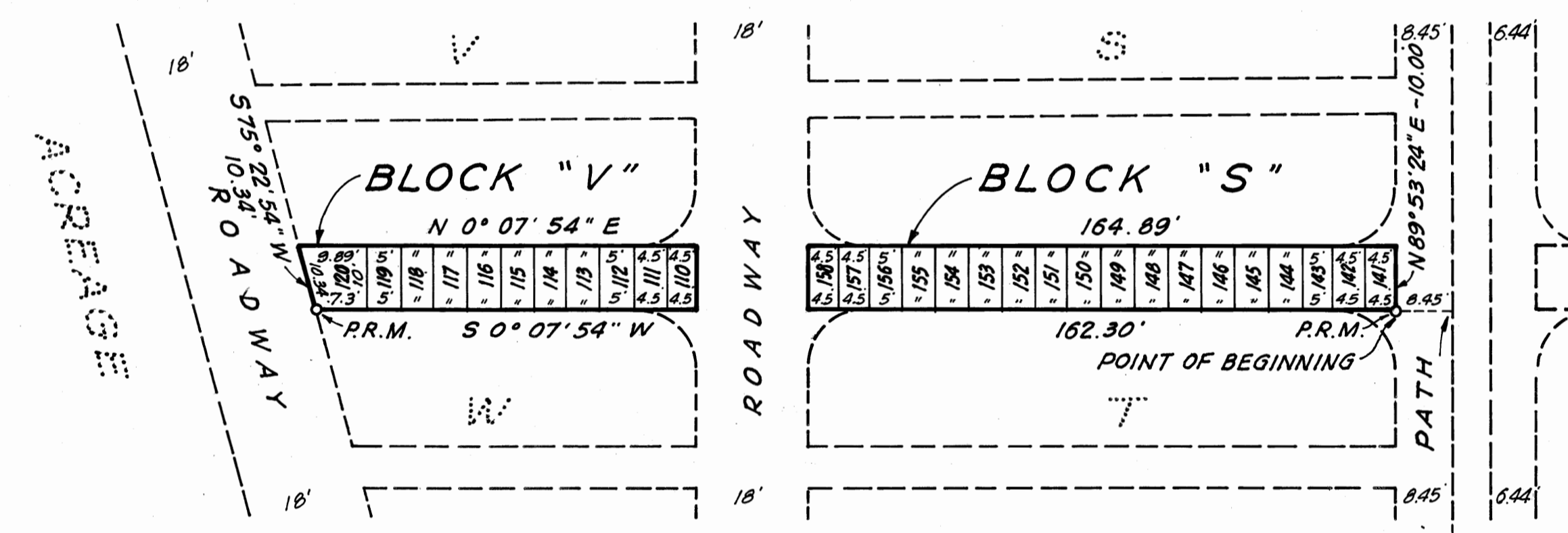
AS RECORDED IN PLAT BOOK 3, PAGE 137, MARTIN COUNTY, FLORIDA
IN SECTION 13, TOWNSHIP 40 SOUTH, RANGE 37 EAST, MARTIN COUNTY, FLORIDA

MOCK, ROOS & SEARCY, INC.
CONSULTING ENGINEERS
WEST PALM BEACH, FLORIDA
SCALE: 1" = 20'
MAY 1970

PLAT BOOK 4
PAGE 98



FIRST ADDITION TO PORT MAYACA
CEMETERY, - P.B. 3, PAGE 137



DEDICATION

STATE OF FLORIDA
COUNTY OF PALM BEACH SS

KNOW ALL MEN BY THESE PRESENTS, that the Board of Trustees of the Port Mayaca Cemetery, the owner in fee simple of that tract of land lying and being in Martin County, Florida, shown on the attached Plat as the 1ST REPLAT OF A PORTION OF FIRST ADDITION TO PORT MAYACA CEMETERY, And more particularly described as follows:

COMMENCING At the Northeast Corner of Section 13, Township 40 South, Range 37 East, Martin County, Florida; thence S 0° 09' 54" W, along the East line of said Section 13, a distance of 2656.35 feet to the East Quarter Corner of said Section 13; thence S 89° 53' 24" W, along the Centerline of said Section 13, a distance of 331.00 feet to a Point; thence S 0° 07' 54" W a distance of 8.45 feet to the Point of Beginning; thence continue S 0° 07' 54" W a distance of 162.30 feet to a point; thence S 75° 22' 54" W a distance of 10.34 feet to a point; thence N 0° 07' 54" E a distance of 164.89 feet to a point; thence N 89° 53' 24" E a distance of 10.00 feet to the Point of Beginning.

has caused the same to be surveyed and platted as shown hereon, and does hereby dedicate to the perpetual use of the public all the roadways and paths as shown hereon.

IN WITNESS WHEREOF: It has caused these presents to be signed by the Chairman of the Board of Trustees and attested by its Secretary and its Seal to be affixed this 24th day of July, A.D., 1970.

BY: Henry Elfers
HENRY ELFERS, Chairman

ATTEST: Annie L. Cooper
ANNIE L. COOPER, Secretary

ACKNOWLEDGMENT

STATE OF FLORIDA
COUNTY OF PALM BEACH SS

I HEREBY CERTIFY that on this day personally appeared before me, an officer duly authorized to administer oaths and take acknowledgements, HENRY ELFERS and ANNIE L. COOPER, chairman and secretary, respectively of the Board of Trustees of the Port Mayaca Cemetery, to me well known to be the persons described herein and who executed the foregoing dedication and they acknowledged before me that they executed the same as such officers of said Board of Trustees by and with the authority of the Board of Trustees for the purposes therein expressed, and that their act and deed was the act and deed of said Board of Trustees.

WITNESS my hand and official seal at Pahokee County of Palm Beach and State of Florida, this 24th day of July, A.D., 1970.

Daphne M. Dixon
Notary Public

My Commission Expires November 9, 1973
Notary Public, State of Florida at Large
My Commission Expires Nov. 9, 1973

CERTIFICATION

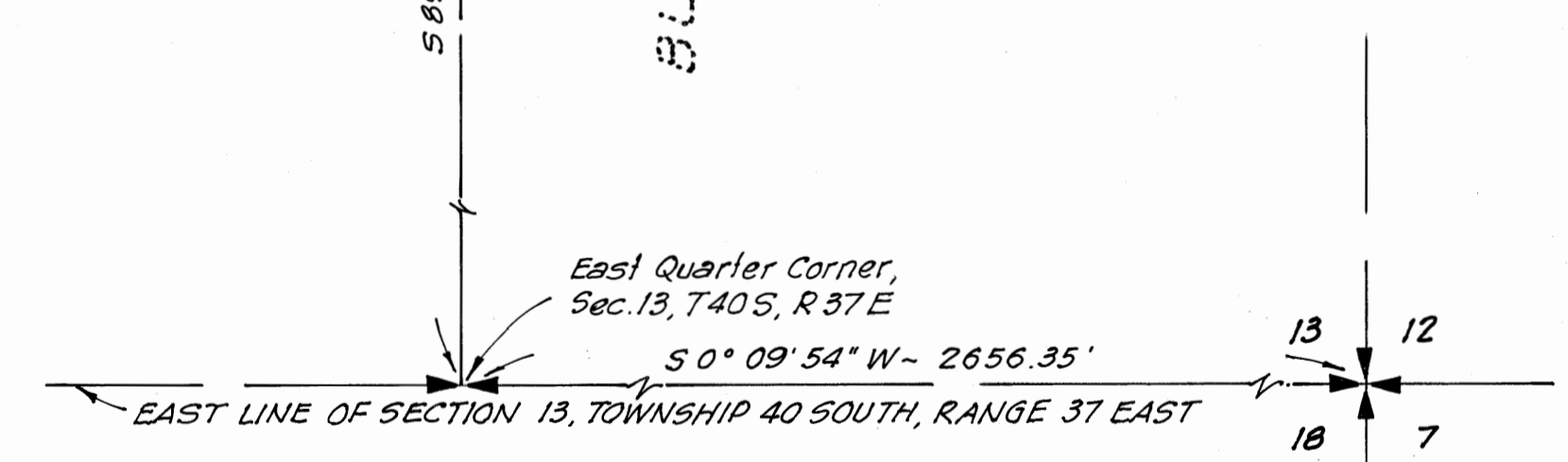
I HEREBY CERTIFY that the plat shown hereon is a true and accurate representation of a Survey made under my direction, of the foregoing described property, and that said survey is accurate to the best of my knowledge and belief, and that Permanent Reference Monuments (P.R.M.'s) have been placed as required by law.

Richard S. Wheelihan
Registered Land Surveyor
Florida Certificate No. 1419

Subscribed and sworn to before me this 11th day of June, A.D., 1970

Lizzie B. Allison
Notary Public

My commission expires December 26, 1972.



CERTIFICATE OF APPROVAL
OF COUNTY COMMISSION
STATE OF FLORIDA } S.S.
COUNTY OF MARTIN }

It is here by certified that this plat has been officially approved for record by the Board of County Commissioners of the County of Martin, Florida, this 25 day of August, A.D. 1970.

APPROVED: D. J. Skidmore
County Engineer
W. C. Stewart
Chairman Planning & Zoning Commission
William S. Quinn
Chairman Board of County Commissioners

This Instrument Was Prepared By
RICHARD S. WHEELIHAN, Vice President,
MOCK, ROOS & SEARCY, INC.
Consulting Engineers
2930 Okeechobee Boulevard
WEST PALM BEACH, FLORIDA