

Fisherman's Hideaway

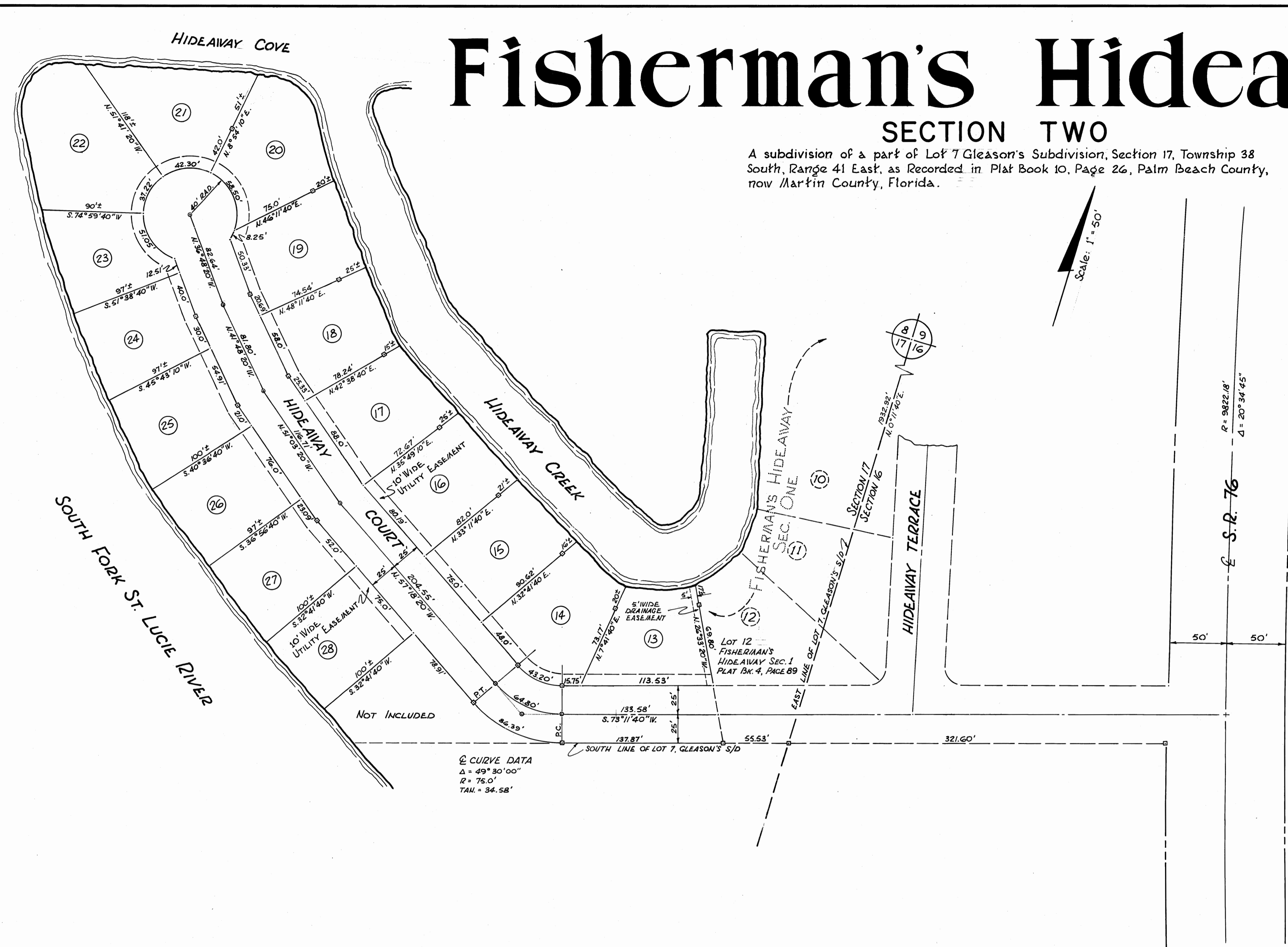
SECTION TWO

A subdivision of a part of Lot 7 Gleason's Subdivision, Section 17, Township 38 South, Range 41 East, as Recorded in Plat Book 10, Page 26, Palm Beach County, now Martin County, Florida.

STATE OF FLORIDA
 COUNTY OF MARTIN

I, Dorothy Pierce, County Clerk, Martin County, Florida, hereby certify that this plat has been examined and that it complies in form with all the requirements of the Statutes of Florida pertaining to maps and plats, and that this plat has been filed for record in Plat Book 4, Page 92, Public Records of Martin County, Florida, This 14th day of APRIL, A.D. 1970.

Dorothy Pierce
 Clerk of Circuit Court
 By _____



CERTIFICATE OF OWNERSHIP AND DEDICATION

STATE OF FLORIDA }
 COUNTY OF MARTIN }

Deaco Inc., a Florida Corporation, by its duly elected President, William R. Dean and by its duly elected Secretary, William T. Ingram acting by and with authority of its Board of Directors, certify ownership by said Corporation of the property described herein, and does hereby dedicate and set apart all of the streets, thoroughfares, parks, and other open spaces, canals and drainage or other easements shown on this plat to the use of the general public forever.

In Witness Whereof, the undersigned Corporation has caused these presents to be executed by its President and attested by its Secretary:

ATTEST: Ronald L. Shelton By William R. Dean
 Witness Jackson L. Smith President
William T. Ingram
 Secretary

STATE OF FLORIDA } S.S.
 COUNTY OF MARTIN }

Before me, the undersigned Notary Public, personally appeared William R. Dean, President, and William T. Ingram, Secretary of Deaco, Inc., a Florida Corporation to me known to be the individuals described in and who executed the foregoing certificate of dedication, and they duly acknowledge before me that they executed the same, as such officers for and in behalf of said Corporation.

Witness, my hand and official seal at Martin County, Florida, this 10th day of APRIL, A.D. 1970.

Mary H. Shimmon
 Notary Public, State of Florida at Large
 My Commission expires: Dec. 31, 1973

CONSENT OF MORTGAGE

STATE OF FLORIDA } S.S.
 COUNTY OF MARTIN }

The undersigned Mortgagees hereby join and consent to the areas dedicated hereon which they might claim under the mortgage held by them on said property:

Philip O. Vary and Marion C. Vary
 Mortgagees

In Witness Whereof, we have hereunto set our hands and seals this 3rd day of APRIL, 1970.

Witnesses: Ronald L. Shelton Seal
Philip O. Vary Seal
Marion C. Vary Seal

STATE OF FLORIDA } S.S.
 COUNTY OF MARTIN }

Before me, the undersigned Notary Public, personally appeared Philip O. Vary and Marion C. Vary husband and wife, to me known to be the individuals described in and who executed the foregoing certificate of dedication, and they each duly acknowledge before me that they executed the same.

Witness my hand and official seal at Martin County, Florida, this 3rd day of APRIL, 1970.

Mary H. Shimmon
 Notary Public, State of Florida at Large
 My Commission Expires: Feb. 5, 1972

SURVEYOR'S CERTIFICATE

I, the undersigned Registered Land Surveyor, hereby certify that on APRIL 7, 1970, this property was surveyed and this plat is a true representation of the lands described and shown, to the best of my knowledge and belief, and that permanent reference monuments have been placed as required by the Statutes of the State of Florida thereunto appertaining.

D. P. DeBerry
 Registered Land Surveyor
 Florida Certificate No. 1446

Subscribed and sworn to before me this 7 day of April, 1970, at Stuart, Martin County, Florida.

Jean P. Bentel
 Notary Public, State of Florida at Large
 My Commission Expires Oct 27, 1971

CERTIFICATE OF APPROVAL OF COUNTY COMMISSION

STATE OF FLORIDA } S.S.
 COUNTY OF MARTIN }

It is hereby certified that this plat has been officially approved for record by the Board of County Commissioners of the County of Martin, Florida, this 14th day of APRIL, A.D. 1970.

APPROVED: H. J. Sluder
 County Engineer

W. E. Owens
 Chairman Planning and Zoning Commission

William E. Owens
 Chairman Board of County Commissioners

FILED FOR RECORD
 70 APR 14 PM 2:38
 DEPT. OF REVENUE
 CLERK OF CIRCUIT COURT
 BY _____