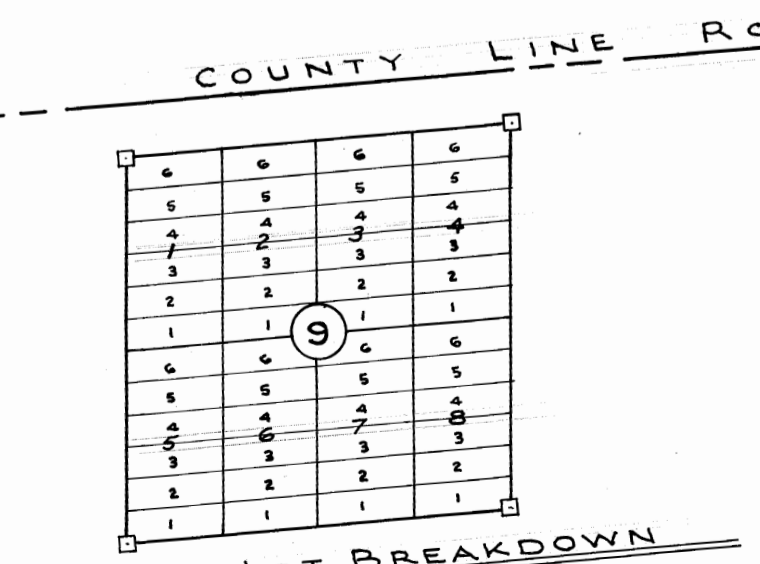
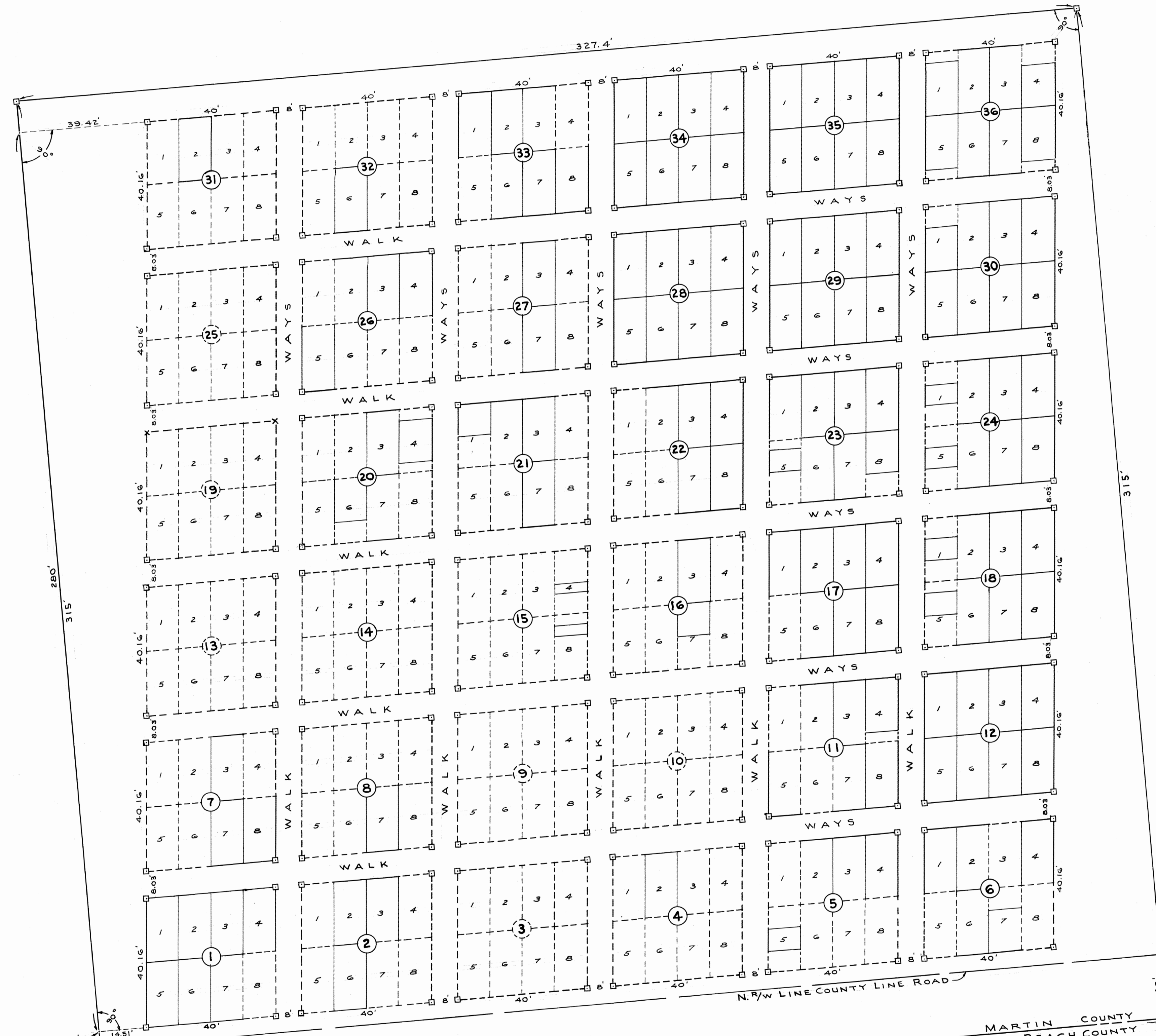
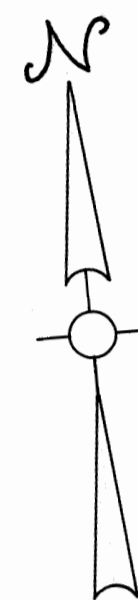


PLAT OF JUPITER CEMETERY ASSOCIATION

LYING IN SECTION 24 TOWNSHIP 40 S., RANGE 42 E.
MARTIN COUNTY, FLORIDA

86024



NOTE:
PARCELS MARKED THUS ---
NOT INCLUDED IN THIS PLAT

NOTE:
□ DENOTES P.R.M.s. (2x2 C.M.)
X CROSS IN CONC. POST

16 DAY OF Feb
1962
Plat 10
GEOGRAPHIC RECORD

STATE OF FLORIDA
COUNTY OF MARTIN ss
KNOW ALL MEN BY THESE PRESENTS, that JUPITER CEMETERY ASSOCIATION, a Corporation organized under the laws of the State of Florida, and duly authorized to do business in Section 24, Township 40 South, Range 42 East, Martin County, Florida, shown hereon as JUPITER CEMETERY ASSOCIATION, and more particularly described as follows, to wit:

Commencing at a point 690.0 feet East of the Southwest corner of section Twenty-Four (24) Township Forty (40) South, Range Forty-Two (42) East; Thence North at right angles to the South line of said Section 315 feet; Thence East 327.4 feet Thence South 315 feet to the South line of said Section; Thence West along the South line of said Section 327.4 feet to the point of beginning. Less PARCELS marked "Not Included" Subject to existing Rights of Way and Easements of Record.

has caused the same to be surveyed and platted as shown hereon, and does hereby dedicate to the perpetual use of the public, as public highways, the Streets as shown hereon and all driveways and walkways.

IN WITNESS WHEREOF, the said Corporation has cause these presents to be signed by its President and attested by its Secretary, and its corporate seal to be affixed hereto, by and with the authority of its Board of Directors, this 25 day of JANUARY, A.D. 1962

JUPITER CEMETERY ASSOCIATION

Attest: Cathryn Raby Secretary
By: Anna Ninear President

STATE OF FLORIDA
COUNTY OF MARTIN ss
I HEREBY CERTIFY that on this day personally appeared before me, an officer duly authorized to administer oaths and take acknowledgments, ANNA MINEAR and CATHRYN RABY, President and Secretary, respectively, of JUPITER CEMETERY ASSOCIATION, an Florida Corporation, to me well known and known to me to be the individuals described in, and who executed the foregoing dedication, and they acknowledged before me that they executed the same for the purposes therein expressed.

WITNESS my hand and official seal at Jupiter County of Palm Beach and State of Florida, this 25 day of January, A.D. 1962

Shirley P. Brown
Notary Public State of Florida at Large

My Commission expires: Sept. 6, 1964

STATE OF FLORIDA ss
COUNTY OF MARTIN
I HEREBY CERTIFY: that the plat shown hereon is a true and correct representation of a survey made under my direction, of the hereon described property, and that said survey is accurate to the best of my knowledge and belief and that permanent monuments (P.R.M.s) have been placed as required by law.

Billie D. Jenkins
Billie D. Jenkins
Registered Land Surveyor No. 1103
State of Florida

Subscribed and sworn to before me this 25 day of January, A.D. 1962

Wesley S. Weston
Notary Public State of Florida at Large
My Commission expires: April 14, 1963

This plat approved 13 day of Feb., A.D. 1962
Board of County Commissioners

By: Frank A. Walker Chairman
By: Asst. County Engineer

BILLIE D. JENKINS
LAND SURVEYOR, ENGINEER
JUPITER, FLORIDA

**PLAT OF
JUPITER CEMETERY
ASSOCIATION**

DRAWN BY: H.N.	FIELD BK. 7	PAGES 45
CHECKED BY: B.J.	SCALE: 1"=20'	
DATE: 1-22-62	DWG. No.	