

STATE OF FLORIDA SS
COUNTY OF MARTIN

KNOW ALL MEN BY THESE PRESENTS; THAT THE KREMSEY LAND CORPORATION A CORPORATION ORGANIZED AND EXISTING UNDER THE LAWS OF THE STATE OF FLORIDA HAS CAUSED THE ATTACHED PLAT, HIBISCUS PARK, SECTION 3, TO BE SUBDIVIDED AND PLATTED AS SHOWN HEREON AND DOES HEREBY DEDICATE TO THE PERPETUAL USE OF THE PUBLIC, THE ROADS AND DITCHES SHOWN HEREON RESERVING HOWEVER UNTO ITSELF, ITS LEGAL REPRESENTATIVES OR ASSIGNS THE REVERSION OR REVERSIONS WHENEVER THE SAME MAY BE ABANDONED BY THE PUBLIC OR DISCONTINUED BY LAW. IN WITNESS WHEREOF IT HAS CAUSED THESE PRESENTS TO BE SIGNED BY ITS PRESIDENT AND ITS CORPORATE SEAL AFFIXED AND ATTESTED BY ITS SEC-TREAS. THIS 5TH DAY OF Oct. AD. 1956

WITNESS Lloyd W. Roper
WITNESS Joseph Greenlee

KREMSEY LAND CORPORATION
Frank J. Kremser
PRESIDENT
Wayne R. Kremser
SEC-TREAS.

ACKNOWLEDGEMENT

STATE OF FLORIDA SS
COUNTY OF MARTIN

I HEREBY CERTIFY: THAT ON THIS DAY PERSONALLY APPEARED BEFORE ME, AN OFFICER DULY AUTHORIZED TO ADMINISTER OATHS AND TAKE ACKNOWLEDGEMENT, FRANK J. KREMSEY AND WAYNE R. KREMSEY PRESIDENT AND SEC-TREAS RESPECTIVELY OF THE KREMSEY LAND CORPORATION, WELL KNOWN TO ME TO BE THE PERSONS DESCRIBED IN AND WHO EXECUTED THE FOREGOING DEDICATION OF THE PLAT AND WHO ACKNOWLEDGED BEFORE ME THAT THEY EXECUTED THE SAME FOR THE PURPOSE THEREIN EXPRESSED. WITNESS MY HAND AND SEAL AT STUART, FLA. THIS 5TH DAY OF Oct. A.D. 1956

J. L. Linn
NOTARY PUBLIC OF FLORIDA
MY COMMISSION EXPIRES, May 8 1960

CERTIFICATE

STATE OF FLORIDA SS
COUNTY OF MARTIN

I HEREBY CERTIFY THAT THE ATTACHED PLAT IS A TRUE REPRESENTATION OF A SURVEY MADE UNDER MY DIRECTION AND THAT IT IS TRUE AND CORRECT TO THE BEST OF MY KNOWLEDGE AND BELIEF AND PERMANENT REFERENCE MONUMENTS HAVE BEEN PROPERLY PLACED AS REQUIRED BY LAW.

Joseph S. Greenlee
JOSEPH S. GREENLEE, REG. LAND SURVEYOR
FLORIDA CERTIFICATE NO. 665

SUBSCRIBED AND SWORN TO AND BEFORE ME AT STUART FLA. THIS 5TH OF Oct. AD. 1956

Lettie Zarnita
NOTARY PUBLIC OF FLORIDA
MY COMMISSION EXPIRES July 6, 1960

APPROVED
MARTIN COUNTY BOARD OF COUNTY COMMISSIONERS

BY Earl Bean

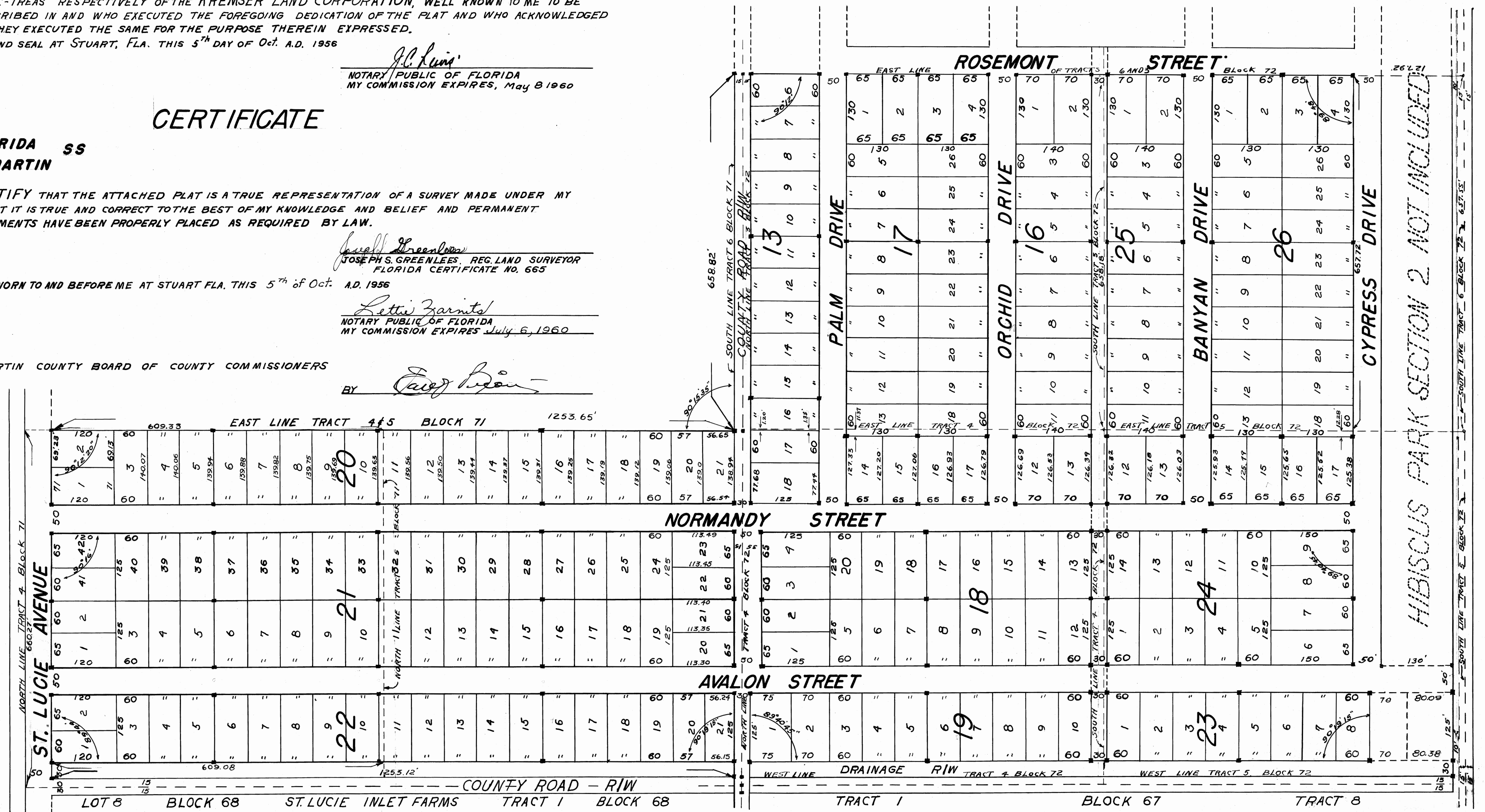
SECTION 3
HIBISCUS PARK
MARTIN COUNTY FLORIDA
KREMSEY LAND CORPORATION
OWNERS AND DEVELOPERS

FILE NO. 53927
STATE OF FLORIDA SS.
COUNTY OF MARTIN
THIS PLAT WAS FILED FOR RECORD AT 9:25 AM THIS 5TH DAY OF Oct. AD. 1956 AND DULY RECORDED IN PLAT BOOK 3 PAGE 53 MARTIN COUNTY, FLORIDA PUBLIC RECORDS
Dorothy Peral
CLERK OF CIRCUIT COURT
By: Lettie Zarnita, S.C.

HIBISCUS PARK, SECTION 3, BEING A SUBDIVISION OF TRACTS 4 AND 5 BLOCK 71, TRACTS 3 AND 4 BLOCK 72 OF THE ST. LUCIE INLET FARMS S/D AS RECORDED IN PLAT BOOK 1, PAGE 38, PALM BEACH COUNTY RECORDS, ALSO THAT PART OF TRACTS 3 AND 6, BLOCK 72, ST. LUCIE INLET FARMS S/D THAT IS SHOWN AS NOT INCLUDED IN THE PLAT OF HIBISCUS PARK, SECTION 2, ALSO A REPLAT OF LOT A BLOCK 23, HIBISCUS PARK, SECTION 2 AS RECORDED IN PLAT BOOK 3, PAGE 27, MARTIN COUNTY FLORIDA PUBLIC RECORDS.

FUGATE & GREENLEES
ENGINEERING & SURVEYING
STUART FLA.
SCALE 1" = 100'

CONCRETE MONUMENT SHOWN



HIBISCUS PARK SECTION 2 NOT INCLUDED

