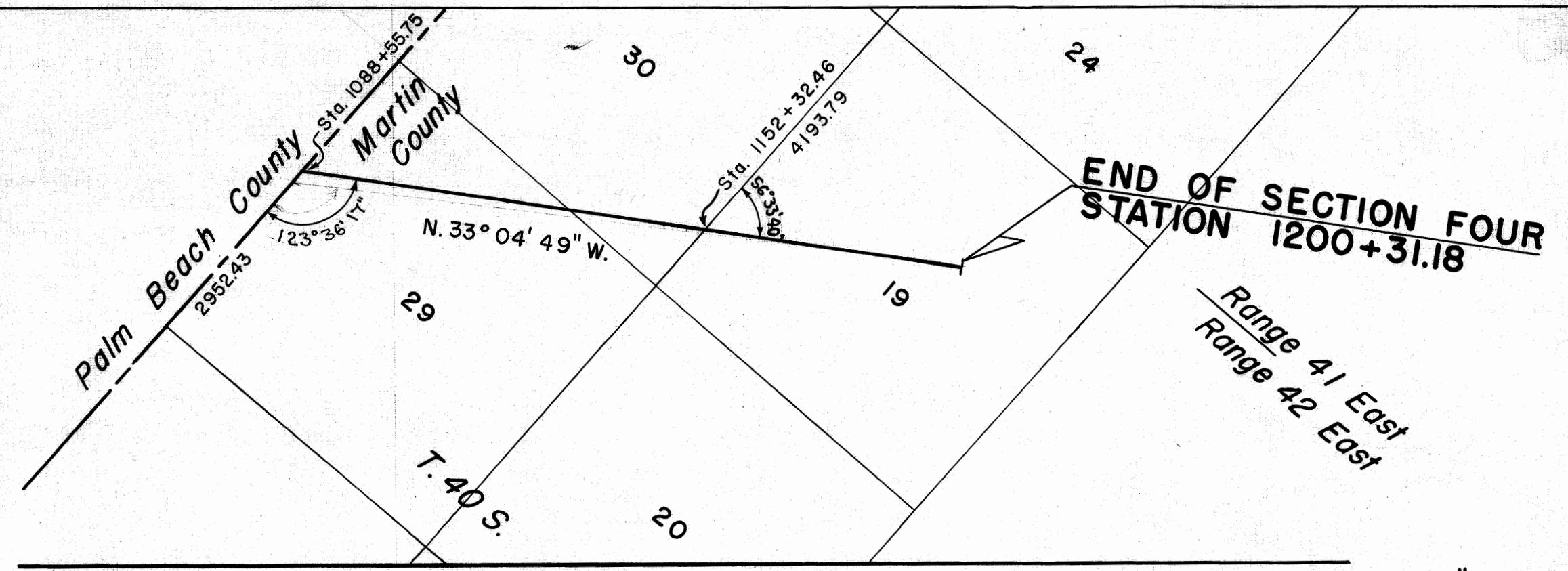


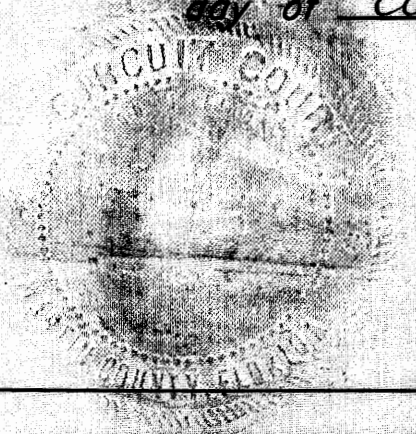
45810



FILED & RECORDED  
 MARTIN COUNTY, FLA.  
 1954 AUG 24 AM 11:03  
 DOROTHY MERCEL CLERK

- Scale 1"=2000' -

Filed for record in the Office of  
 the Clerk of Circuit Court, the County  
 of Martin, State of Florida in Map  
 Book 3 Pages 10, 11, 12 on the 24  
 day of August A. D. 1954



Dorothy Pierce  
 Clerk of Circuit Court  
 Martin County, Florida

We, Marvin D. Adams as Chairman, and J.E. Robinson as Secretary of the Florida State Turnpike Authority, do hereby certify that this map is the original map showing location and survey of Sunshine State Parkway, Section 4 in Martin County, Florida: Extending in a northerly direction from a point on the south line of Section 29, T. 40 S., R. 42 E., said line being the Boundary between Palm Beach County and Martin County and said point being 2952.43 feet West from the Southeast Corner of said Section 29.

Prepared and adopted by the Florida State Turnpike Authority under the Provisions of Chapter 28128, Laws of Florida Acts of 1953; by resolution of Florida State Turnpike Authority adopted \_\_\_\_\_.

Marvin D. Adams  
 CHAIRMAN  
J. E. Robinson  
 SECRETARY

Approved

J. E. Everson  
 CONSULTING ENGINEER  
 Reynolds, Smith & Hills  
 by: Norman L. Bryan  
 SECTION ENGINEER

Date: June 30, 1954