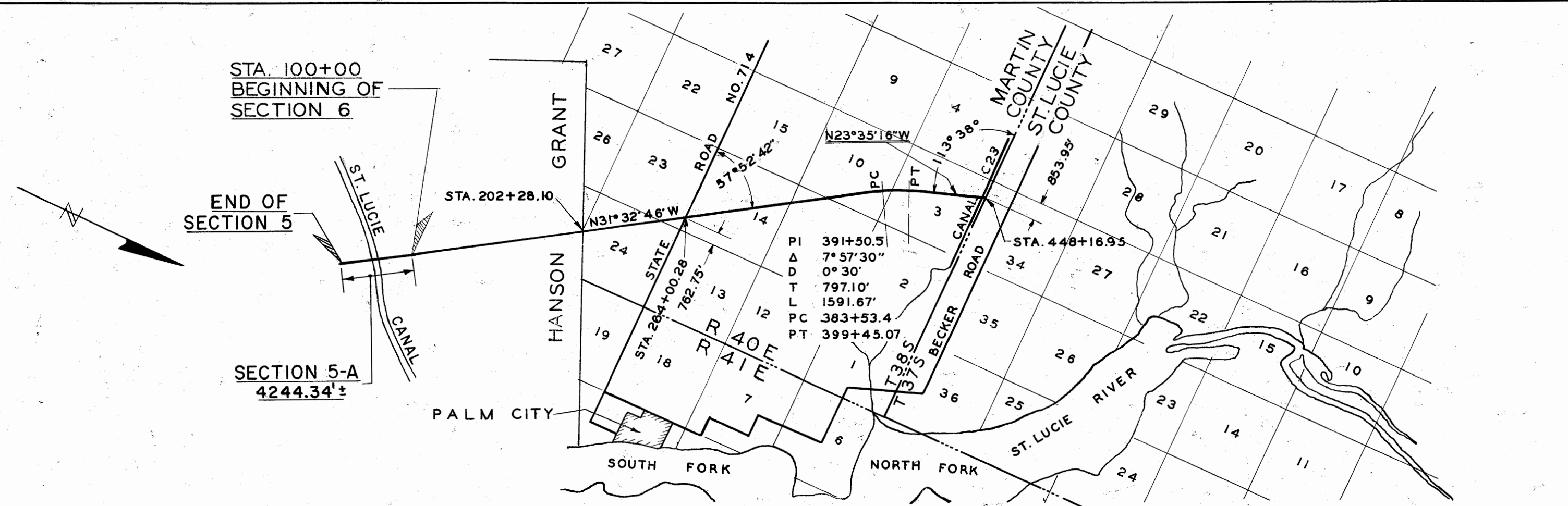
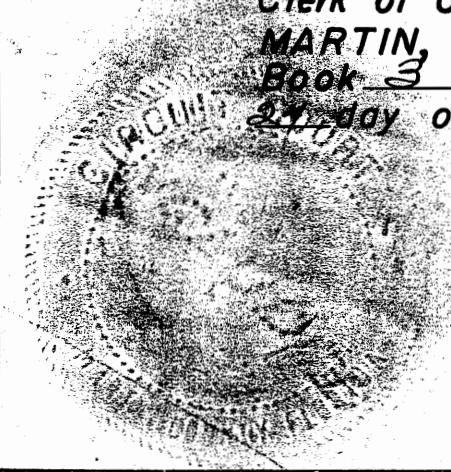


45310



SCALE ~ 1" = 6,000'

Filed for record in the Office of the  
 Clerk of Circuit Court, the County of  
 MARTIN, State of Florida, in Road Plat  
 Book 3, Pages 10, 11, 12 on the  
 27th day of August A. D. 1954.



*Dorothy Preece*  
 Clerk of Circuit Court  
 Martin County, Florida

We, Marvin D. Adams as Chairman, and J. E. Robinson as Secretary of the Florida State Turnpike Authority, do hereby certify that this map is the original map showing location and survey of Sunshine State Parkway, Section 6 in Martin County, Florida Extending in northerly direction from a point 210 feet Westerly and 400 feet Northerly of the Southeast Corner of Tract 6 Block 26 St. Lucie Inlet Farms ( Part of the John M. Hanson Grant. ) Section 5-A extends Southerly 4244.34± from point of beginning of Section 6.

Prepared and adopted by the Florida State Turnpike Authority under the Provisions of Chapter 28128, Laws of Florida Acts of 1953, by resolution of Florida State Turnpike Authority adopted June 30, 1954.

*Marvin D. Adams*  
 CHAIRMAN  
*J. E. Robinson*  
 SECRETARY

Approved

*J. E. Robinson*  
 CONSULTING ENGINEER  
*Freeman H. Horton*  
 SECTION ENGINEER