

Filed for record in Plat Bk. 3, Pg. 9
 this 30th day of July A.D., 19 54
 at 3:58 P.M. at Stuart, Florida.

CLERK OF THE CIRCUIT COURT
 Dorothy Peirce

FILE NO. : 45128

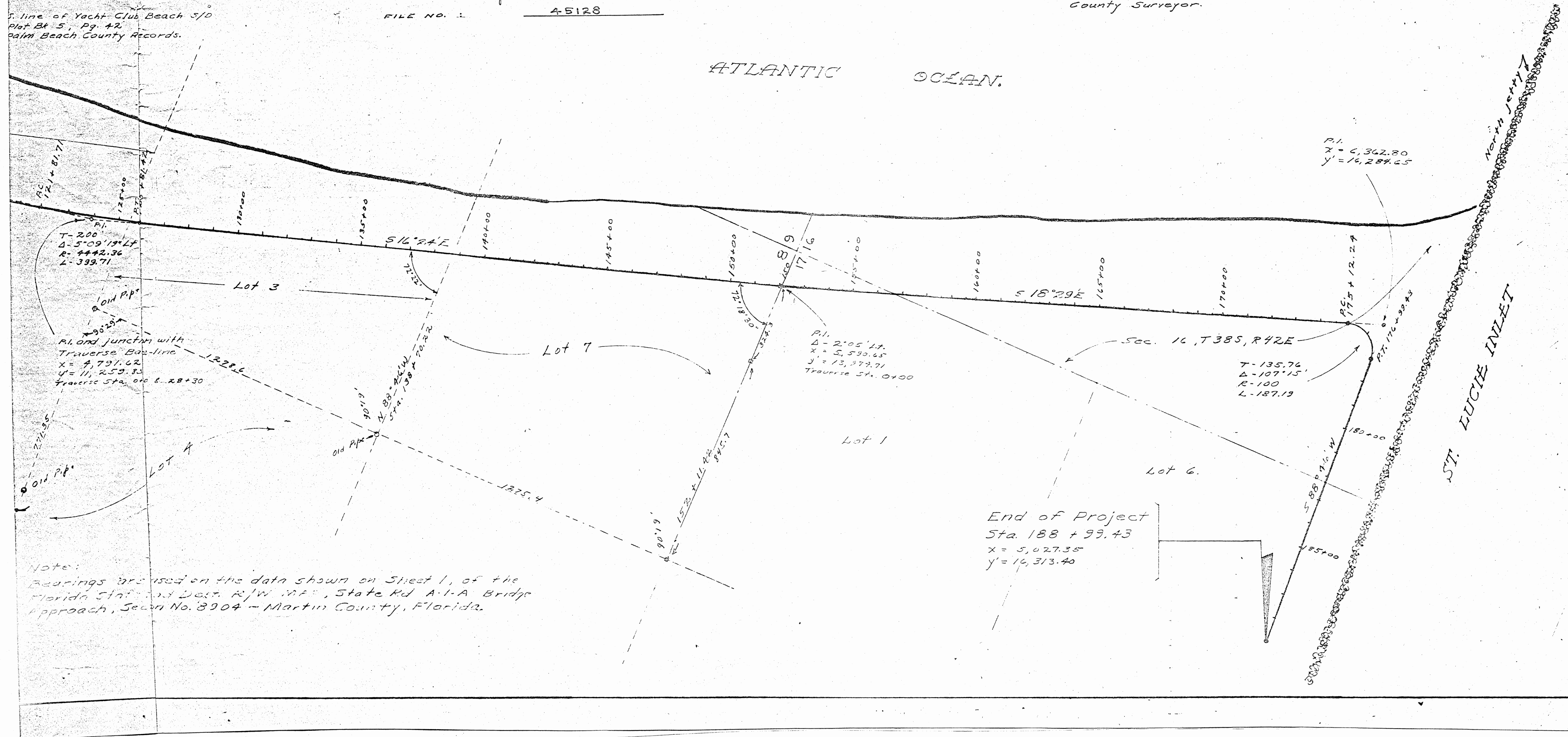
APPROVED - June 23rd, 1954

BOARD OF COUNTY COMMISSIONERS OF MARTIN COUNTY

By: James E. Brock
 County Surveyor.

S. line of Yacht Club Beach S/D
 Plat Bk. 5, Pg. 42
 Palm Beach County Records.

ATLANTIC OCEAN.



Note:
 Bearings are used on the data shown on Sheet 1, of the
 Florida State Dept. R/W Map, State Rd A-1-A Bridge
 Approach, Section No. 8904 - Martin County, Florida.