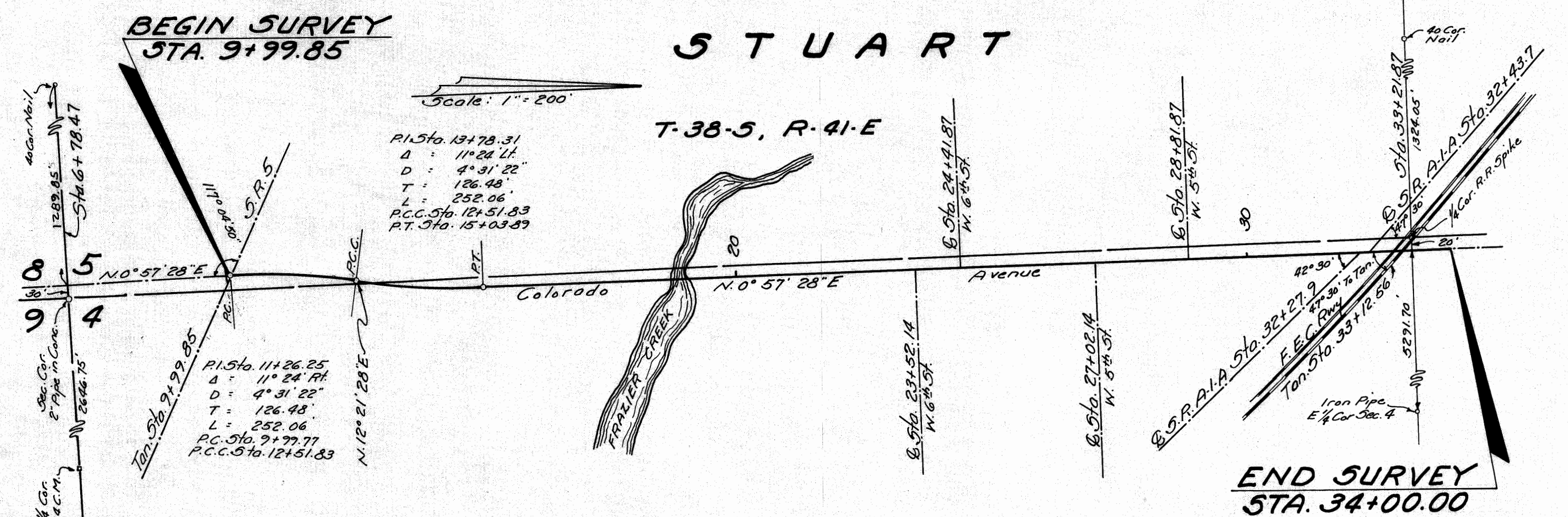


44725



Filed for record in the Office of the Clerk of Circuit Court for the County of Martin, State of Florida in Map Book 3 Page 7 on the 10th day of June, 1954

*Dorothy Prince*  
Clerk of Circuit Court  
Martin County, Florida

We, Cecil M. Webb, as Chairman of the State Road Department of the State of Florida, and L. A. Froleigh, as Acting Secretary of the State Road Department of the State of Florida, do hereby certify that this map is the Official Map of Location and Survey of a portion of Section 8906, designated as a part of State Road 76 in Martin County, Florida: Said portion of Section 8906, extending from State Road 5, Northerly along Colorado Avenue in Stuart, to State Road A-1-A and Florida East Coast Railway Crossing.

Prepared and adopted by the State Road Department of the State of Florida under provisions of Section 341.47, Florida Statutes of 1941.

Letting into

*Cecil M. Webb*  
Chairman State Road Department

*L. A. Froleigh*  
Acting Secretary State Road Department

*R. J. Lupton*  
Acting State Highway Engineer

Date: April 28, 1954

Sec. 8906, Rd. 76, Martin County