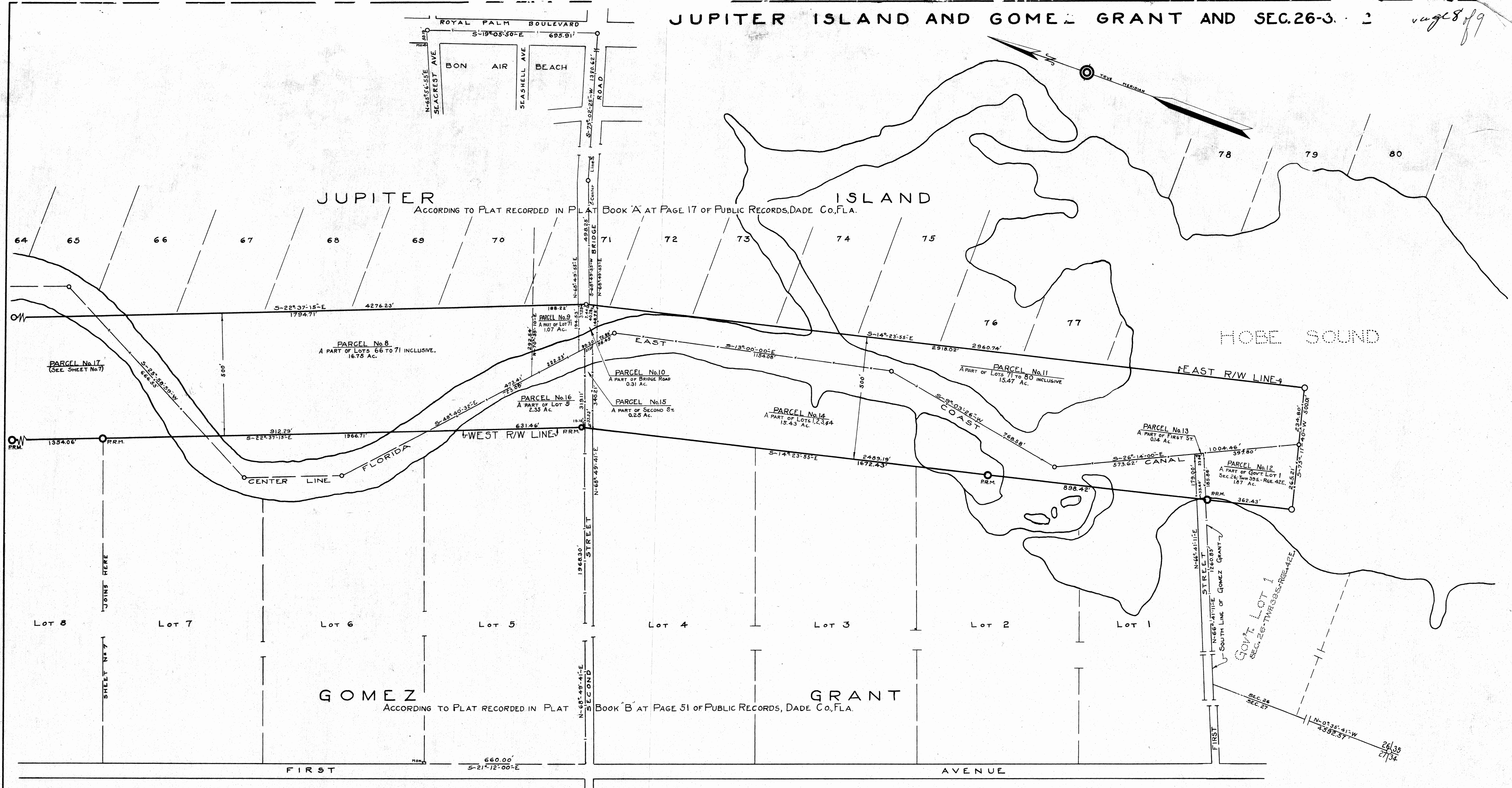


Aug 28/99



TABULATION OF PARCELS						
ACREAGE BY PLANIMETER				EXCLUDED		
Parcel	Section	Subdivision	Gross Area	R/W of Waterway	Present Waterway	Total Copied
8	GOMEZ GRANT	A part of Lots 66 to 71 inclusive, Jupiter Island	16.75	0.00	2.59	14.16
9	GOMEZ GRANT	A part of Lot 71, Jupiter Island	1.07	0.00	0.37	0.70
10	GOMEZ GRANT	A part of Bridge Road	0.31	0.00	0.12	0.19
11	GOMEZ GRANT	A part of Lots 71 to 80 inclusive, Jupiter Isl.	15.47	0.00	10.37	5.10
12	Sec. 26	A part of Govt. Lot 1	1.87	0.00	0.90	0.97
13	GOMEZ GRANT	A part of First St.	0.14	0.00	0.08	0.06
14	GOMEZ GRANT	A part of Lots 1 to 4 inclusive.	15.43	0.00	5.10	10.33
15	GOMEZ GRANT	A part of Second St.	0.25	0.00	0.05	0.20
16	GOMEZ GRANT	A part of Lot 5	2.35	0.00	0.46	1.89

LEGEND

- Township lines are shown thus
- Section lines "
- 1/4 Section lines "
- Parcel Boundaries "
- Existing Canal "
- Right of Way lines are "
- Points of Intersection "
- R.R. Monuments "
- R.R. Tie line "
- Boundary of present Waterway "
- Property lines outside of R.W. "

INTRACOASTAL WATERWAY
 FROM JACKSONVILLE, FLA. TO MIAMI, FLA.
FLORIDA EAST COAST CANAL
 SHOWING LOCATION AND RIGHT OF WAY THROUGH
 MARTIN COUNTY, FLORIDA
 GOMEZ GRANT AND SEC. 26; TWR. 39S; RGE. 42E.
 PREPARED FOR
FLORIDA INLAND NAVIGATION DISTRICT
 UNDER DIRECTION OF
 GILBERT A. YOUNGBERG CHIEF ENGINEER
 BY
 CHARLTON & DAVIS CIVIL ENGINEERS

Dec. 1930
 SHEET No 8 of 9 SHEETS
 SCALE - 1" = 200 Feet

TRACED BY G.A.Y.
 CHECKED BY G.A.Y.
 RECHECKED BY G.A.Y.
 APPROVED BY G.A.Y.