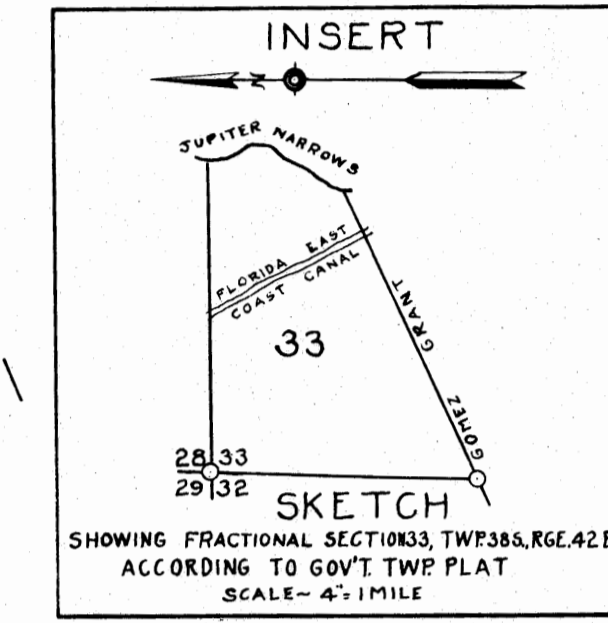
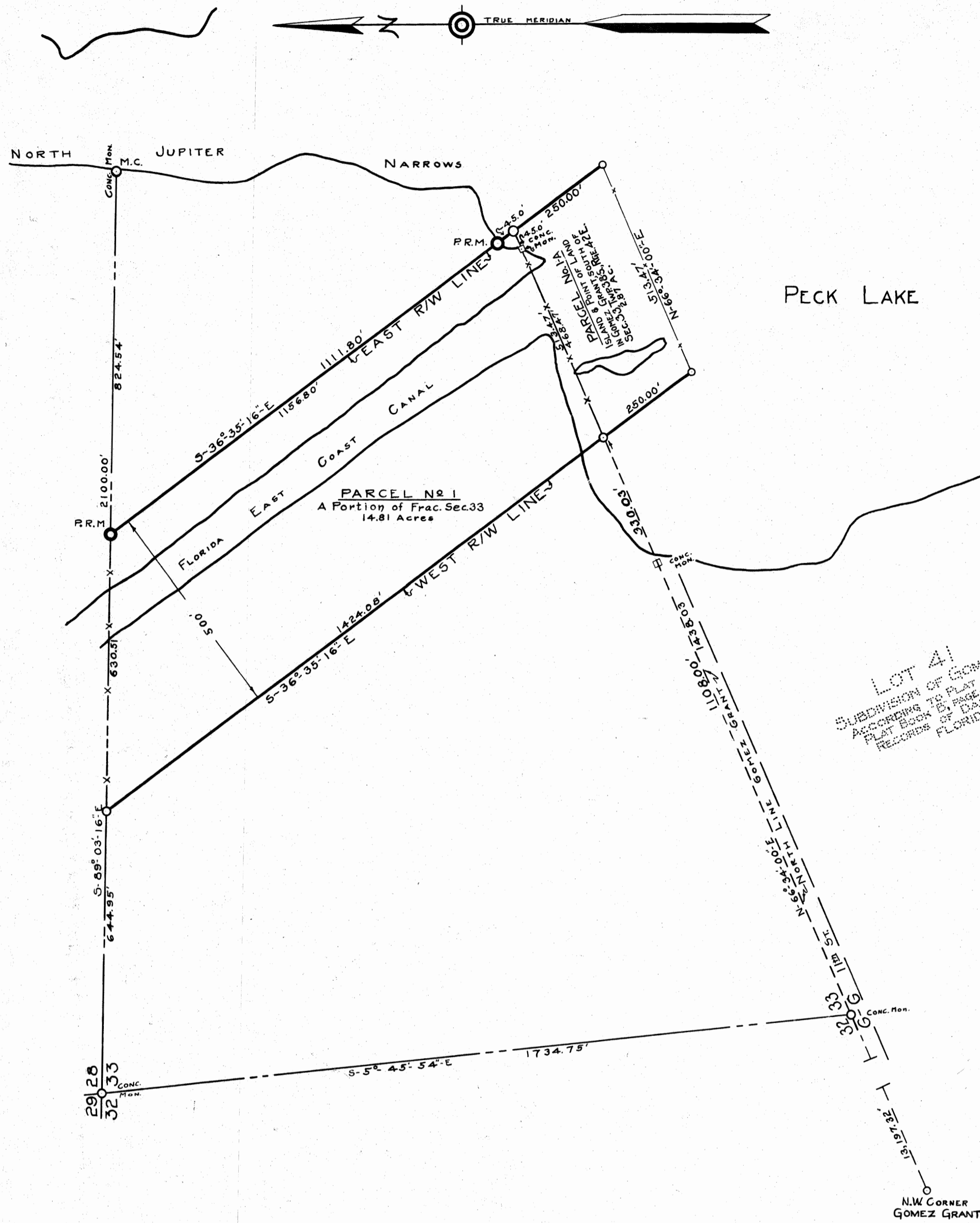


SEC. 33-38-42
AND PART OF GOMEZ GRANT



LOT 41
SUBDIVISION OF GOMEZ GRANT
ACCORDING TO PLAN RECORDED IN
PLAT BOOK OF PUBLIC RECORDS,
FLORIDA, FLORIDA.

TABULATION OF PARCELS						
ACREAGE BY PLANIMETER				EXCLUDED		
Parcel	Section	Subdivision	Gross Area	R/W now owned	Present Waterway	Total
1	33	Portion of Frac. Sec. 33	14.81	0.00	2.31	12.50
1A	GOMEZ GRANT	Island of Port of Land south of Sec. 33	2.87	0.00	0.65	2.22

LEGEND

Township lines are shown thus

Section lines " " " "

1/4 Section lines " " " "

Parcel Boundaries " " " "

Existing Canal " " " "

Right of Way lines are " " " "

Points of Intersection " " " "

P.R. Monuments " " " "

P.R.M. Tie line " " " "

Boundary of present Waterway

Property lines outside of R.W.

INTRACOASTAL WATERWAY
FROM JACKSONVILLE, FLA. TO MIAMI, FLA.
FLORIDA EAST COAST CANAL
SHOWING LOCATION AND RIGHT OF WAY THROUGH
MARTIN COUNTY, FLORIDA
SEC. 33, TWP. 38S; RGE. 42E.
AND PART OF GOMEZ GRANT
PREPARED FOR

FLORIDA INLAND NAVIGATION DISTRICT
UNDER DIRECTION OF
GILBERT A. YOUNGBERG CHIEF ENGINEER
BY CHARLTON & DAVIS CIVIL ENGINEERS

OCT 1930
SHEET No 4 of 9 SHEETS
SCALE - 1" = 200 Feet

TRACED BY G.A.D.
CHECKED BY G.A.D.
RECHECKED BY G.A.D.
APPROVED BY G.A.D.
OK.