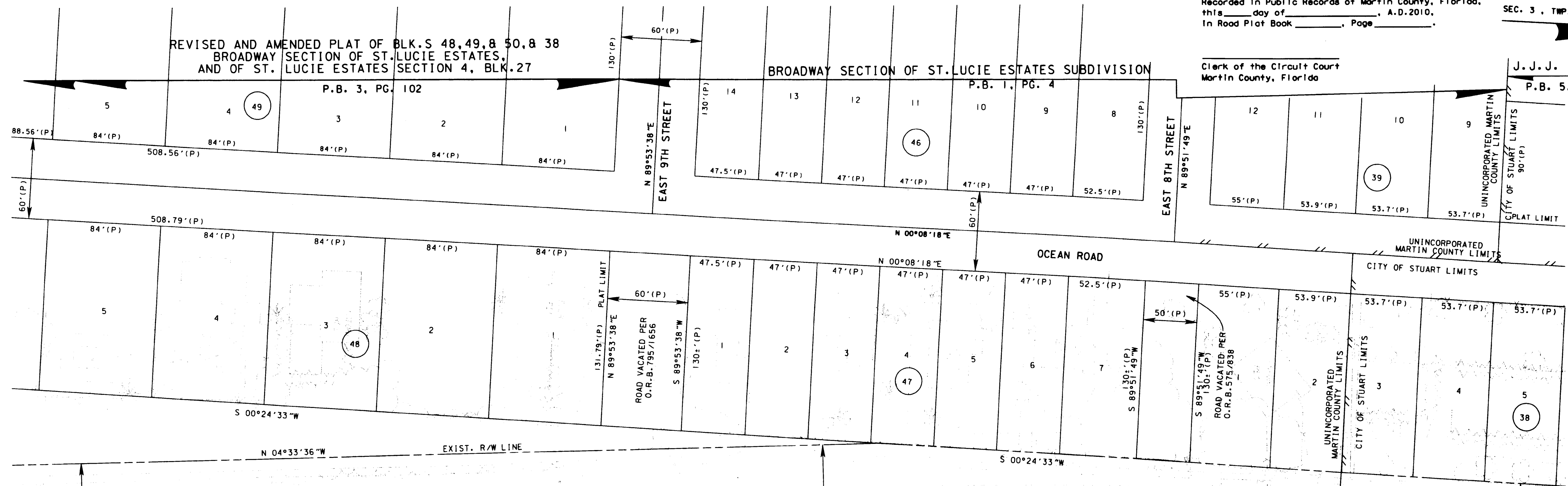
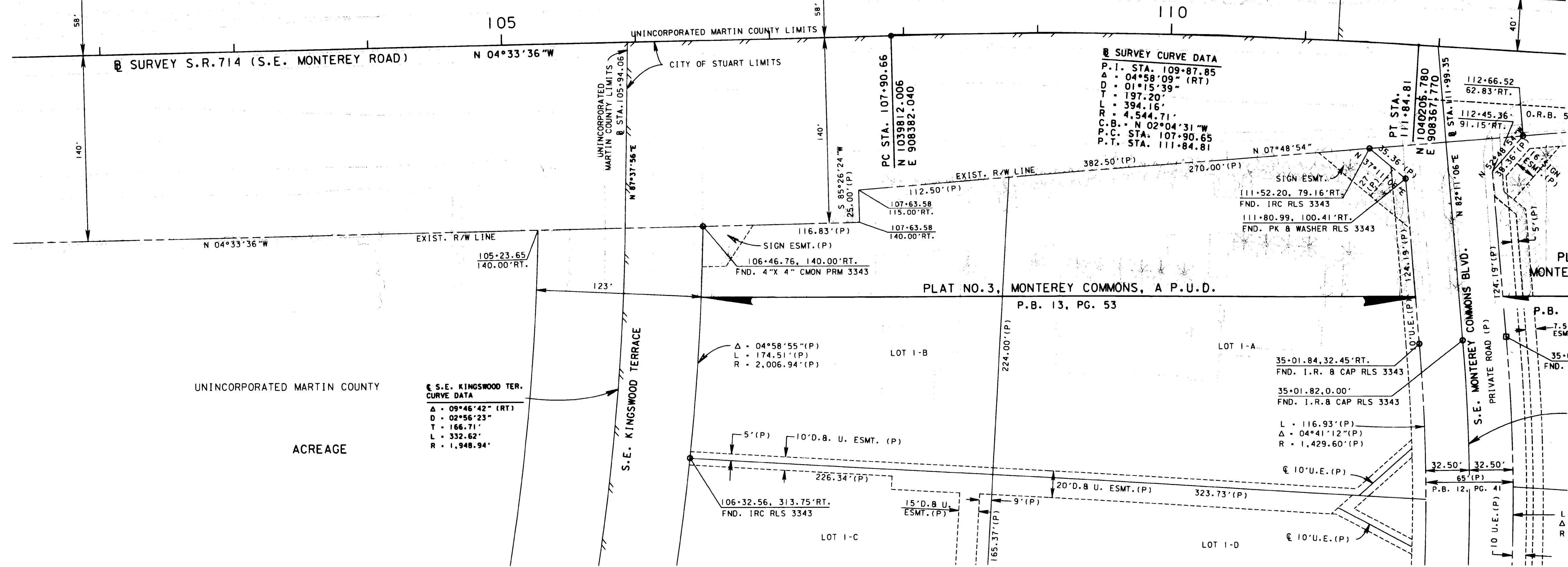


This right of way map when recorded is an instrument of conveyance, transferring in accordance with Florida Statutes 337.29 and 335.0415 all right, title, and interest of Martin County in the road, street, highway, set forth on this map to the State of Florida Department of Transportation.

Recorded in Public Records of Martin County, Florida, this _____ day of _____, A.D. 2010, in Road Plat Book _____, Page _____. SEC. 3, TWP. 38 S., RGE. 41 E.



Clerk of the Circuit Court Martin County, Florida J.J.J. ESTATES P.B. 5, PG. 58



SURVEY CURVE DATA
P.I. STA. 109+87.85
Δ = 04°58'09" (RT)
D = 01°15'39"
T = 197.20'
L = 394.15'
R = 4,544.71'
P.C. STA. 107+90.65
P.T. STA. 111+84.81

S.E. KINGSWOOD TER. CURVE DATA
Δ = 09°46'42" (RT)
D = 02°56'23"
T = 166.71'
L = 332.62'
R = 1,948.94'

PLAT NO. 2, MONTEREY COMMONS, A P.U.D.
P.B. 13, PG. 25

PLAT NO. 3, MONTEREY COMMONS, A P.U.D.
P.B. 13, PG. 53

SEE SHEET ONE FOR LEGEND AND GENERAL NOTES S.R. 714 (S.E. MONTEREY ROAD) FROM S.R. 5 (U.S. 1) TO S.R. A-1-A (E. OCEAN BLVD.)

RIGHT OF WAY MAP

FLORIDA DEPARTMENT OF TRANSPORTATION
RIGHT OF WAY MAPPING

APPROVED BY	DATE								
DISTRICT RIGHT OF WAY SURVEYOR	08-31-00								
REVISION	BY	DATE	REVISION	BY	DATE	REVISION	BY	DATE	

BY	DATE	FED. PROJ. NO.	SECTION
PRELIM WALKER	05-05-99	N/A	89092-2505
FINAL MORAVA	09-16-99	STATE ROAD NO. 714	MARTIN COUNTY
CHECKED WALKER	09-30-99		

MAPS PREPARED BY	FIELD BOOK NO.'S
F.D.O.T. DISTRICT 4	4202643, 4202644, E.F.B. 22886/ARC
N.P.I. NO. 4116331	SCALE: 1" = 40'
ITEM/SEGMENT NO. 2288611	SHEET 10 OF 12