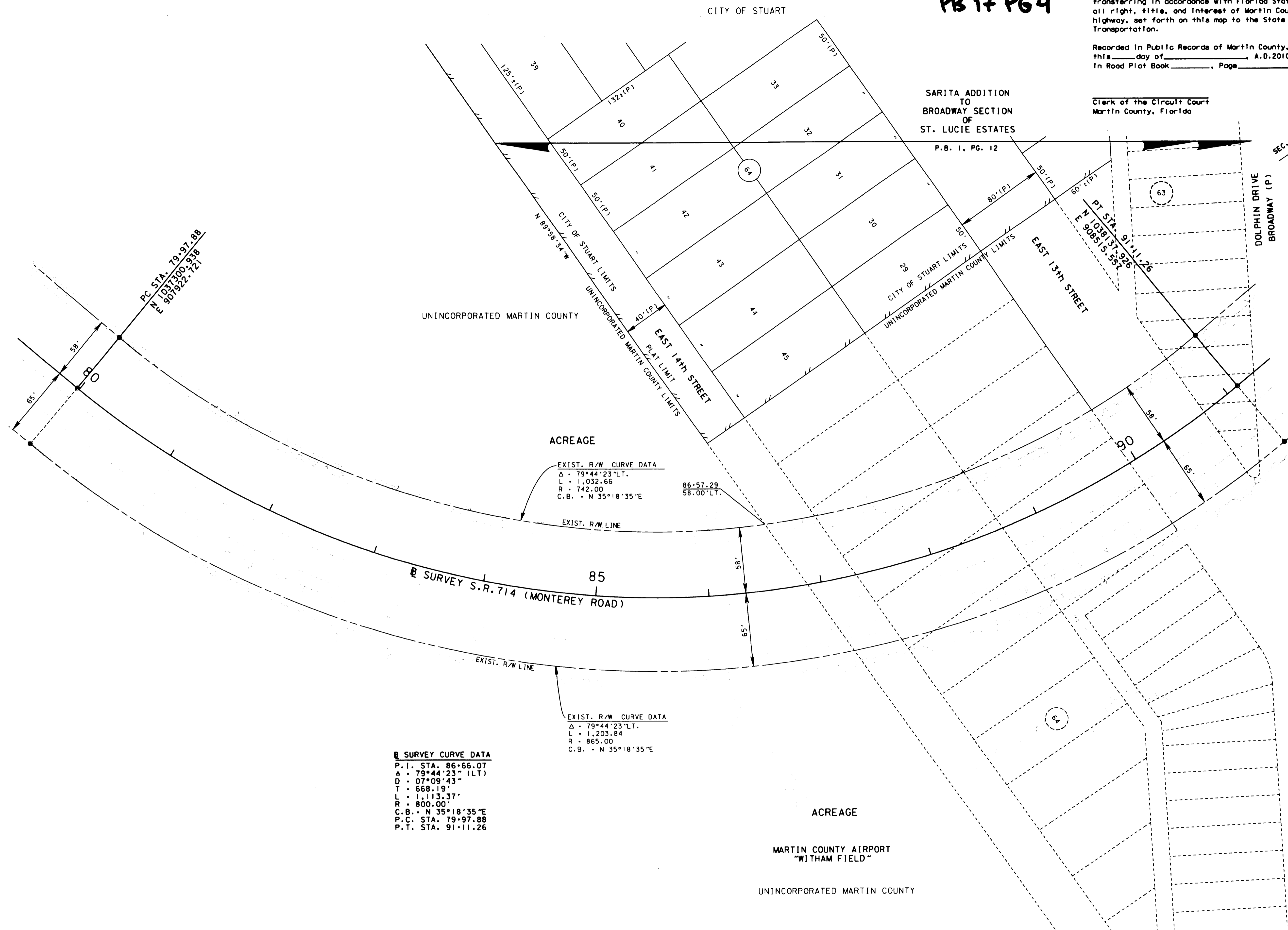


This right of way map when recorded is an instrument of conveyance, transferring in accordance with Florida Statutes 337.29 and 335.0415 all right, title, and interest of Martin County in the road, street, highway, set forth on this map to the State of Florida Department of Transportation.

Recorded in Public Records of Martin County, Florida, this \_\_\_ day of \_\_\_, A.D. 2010, In Road Plat Book \_\_\_, Page \_\_\_

Clerk of the Circuit Court  
Martin County, Florida

SEC. 10, TWP. 38 S., RGE. 41 E.



ACREAGE  
EXIST. R/W CURVE DATA  
Δ = 79°44'23"LT.  
L = 1,032.66  
R = 742.00  
C.B. = N 35°18'35"E  
86+57.29  
58.00'LT.

EXIST. R/W CURVE DATA  
Δ = 79°44'23"LT.  
L = 1,203.84  
R = 865.00  
C.B. = N 35°18'35"E

☉ SURVEY CURVE DATA  
P.I. STA. 86+66.07  
Δ = 79°44'23" (LT)  
D = 07°09'43"  
T = 668.19'  
L = 1,113.37'  
R = 800.00'  
C.B. = N 35°18'35"E  
P.C. STA. 79+97.88  
P.T. STA. 91+11.26

NOT A SURVEY

SEE SHEET ONE FOR LEGEND AND GENERAL NOTES S.R. 714 (S.E. MONTEREY ROAD) FROM S.R. 5 (U.S. 1) TO S.R. A-1-A (E. OCEAN BLVD.)

RIGHT OF WAY MAP	FLORIDA DEPARTMENT OF TRANSPORTATION RIGHT OF WAY MAPPING	APPROVED BY	DATE	BY	DATE	FED. PROJ. NO. N/A	SECTION 89092-2505	MAPS PREPARED BY	FIELD BOOK NO. 4202643
		DISTRICT RIGHT OF WAY SURVEYOR	REVISION	BY	DATE	PRELIM WALKER 05-05-99	STATE ROAD NO. 714	F.D.O.T. DISTRICT 4	4202644, E.F.B. 228861-ARC
						CHECKED WALKER 09-30-99	MARTIN COUNTY	W.P.I. NO. 4116331	SCALE: 1" = 40'
								ITEM/SEGMENT NO. 2288611	SHEET 8 OF 12