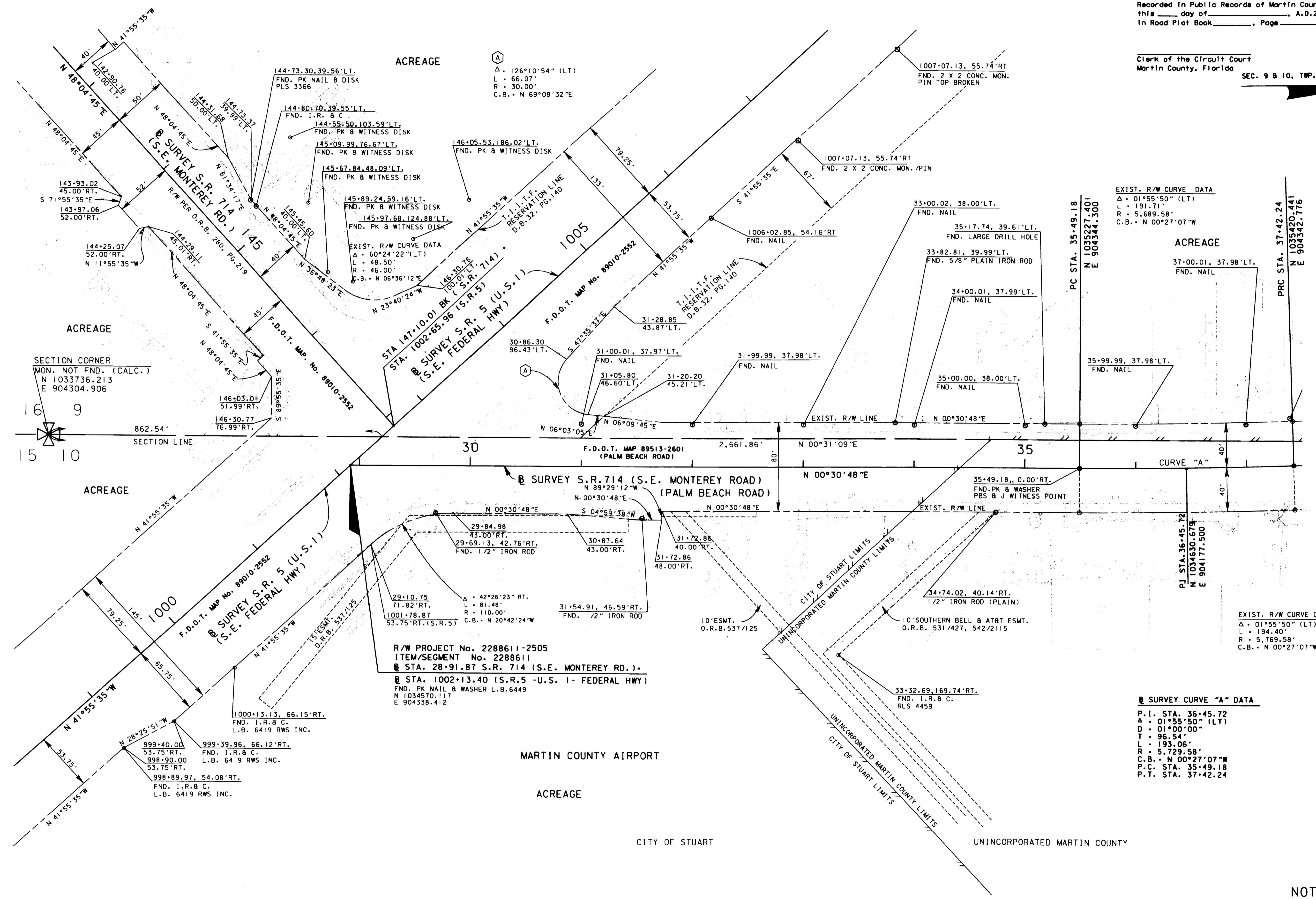


This right of way map when recorded is an instrument of conveyance, transferring in accordance with Florida Statutes 337.29 and 335.0415 all right, title, and interest of Martin County in the road, street, highway, set forth on this map to the State of Florida Department of Transportation.

Recorded in Public Records of Martin County, Florida, this \_\_\_\_\_ day of \_\_\_\_\_, A.D. 2010, In Road Plat Book \_\_\_\_\_, Page \_\_\_\_\_.

Clerk of the Circuit Court  
Martin County, Florida  
SEC. 9 & 10, TWP. 38 S., RGE. 41 E.

UNINCORPORATED MARTIN COUNTY



SECTION CORNER  
MON. NOT FND. (CALC.)  
N 1033736.213  
E 904304.906

ACREAGE

ACREAGE

ACREAGE

△ = 126°10'54" (LT)  
L = 66.07'  
R = 30.00'  
C.B. = N 69°08'32" E

EXIST. R/W CURVE DATA  
△ = 01°55'50" (LT)  
L = 191.71'  
R = 5,689.58'  
C.B. = N 00°27'07" W

ACREAGE

37.00.01, 37.98.LT.  
FND. NAIL

EXIST. R/W CURVE DATA  
△ = 01°55'50" (LT)  
L = 194.40'  
R = 5,769.58'  
C.B. = N 00°27'07" W

△ SURVEY CURVE "A" DATA  
P.I. STA. 36+45.72  
△ = 01°55'50" (LT)  
D = 01°00'00"  
T = 96.54'  
L = 193.06'  
R = 5,729.58'  
C.B. = N 00°27'07" W  
P.C. STA. 35+49.18  
P.T. STA. 37+42.24

R/W PROJECT No. 2288611-2505  
ITEM/SEGMENT No. 2288611  
△ STA. 28+91.87 S.R. 714 (S.E. MONTEREY RD.)  
△ STA. 1002+13.40 (S.R.5 -U.S. 1- FEDERAL HWY)  
FND. PK NAIL & WASHER L.B.6449  
N 1034570.117  
E 904338.412

MARTIN COUNTY AIRPORT  
ACREAGE

CITY OF STUART

UNINCORPORATED MARTIN COUNTY

NOT A SURVEY

SEE SHEET ONE FOR LEGEND AND GENERAL NOTES S.R.714 (S.E. MONTEREY ROAD) FROM S.R.5 (U.S.1) TO S.R. A-1-A (E. OCEAN BLVD.)

RIGHT OF WAY MAP

FLORIDA DEPARTMENT OF TRANSPORTATION  
RIGHT OF WAY MAPPING

APPROVED BY	DATE	BY	DATE	BY	DATE
	08-31-00	PRELIM	05-05-99	WALKER	
		FINAL	09-16-99	MORAVA	
		CHECKED	09-30-99	WALKER	
DISTRICT RIGHT OF WAY SURVEYOR	REVISION	BY	DATE	REVISION	BY

FED. PROJ. NO. N/A	SECTION 89092-2505
STATE ROAD NO. 714	MARTIN COUNTY

MAPS PREPARED BY F.D.O.T. DISTRICT 4	FIELD BOOK NO.'S 4202644, E.F.B. 228861.ARC
W.P.L. NO. 4116331	SCALE: 1" = 40'
ITEM/SEGMENT NO. 2288611	SHEET 3 OF 12