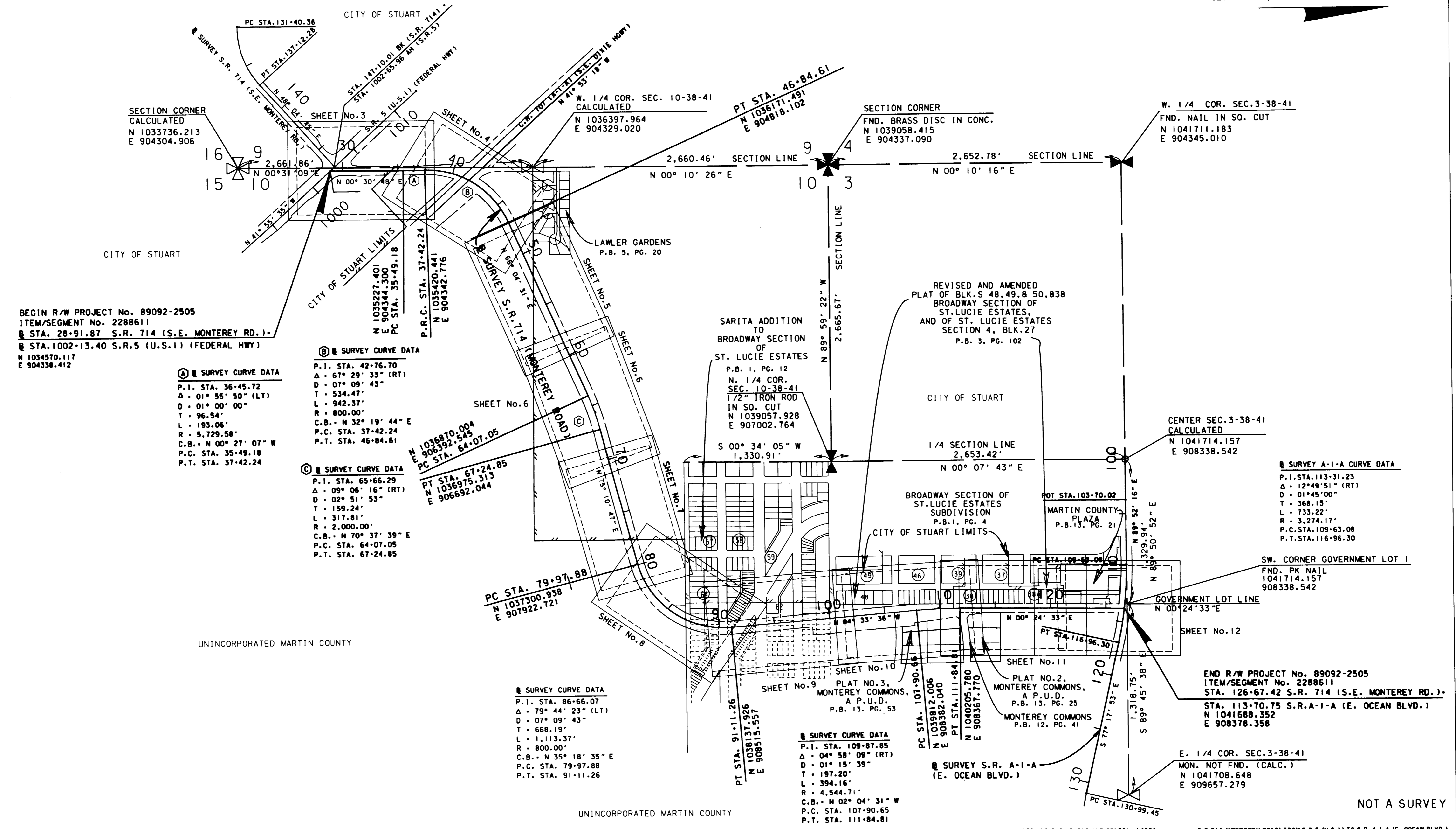


This right of way map, when recorded is an instrument of conveyance, transferring in accordance with Florida Statutes 337.29 and 335.0415 all right, title, and interest of Martin County in the road, street, highway, set forth on this map to the State of Florida Department of Transportation.

Recorded in Public Records of Martin County, Florida, this _____ day of _____, A.D. 2010, in Road Plat Book _____, Page _____.

Clerk of the Circuit Court
Martin County, Florida

SECTIONS 3, 9 & 10, TWP. 38 S., RGE. 41 E.



BEGIN R/W PROJECT No. 89092-2505
 ITEM/SEGMENT No. 2288611
 STA. 28+91.87 S.R. 714 (S.E. MONTEREY RD.)
 STA. 1002+13.40 S.R. 5 (U.S. 1) (FEDERAL HWY)
 N 1034570.117
 E 904338.412

Q SURVEY CURVE DATA
 P.I. STA. 36+45.72
 Δ = 01° 55' 50" (LT)
 D = 01° 00' 00"
 T = 96.54'
 L = 193.06'
 R = 5,729.58'
 C.B. = N 00° 27' 07" W
 P.C. STA. 35+49.18
 P.T. STA. 37+42.24

B SURVEY CURVE DATA
 P.I. STA. 42+76.70
 Δ = 67° 29' 33" (RT)
 D = 07° 09' 43"
 T = 534.47'
 L = 942.37'
 R = 800.00'
 C.B. = N 32° 19' 44" E
 P.C. STA. 37+42.24
 P.T. STA. 46+84.61

C SURVEY CURVE DATA
 P.I. STA. 65+66.29
 Δ = 09° 06' 16" (RT)
 D = 02° 51' 53"
 T = 159.24'
 L = 317.81'
 R = 2,000.00'
 C.B. = N 70° 37' 39" E
 P.C. STA. 64+07.05
 P.T. STA. 67+24.85

SURVEY CURVE DATA
 P.I. STA. 86+66.07
 Δ = 79° 44' 23" (LT)
 D = 07° 09' 43"
 T = 668.19'
 L = 1,113.37'
 R = 800.00'
 C.B. = N 35° 18' 35" E
 P.C. STA. 79+97.88
 P.T. STA. 91+11.26

SURVEY CURVE DATA
 P.I. STA. 109+87.85
 Δ = 04° 58' 09" (RT)
 D = 01° 15' 39"
 T = 197.20'
 L = 394.16'
 R = 4,544.71'
 C.B. = N 02° 04' 31" W
 P.C. STA. 107+90.65
 P.T. STA. 111+84.81

SURVEY A-1-A CURVE DATA
 P.I. STA. 113+31.23
 Δ = 12° 49' 51" (RT)
 D = 01° 45' 00"
 T = 368.15'
 L = 733.22'
 R = 3,274.17'
 P.C. STA. 109+63.08
 P.T. STA. 116+96.30

SW. CORNER GOVERNMENT LOT 1
 FND. PK NAIL
 1041714.157
 908338.542

END R/W PROJECT No. 89092-2505
 ITEM/SEGMENT No. 2288611
 STA. 126+67.42 S.R. 714 (S.E. MONTEREY RD.)
 STA. 113+70.75 S.R. A-1-A (E. OCEAN BLVD.)
 N 1041688.352
 E 908378.358

E. 1/4 COR. SEC. 3-38-41
 MON. NOT FND. (CALC.)
 N 1041708.648
 E 909657.279

NOT A SURVEY

SEE SHEET ONE FOR LEGEND AND GENERAL NOTES S.R. 714 (MONTEREY ROAD) FROM S.R. 5 (U.S. 1) TO S.R. A-1-A (E. OCEAN BLVD.)

RIGHT OF WAY KEY MAP

FLORIDA DEPARTMENT OF TRANSPORTATION
RIGHT OF WAY MAPPING

APPROVED BY	DATE	BY	DATE
	08-31-00	PRELIM WALKER	05-05-99
DISTRICT RIGHT OF WAY SURVEYOR		FINAL MORAYA	09-16-99
		CHECKED WALKER	09-30-99
REVISION	BY	DATE	REVISION

F.A. PROJ. NO. N/A SECTION 89092-2505
 STATE ROAD NO. 714 MARTIN COUNTY

MAPS PREPARED BY
 F.D.O.T. DISTRICT 4
 W.P.I. NO. 4116331
 ITEM/SEGMENT No. 2288611
 FIELD BOOK NO. 15
 4202643, 4202644, E.F.B. 228861A RC
 SCALE: 1" = 400'
 SHEET 2 OF 12