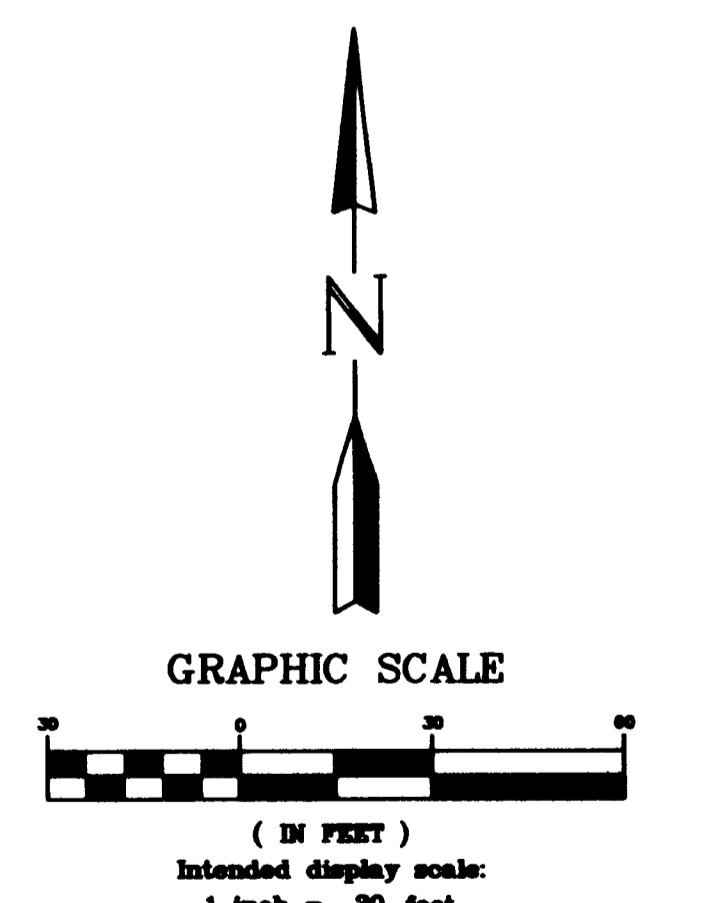
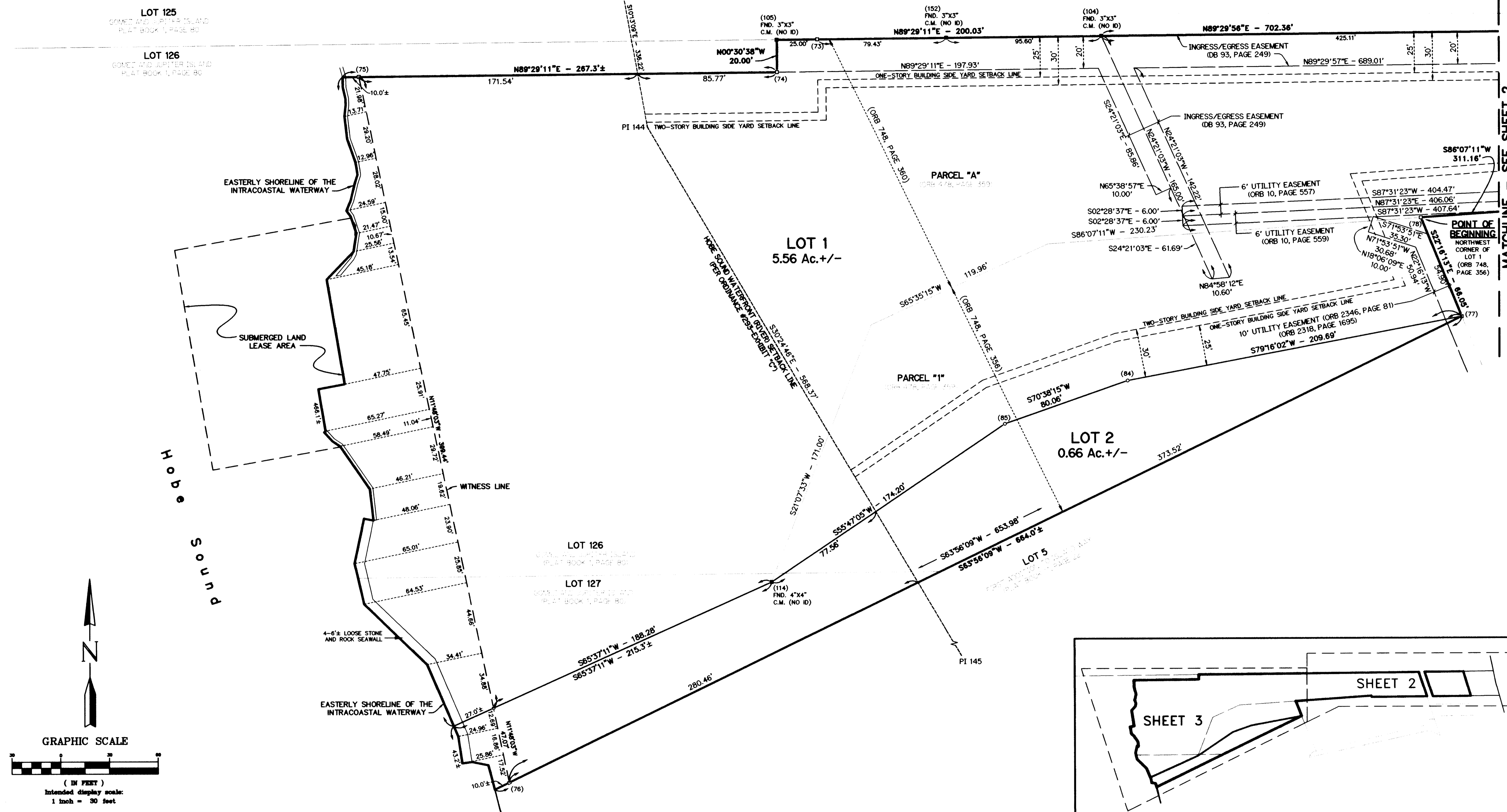


# PLAT OF UNDERWOOD

BEING A REPLAT OF PORTIONS OF LOTS 126 AND 127, GOMEZ GRANT AND JUPITER ISLAND, RECORDED IN PLAT BOOK 1 AT PAGE 80 OF THE PUBLIC RECORDS OF PALM BEACH (NOW MARTIN) COUNTY, FLORIDA. CONTAINING 6.59 ACRES, MORE OR LESS TOWN OF JUPITER ISLAND, MARTIN COUNTY, FLORIDA

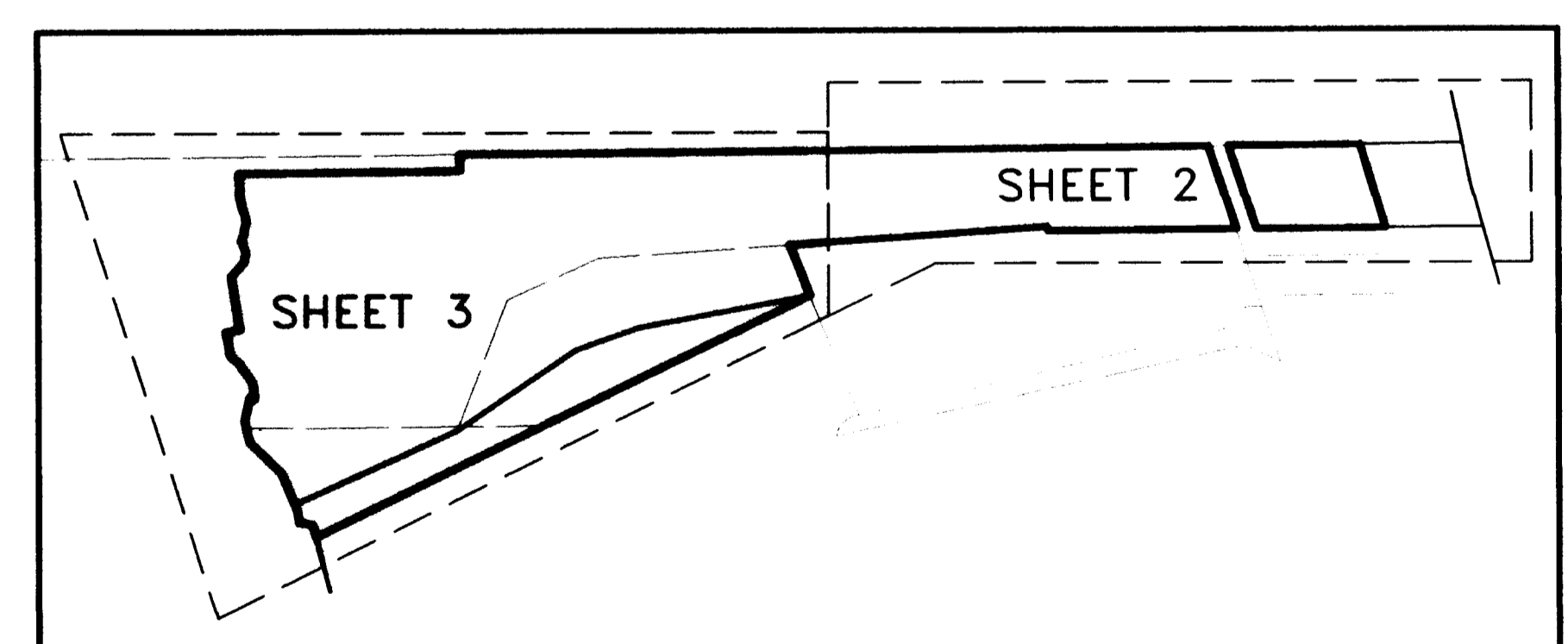


**LEGEND**

- (XXXX) = POINT NUMBER REPRESENTING A COORDINATE PAIR
- C.M. = CONCRETE MONUMENT
- DE = DRAINAGE EASEMENT
- UE = UTILITY EASEMENT
- FND. = FOUND
- I.P. = IRON PIPE
- I.R. = IRON ROD
- LB = SURVEY AND MAPPING BUSINESS
- NAVDB8 = NORTH AMERICAN VERTICAL DATUM OF 1988
- ORB = OFFICIAL RECORDS BOOK
- PI = POINT OF INTERSECTION
- = SET 4"x4" CONCRETE MONUMENT WITH 2" ALUMINUM CAP STAMPED "GCY, INC. LB 4108 PRM"
- = SET 3/4" IRON PIPE AND CAP STAMPED "GCY, INC. LB 4108"
- PRM = PERMANENT REFERENCE MONUMENT

**SURVEYOR'S NOTES**

- 1) **NOTICE:**  
THIS PLAT, AS RECORDED IN ITS GRAPHIC FORM, IS THE OFFICIAL DEPICTION OF THE SUBDIVIDED LANDS DESCRIBED HEREIN AND WILL IN NO CIRCUMSTANCES BE SUPPLANTED IN AUTHORITY BY ANY OTHER GRAPHIC OR DIGITAL FORM OF THE PLAT. THERE MAY BE ADDITIONAL RESTRICTIONS THAT ARE NOT RECORDED ON THIS PLAT THAT MAY BE FOUND IN THE PUBLIC RECORDS OF MARTIN COUNTY, FLORIDA.
- 2) BEARINGS SHOWN HEREON ARE REFERENCED TO THE STATE PLANE COORDINATE SYSTEM, FLORIDA EAST ZONE, NORTH AMERICAN DATUM OF 1983, ADJUSTMENT OF 2007 AND ARE FURTHER REFERENCED TO THE NORTH LOT LINE OF LOT 126, PLAT OF GOMEZ AND JUPITER ISLAND, RECORDED IN PLAT BOOK 1, PAGE 80, OF THE PUBLIC RECORDS OF PALM BEACH (NOW MARTIN) COUNTY, FLORIDA. SAID LINE BEARS NORTH 89°29'56" EAST, AND ALL OTHERS ARE RELATIVE THERETO.
- 3) EASEMENTS CREATED BY THIS PLAT ARE NON-EXCLUSIVE.



**SHEET INDEX**  
(INTENDED DISPLAY SCALE: 1"=200')

**GCY**  
INCORPORATED  
PROFESSIONAL SURVEYORS AND MAPPERS  
CERTIFICATE OF AUTHORIZATION LB 4108

CORPORATE OFFICE: TALLAHASSEE OFFICE  
PO BOX 1469 • 1505 SW MARTIN HWY. 1979-2 MARYLAND CIRCLE  
PALM CITY, FL 34991 TALLAHASSEE, FL 32303  
(800) 386-1066 (850) 536-8455