

KOHL'S

Being a replat of a portion of Tract "F" Treasure Coast Square A P.U.D. (C)
Plat Book 10, Page 100, Public Records of Martin County, Florida
also being a portion of Section 19, Township 37 South, Range 41 East
Martin County, Florida

CLERK'S RECORDING CERTIFICATE

I, MARSHA EWING, CLERK OF THE CIRCUIT COURT OF MARTIN COUNTY, FLORIDA, HEREBY CERTIFY THAT THIS PLAT WAS FILED FOR RECORD IN

PLAT BOOK _____, PAGE _____,
MARTIN COUNTY, FLORIDA, PUBLIC RECORDS THIS

DAY OF _____, 2009.

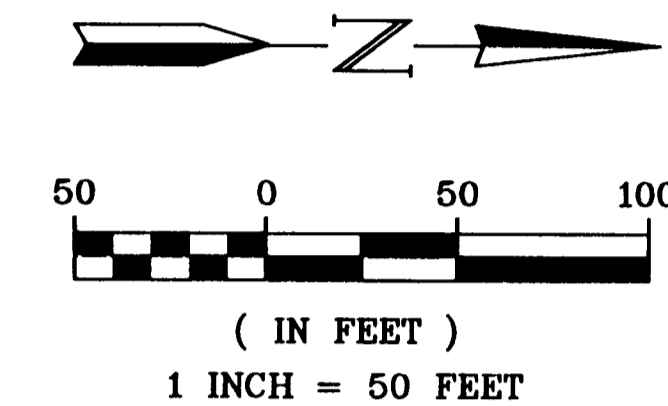
MARSHA EWING, CLERK OF THE CIRCUIT COURT
MARTIN COUNTY, FLORIDA.

FILE NUMBER _____ BY _____
DEPUTY CLERK

SUBDIVISION PARCEL CONTROL NUMBER

Legend

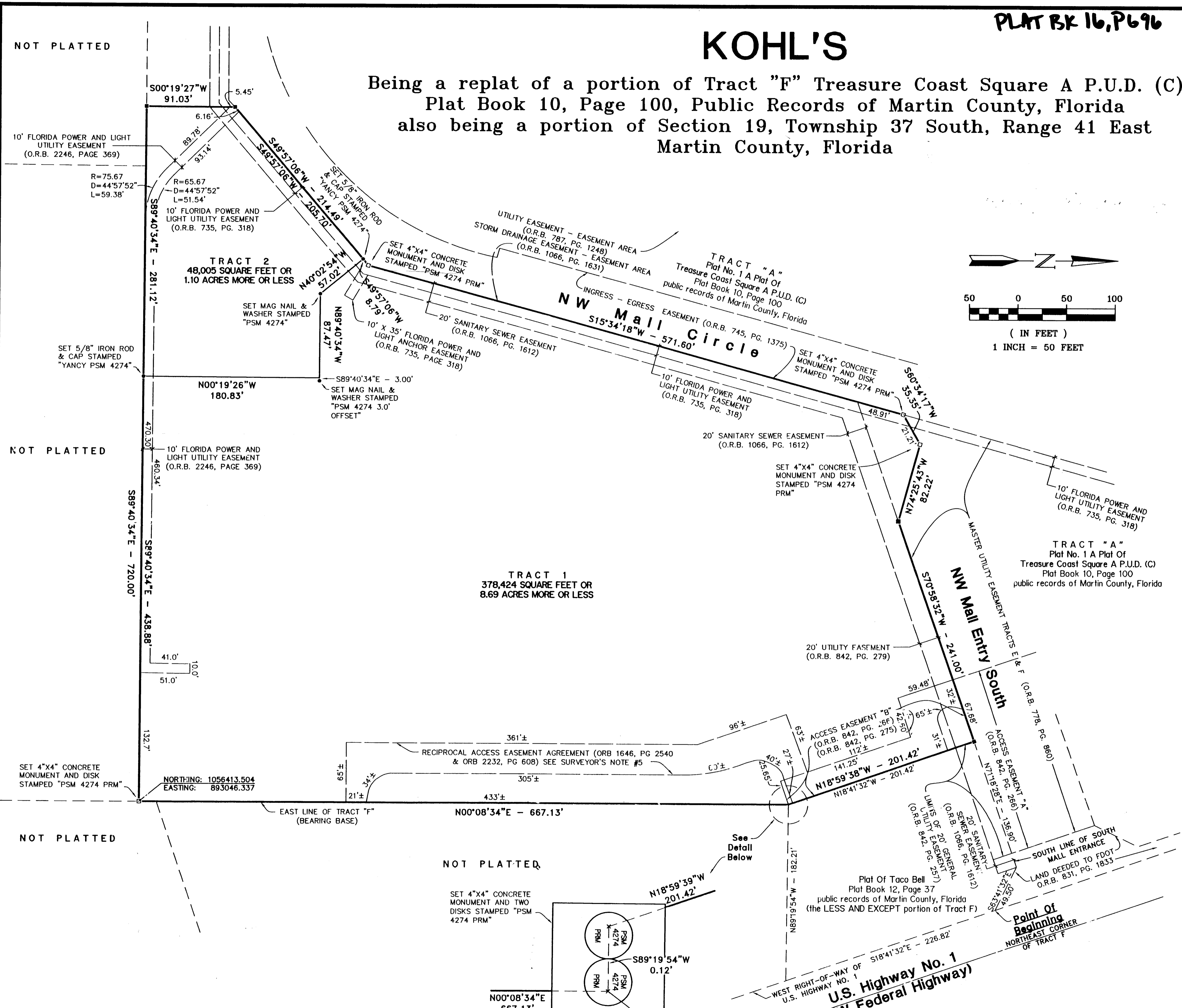
- O.R.B. = OFFICIAL RECORDS BOOK
- PG. = PAGE
- PRM = PERMANENT REFERENCE MONUMENT
- PSM = PROFESSIONAL SURVEYOR AND MAPPER
- FDOT = FLORIDA DEPARTMENT OF TRANSPORTATION
- = FOUND 3-1/2" X 3-1/2" CONCRETE MONUMENT AND DISK STAMPED "PRM 4049"
- R = RADIUS
- D = CENTRAL ANGLE
- L = LENGTH OF CURVE



NOT PLATTED

NOT PLATTED

NOT PLATTED



Surveyor's Notes

- 1) This plat, as recorded in its original form in the public records, is the official depiction of the subdivided lands described hereon and will in no circumstances be supplanted in authority by any other form of this plat, whether graphic or digital.
- 2) There may be additional restrictions that are not recorded on this plat that may be found in the public records of this county.
- 3) The Bearing Base for this plat is Grid; A monumented line being the East line of Tract "F" as shown hereon. Said line bears N00°08'34"E.
- 4) The State Plane Coordinates as shown on sheet two were established by using National Geodetic Survey monuments GCY D20 and GCY D21 based upon the North American Datum of 1983 (2007 adjustment).
- 5) The Reciprocal Access Easement Agreement as recorded in Official Records Book 1646, Page 2540 and modified in Official Records Book 2232, Page 608 is a graphic depiction only, recorded without dimensions. The dimensions as shown are scaled dimensions by this surveyor.

NOT PLATTED

