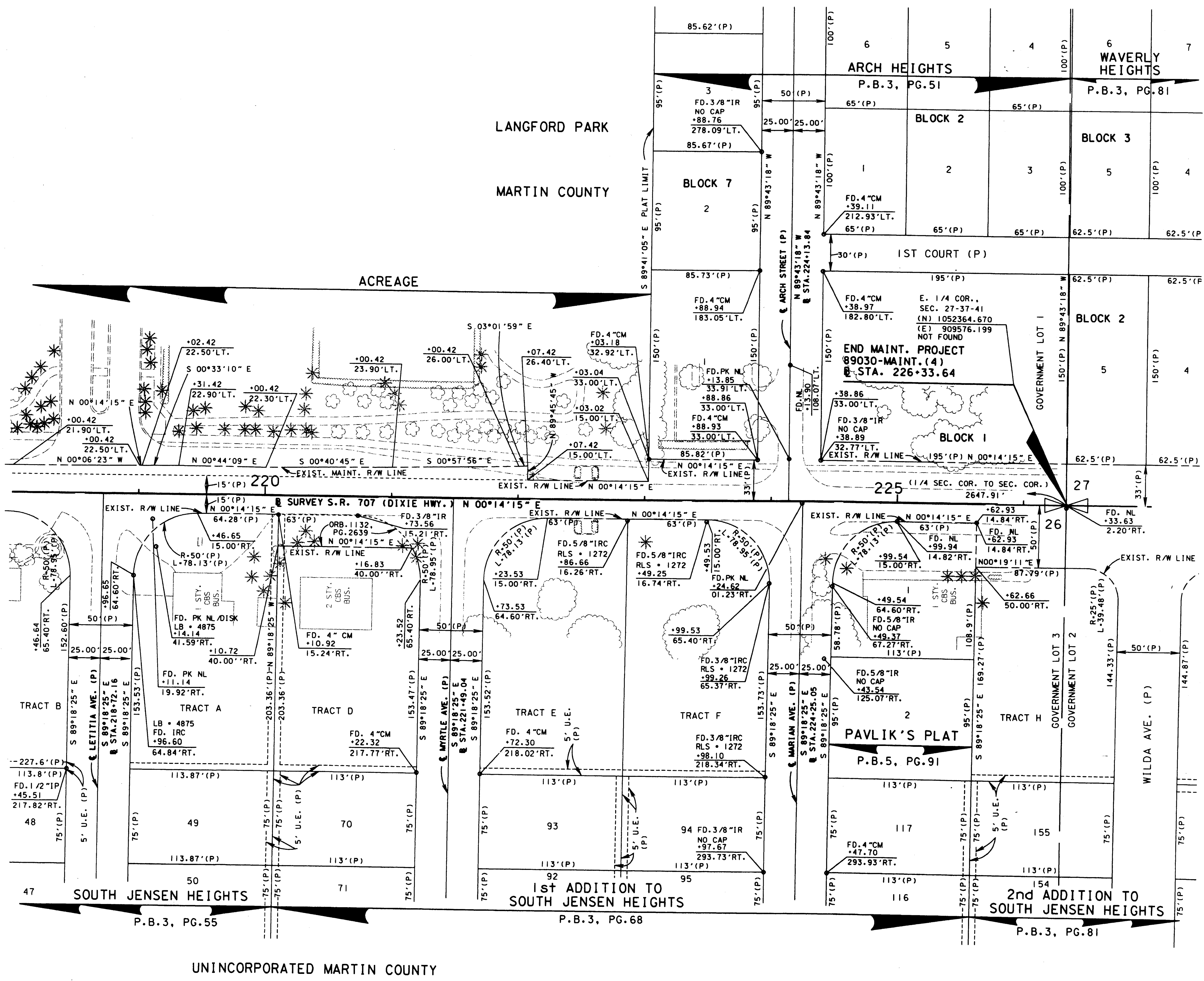


This Maintenance Map when recorded is an instrument of conveyance, transferring in accordance with the Florida Statutes 337.29 (3) all right, title, and interest of the Florida Department of Transportation in the road, street, highway, set forth on this map.
 Martin County, Florida
 Recorded in the Public Records of Martin County, Florida, this ___ day of _____, A.D. 20___, in Plat Book _____, Page _____.

SEC. 26, TWP. 37 S., RGE. 41 E.
 SEC. 27, TWP. 37 S., RGE. 41 E.

SCALE: 1" = 40'

Clerk of the Circuit Court
 Martin County, Florida



SEE SHEET 1 FOR LEGEND AND GENERAL NOTES

STATE ROAD 707 (DIXIE HWY.) FROM SAVANNAH ROAD TO ARCH STREET

MAINTENANCE MAP

FLORIDA DEPARTMENT OF TRANSPORTATION
 RIGHT OF WAY MAPPING

APPROVED BY: *J. Smith* DATE: 5/12/03
 DISTRICT RIGHT OF WAY SURVEYOR

REVISION	BY	DATE	REVISION	BY	DATE

FED. PROJ. NO. N/A SECTION 89030-MAINT.(4)
 STATE ROAD 707 (DIXIE HWY.) MARTIN COUNTY

MAPS PREPARED BY: LB-696 KIMLEY-HORN AND ASSOCIATES
 FIELD BOOK NO.: SEE SHEET 1
 W.P.I. No. N/A SCALE: 1" = 40'
 ITEM/SEGMENT NO. 4035911 SHEET 12 OF 12