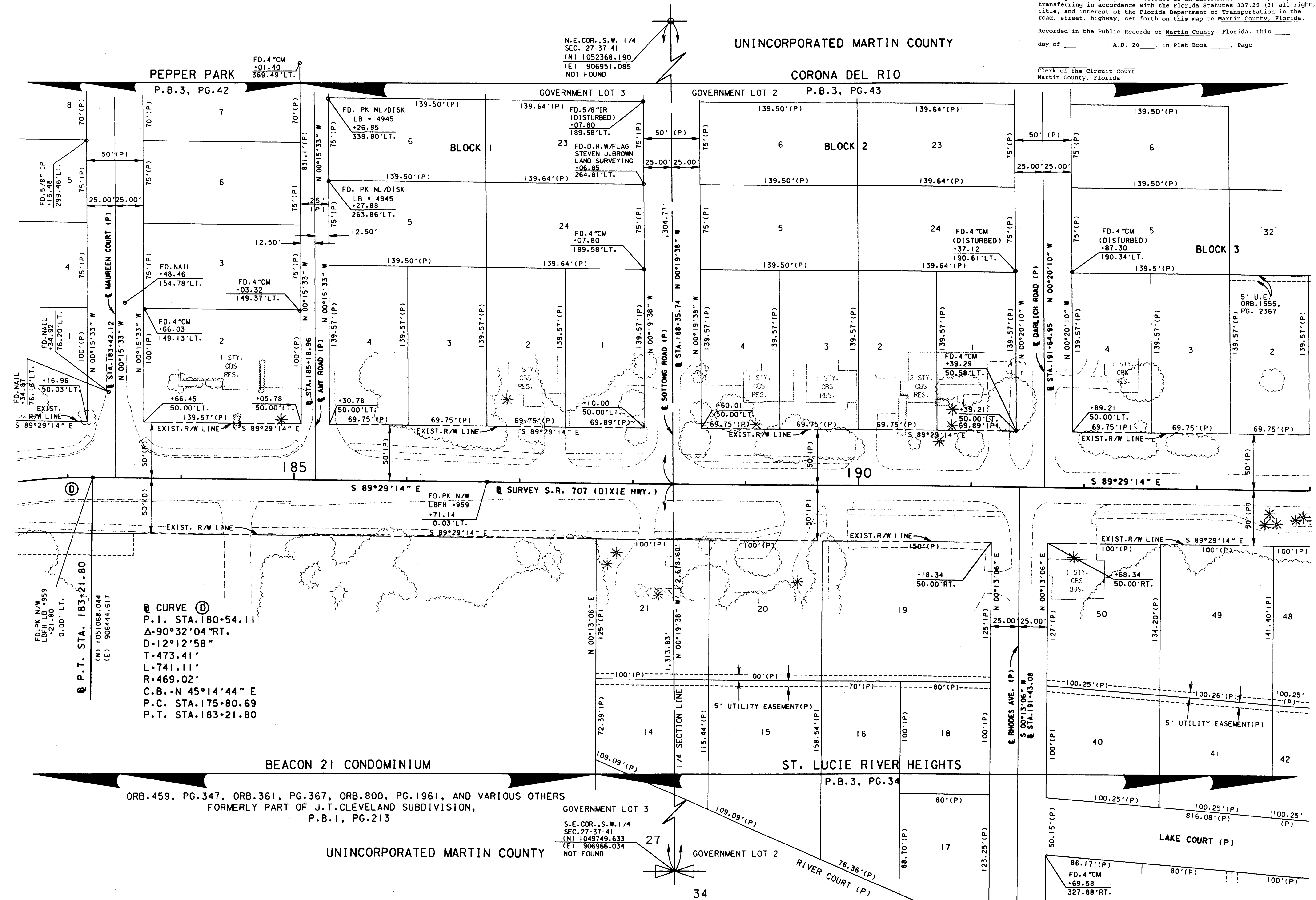


This Right of Way Map when recorded is an instrument of conveyance, transferring in accordance with the Florida Statutes 337.29 (3) all right, title, and interest of the Florida Department of Transportation in the road, street, highway, set forth on this map to Martin County, Florida.

Recorded in the Public Records of Martin County, Florida, this day of _____, A.D. 20____, in Plat Book _____, Page _____.

Clerk of the Circuit Court
Martin County, Florida

SEC. 27, TWP. 37 S., RGE. 41 E.
SCALE: 1" = 40'



ⓐ CURVE ⓐ
P.I. STA. 180+54.11
Δ=90°32'04" RT.
D=12°12'58"
T=473.41'
L=741.11'
R=469.02'
C.B.=N 45°14'44" E
P.C. STA. 175+80.69
P.T. STA. 183+21.80

ORB. 459, PG. 347, ORB. 361, PG. 367, ORB. 800, PG. 1961, AND VARIOUS OTHERS
FORMERLY PART OF J.T. CLEVELAND SUBDIVISION,
P.B. 1, PG. 213

SEE SHEET 1 FOR LEGEND AND GENERAL NOTES

STATE ROAD 707 (DIXIE HWY.) FROM SAVANNAH ROAD TO ARCH STREET

MAINTENANCE MAP	FLORIDA DEPARTMENT OF TRANSPORTATION RIGHT OF WAY MAPPING	APPROVED BY <i>J. Smith</i> DATE 5/12/03	BY DATE	FED. PROJ. NO. N/A	SECTION 89030-MAINT. (4)	MAPS PREPARED BY LB-696 KIMLEY-HORN AND ASSOCIATES	FIELD BOOK NO. 15
		DISTRICT RIGHT OF WAY SURVEYOR	PRELIM L. CEFOLIA 8/17/01	STATE ROAD 707 (DIXIE HWY.) MARTIN COUNTY	W.P. 1. No. N/A	SCALE: 1" = 40'	SEE SHEET 1
		REVISION BY DATE	CHECKED J. EDGAR 4/07/03	ITEM/SEGMENT NO. 4035911	SHEET 9 OF 12		