

N.E. COR., S.W. 1/4  
 SEC. 28-37-41  
 (N) 1052381.681  
 (E) 901669.702

UNINCORPORATED MARTIN COUNTY

TANGENT DATA	
LINE	BEARING
T1	N 00°08'23" W
T2	S 89°25'24" E

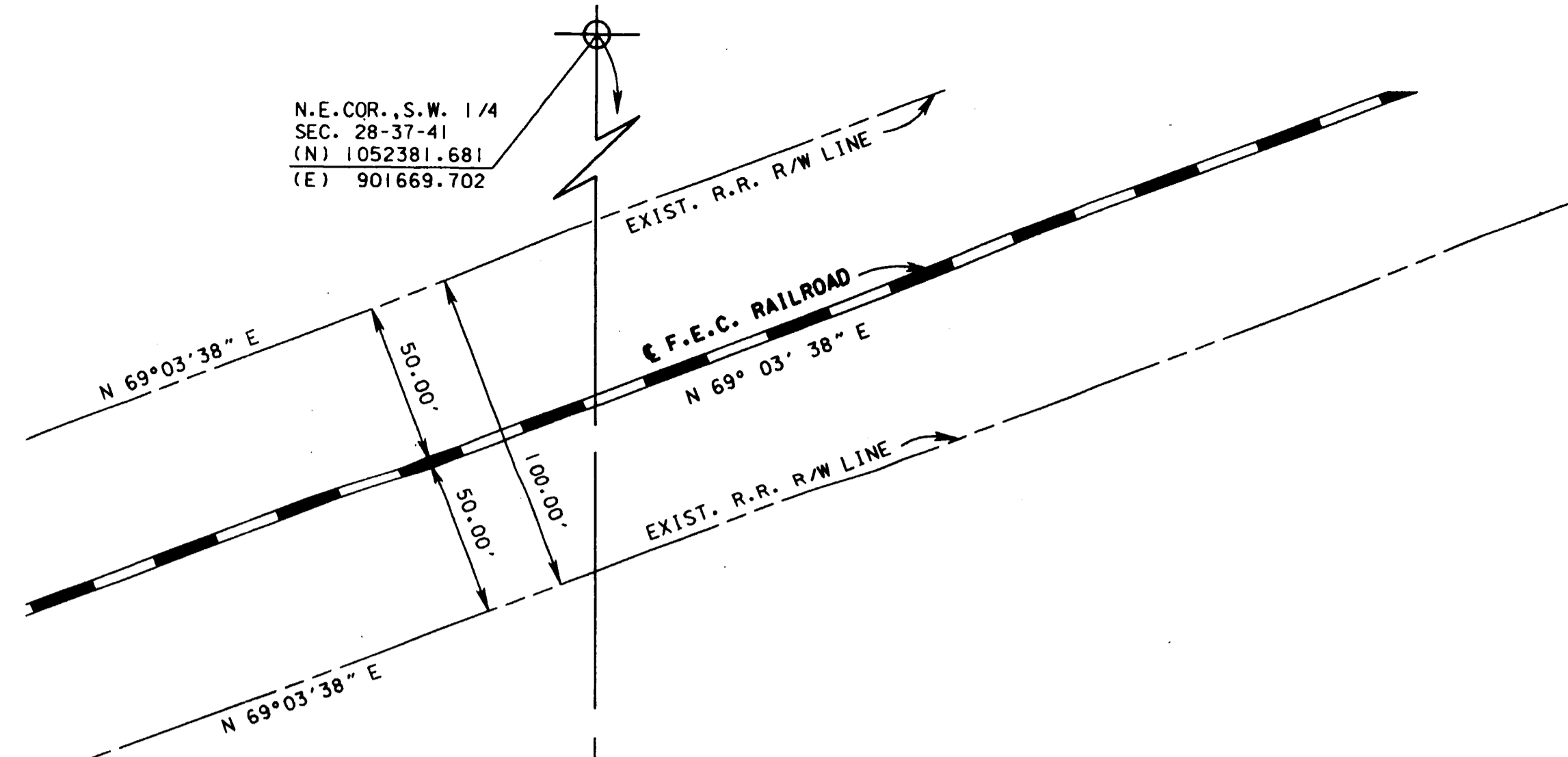
This Right of Way Map when recorded is an instrument of conveyance, transferring in accordance with the Florida Statutes 337.29 (3) all right, title, and interest of the Florida Department of Transportation in the road, street, highway, set forth on this map to Martin County, Florida.

Recorded in the Public Records of Martin County, Florida, this day of \_\_\_\_\_, A.D. 20\_\_\_\_, in Plat Book \_\_\_\_\_, Page \_\_\_\_\_.

Clerk of the Circuit Court  
 Martin County, Florida

SEC. 28, TWP. 37 S., RGE. 41 E.  
 SEC. 33, TWP. 37 S., RGE. 41 E.

SCALE 1" = 40'



ACREAGE

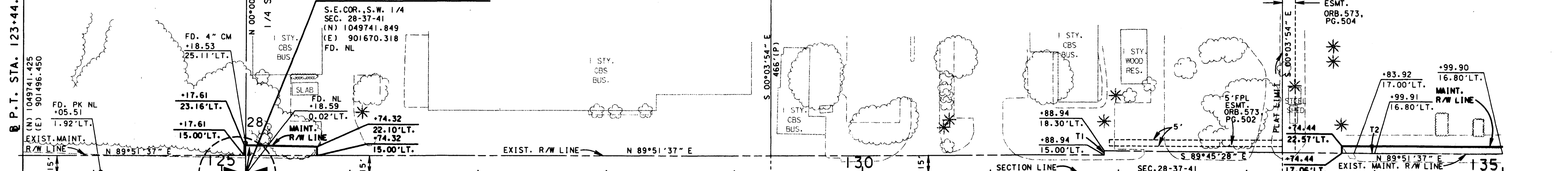
GLUTSCH SUBDIVISION  
 P.B. 1, PG. 213

ACREAGE

P.T. STA. 123+44.71

P.O.T. STA. 125+18.58

LOT 12



ACREAGE

BLOCK 1

BLOCK 2

RIO ST. LUCIE SUBDIVISION  
 P.B. 4, PG. 99

RIVER TERRACE  
 P.B. 2, PG. 59A

STUART AVENUE (P)

STUART AVENUE (P)

UNINCORPORATED MARTIN COUNTY

GOVT. LOT 3

GOVT. LOT 2

SEE SHEET 1 FOR LEGEND AND GENERAL NOTES

STATE ROAD 707 (DIXIE HWY.)  
 FROM SAVANNAH ROAD TO ARCH STREET

MAINTENANCE MAP

FLORIDA DEPARTMENT OF TRANSPORTATION  
 RIGHT OF WAY MAPPING

APPROVED BY: *[Signature]* DATE: 5/12/03  
 DISTRICT RIGHT OF WAY SURVEYOR

REVISION	BY	DATE	REVISION	BY	DATE

BY	DATE
PRELIM L. CEFOLIA	8/17/01
FINAL L. CEFOLIA	4/03/03
CHECKED J. EDGAR	4/07/03

FED. PROJ. NO. N/A

SECTION 89030-MAINT. (4)

STATE ROAD 707 (DIXIE HWY.) MARTIN COUNTY

MAPS PREPARED BY	LB#	FIELD BOOK NO.'S
KIMLEY-HORN AND ASSOCIATES	696	SEE SHEET 1
W.P.I. No.	N/A	SCALE: 1" = 40'

SHEET 4 OF 12