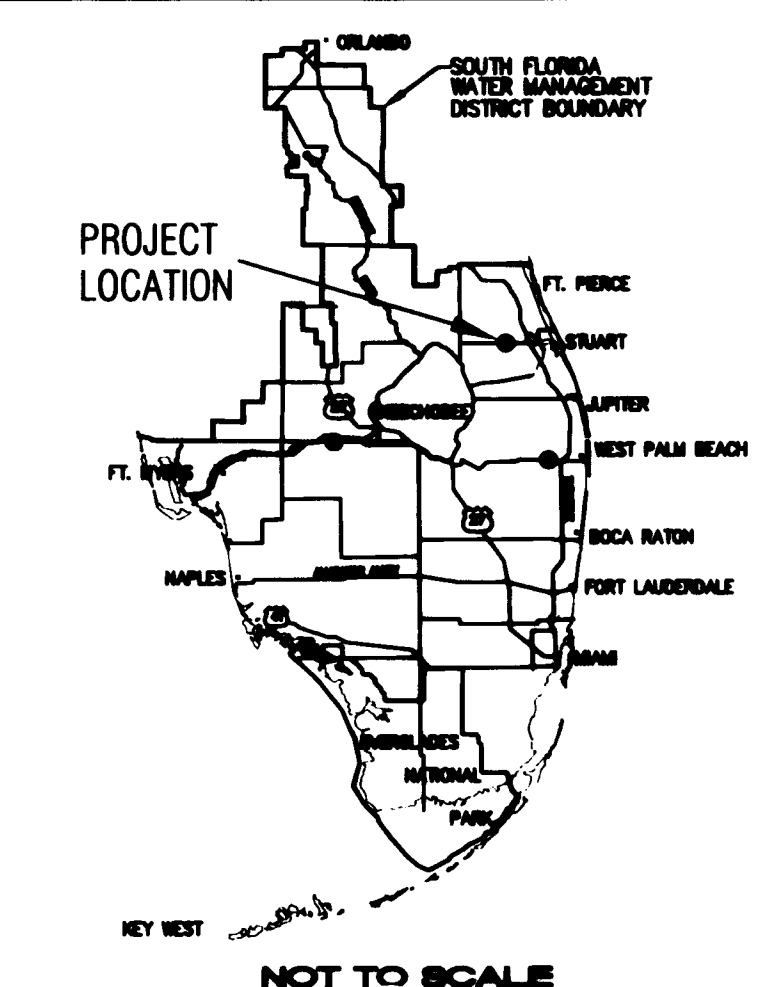


SOUTH FLORIDA WATER MANAGEMENT DISTRICT LAND ACQUISITION DEPARTMENT - SURVEY SECTION

BOUNDARY SURVEY / RIGHT OF WAY MAP

PORTION OF C-23 CANAL

SECTIONS 35 AND 36, TOWNSHIP 37 SOUTH, RANGE 39 EAST
SECTIONS 31, 32, AND 33, TOWNSHIP 37 SOUTH, RANGE 40 EAST
SECTIONS 1 AND 2, TOWNSHIP 38 SOUTH, RANGE 39 EAST
AND SECTIONS 4, 5, AND 6, TOWNSHIP 38 SOUTH, RANGE 40 EAST
MARTIN AND ST. LUCIE COUNTIES, FLORIDA



FILED IN PLAT BOOK 16
MARTIN COUNTY, FL
2010 JAN 08 AM 10:08
BY: [Signature]

SURVEYOR'S NOTES

1. THE BOUNDARY SURVEY SHOWN HEREON WAS PREPARED UTILIZING THE S.F.W.M.D. LAND ACQUISITION REPORT, DATED DECEMBER 5, 2008, PREPARED BY MIKE DEBISH AND ASSOCIATED THEREWITH. THE LOCATION OF THE RIGHT-OF-WAY LINES SHOWN HEREON ARE BASED UPON THE "CANAL C-23 RIGHT OF WAY MAP", RECORDED IN PLAT BOOK 1, PAGE 1 OF THE PUBLIC RECORDS OF MARTIN COUNTY, FLORIDA. THE RIGHT-OF-WAY LINES SHOWN ON SAID MAP, WERE MONUMENTED IN 1951 AND ARE SUPPORTED BY FIELD NOTES SHOWN WITHIN S.F.W.M.D. FIELD BOOKS "C-23 5A", "C-23 5B", AND "C-23 5C". THE LEGAL DESCRIPTIONS SHOWN ON SHEET 2 OF 13 ARE INCLUDED WITHIN THE AFORESAID LAND ACQUISITION REPORT, BUT DIFFER FROM THE "C-23 RIGHT OF WAY MAP", BECAUSE THEY DO NOT CREATE A 400 FOOT WIDE CORRIDOR, WHICH WAS THE INTENT OF THE DEEDS. SAID DEEDS EXTEND PAST THE PROJECT LIMITS. SEE SHEET 2 FOR A COMPARISON OF THE DEED CORRIDOR WIDTHS.

THE SECTION CORNERS SHOWN HEREON ARE BASED UPON S.F.W.M.D. FIELD BOOK "C-23 5C". THE ANGLES AND DISTANCES OF TRAVERSE PERFORMED IN 1959 WERE HELD TRUE AND THIS TRAVERSE POSITION WAS PLACED RELATIVE TO MONUMENTS "7.C.E. 1447", "7.C.E. 1448", "7.C.E. 1449", "7.C.E. 1450", AND "7.C.E. 1455". NO SECTION CORNERS WERE RECOVERED DURING THIS SURVEY. THE SECTION LINES SHOWN HEREON ARE THEREFORE APPROXIMATE.

THE IMPROVEMENTS SHOWN HEREON ARE LIMITED TO THE AREAS BETWEEN THE TOP OF BANK OF THE C-23 AND 10 FEET NORTH OR SOUTH OF THE RIGHT-OF-WAY LINES. THE SPECIFIC SCOPE OF THE LOCATIONS IS OUTLINED WITHIN WORK ORDER 4800000945-WOOD. THERE ARE ADDITIONAL IMPROVEMENTS THAT WERE NOT LOCATED AT THE CLIENTS REQUEST. THE IMPROVEMENTS SHOWN HEREON WERE LOCATED USING G.P.S., R.T.K. PROCEDURES AND TRADITIONAL SURVEY PROCEDURES.

2. THE COORDINATES, LATITUDES, AND LONGITUDES SHOWN HEREON REFER TO THE FLORIDA STATE PLANE COORDINATE SYSTEM, TRANSVERSE MERCATOR PROJECTION, EAST ZONE, NORTH AMERICAN DATUM OF 1983 (NAD83/2007 ADJUSTMENT) AS PUBLISHED BY THE NATIONAL GEODETIC SURVEY. THE BASIS OF BEARING FOR THIS SURVEY IS S 89°50'18" E BETWEEN MONUMENTS "CANAL C231" AND "CANAL C232" DESCRIBED AS FOLLOWS:

"CANAL C231"

THE STATION IS DESCRIBED BY SOUTH FLORIDA WATER MANAGEMENT DISTRICT AS A SURVEY DISK STAMPED "CANAL C231 1994". THE STATION IS ABOUT 7.0 MILES (11.3 KM) WEST OF STUART IN SECTION 32, TOWNSHIP 37 SOUTH, RANGE 40 EAST. TO REACH THE STATION FROM THE INTERSECTION OF SAVAGE BOULEVARD AND SOUTHWEST PORT ST. LUCIE BOULEVARD IN PORT ST. LUCIE, GO SOUTH ON SOUTHWEST PORT ST. LUCIE BOULEVARD FOR 3.5 MILES (5.6 KM) TO THE INTERSECTION OF BECKER ROAD. TURN LEFT ON BECKER ROAD AND GO EAST FOR 2.1 MILES (3.4 KM) TO THE JUNCTION OF SOUTHWEST FLINTSTONE DRIVE ON THE RIGHT. TURN RIGHT ON SOUTHWEST FLINTSTONE DRIVE AND GO SOUTH FOR 0.2 MILES (0.3 KM) TO THE INTERSECTION OF BRADSHAW CIRCLE. CONTINUE SOUTH ON SOUTHWEST FLINTSTONE DRIVE FOR 0.05 MILES (0.08) TO A LOCKED GATE, PASSING THROUGH THE GATE. TURN RIGHT ON THE DIM ROAD AND GO WEST FOR 0.1 MILES (0.2 KM) TO STRUCTURE 97. CONTINUE WEST ON THE DIM ROAD FOR 0.5 MILES (0.8 KM) TO THE STATION IN THE CENTER OF DIM ROAD. LOCATED 92.6 FT (28.2 M) EAST OF A METAL CULVERT, 69.4 FT (21.2 M) SOUTH OF A 3-INCH WOOD FENCE POST WITH A PLACQUE AND 14.1 FT (4.3 M) NORTH OF A METAL WITNESS POST.

N = 1,044,547.95
E = 867,797.18

"CANAL C232"

THE STATION IS DESCRIBED BY SOUTH FLORIDA WATER MANAGEMENT DISTRICT AS A SURVEY DISK STAMPED "CANAL C232 1994". THE STATION IS ABOUT 7.0 MILES (11.3 KM) WEST OF STUART IN SECTION 32, TOWNSHIP 37 SOUTH, RANGE 40 EAST. TO REACH THE STATION FROM THE INTERSECTION OF SAVAGE BOULEVARD AND SOUTHWEST PORT ST. LUCIE BOULEVARD IN PORT ST. LUCIE, GO SOUTH ON SOUTHWEST PORT ST. LUCIE BOULEVARD FOR 3.5 MILES (5.6 KM) TO THE INTERSECTION OF BECKER ROAD. TURN LEFT ON BECKER ROAD AND GO EAST FOR 2.1 MILES (3.4 KM) TO THE JUNCTION OF SOUTHWEST FLINTSTONE DRIVE ON THE RIGHT. TURN RIGHT ON SOUTHWEST FLINTSTONE DRIVE AND GO SOUTH FOR 0.2 MILES (0.3 KM) TO THE INTERSECTION OF BRADSHAW CIRCLE. CONTINUE SOUTH ON SOUTHWEST FLINTSTONE DRIVE FOR 0.05 MILES (0.08) TO A LOCKED GATE, PASSING THROUGH THE GATE. TURN RIGHT ON THE DIM ROAD AND GO WEST FOR 0.1 MILES (0.2 KM) TO STRUCTURE 97. CONTINUE WEST ON THE DIM ROAD FOR 1.2 MILES (1.9 KM) TO THE STATION IN THE CENTER OF DIM ROAD. LOCATED 57.0 FT (17.4 M) SOUTH OF A 3-INCH WOOD FENCE POST 4.0 FT (1.2 M) HIGH WITH A PLACQUE AND 15.8 FT (4.8 M) NORTH OF A METAL WITNESS POST.

N = 1,044,557.95
E = 864,253.64

"SAID COORDINATES WERE ESTABLISHED FROM DUAL MEASUREMENTS FROM BASE STATIONS LOCATED ON CANAL C231, CANAL C232 (DESCRIBED ABOVE) AND I-95 86 A18. ADDITIONAL BASELINE MEASUREMENTS WERE OBTAINED UTILIZING REAL TIME NETWORKS. SAID BASELINES WERE PROCESSED USING TRIMBLE GEOMATICS OFFICE.

"195 85 A18"

DESCRIBED BY FLORIDA DEPARTMENT OF TRANSPORTATION 1985 STATION IS LOCATED ABOUT 11-1/4 MILES NORTHWEST OF STUART AND ABOUT 4-1/4 MILES NORTHWEST OF INTERSECTION OF INTERSTATE ROUTE 95 WITH MARTIN-ST. LUCIE COUNTY LINE IN INTERSTATE ROUTE 95 RIGHT-OF-WAY. TO REACH THE STATION FROM INTERSTATE ROUTE 95 AND MARTIN-ST. LUCIE COUNTY LINE, GO NORTH ON INTERSTATE ROUTE 95 FOR 4.45 MILES TO INTERSTATE ROUTE 95 BRIDGE OVER GATLIN BOULEVARD AND STATION. STATION MARK IS A FLORIDA DEPARTMENT OF TRANSPORTATION BRASS DISK, STAMPED "1 95 85 A 18", SET IN TOP OF A ROUND CONCRETE MONUMENT THAT IS 6 INCHES BELOW GROUND. IT IS 5.5 FEET NORTH OF A WITNESS SIGN ON HEADWALL OF GATLIN BOULEVARD, 34.5 FEET EAST OF NORTHEAST END OF SOUTHWEST LANE BRIDGE ABUTMENT AND 38.5 FEET NORTHWEST OF NORTHWEST END OF NORTHWIND LANE BRIDGE ABUTMENT.

N = 1,085,833.15
E = 843,855.95

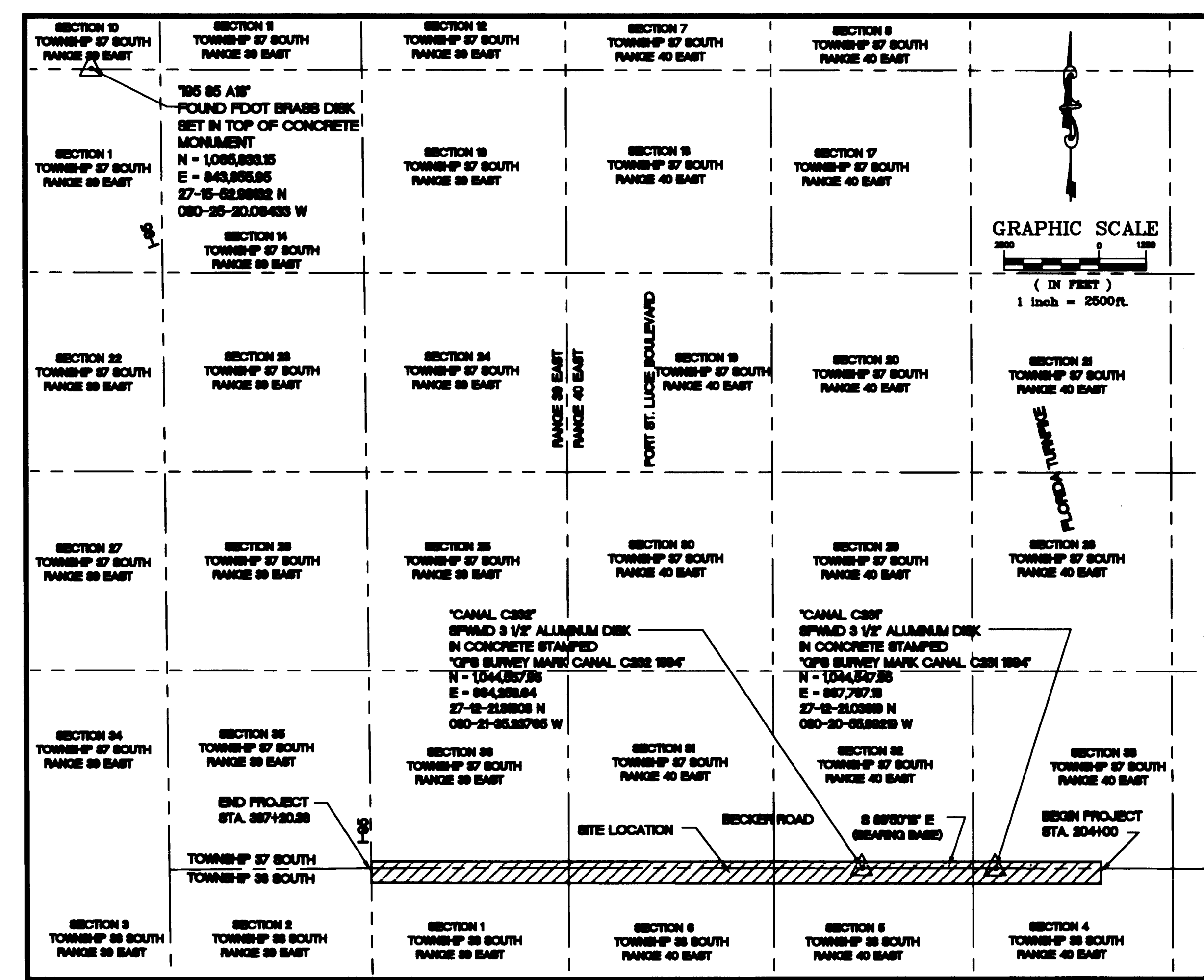
3. THE BASELINE SHOWN HEREON WAS CREATED 200' SOUTH OF AND PARALLEL WITH THE NORTH RIGHT-OF-WAY LINE OF THE C-23 CANAL AS SHOWN ON THE ARMY CORPS OF ENGINEERS AS-BUILT DRAWING "CANAL C23 CONTROL", DATED NOVEMBER 18, 1964, AS SUPPLIED BY THE SOUTH FLORIDA WATER MANAGEMENT DISTRICT. THE STATIONING SHOWN HEREON IS ACCORDING TO SAID AS-BUILT DRAWING.

4. THE MARGERY OF ST. LUCIE COUNTY SHOWN HEREON WAS PURCHASED FROM THE ST. LUCIE COUNTY PROPERTY APPRAISER IN 2009 AND THE MARGERY OF MARTIN COUNTY WAS OBTAINED FROM THE MARTIN COUNTY GIS WEBSITE AND IS NOT PART OF THIS SURVEY.

5. ALL MEASUREMENTS SHOWN HEREON ARE IN FEET AND DECIMALS.

6. ALL DISTANCES SHOWN HEREON ARE CALCULATED UNLESS OTHERWISE NOTED.

7. UNLESS IT BEARS THE SIGNATURE AND ORIGINAL RAISED SEAL OF A FLORIDA LICENSED SURVEYOR AND MAPPER, THIS DRAWING, SKETCH, PLAT OR MAPS ARE FOR INFORMATIONAL PURPOSE ONLY AND IS NOT VALID.



LOCATION MAP

1" = 2500'

THIS MAP IS INTENDED TO BE DISPLAYED AT A SCALE OF 1" = 2500 OR SMALLER

INDEX OF SHEETS

SHEET S1	COVER SHEET
SHEET S2	LEGAL DESCRIPTION AND DEED EXHIBIT
SHEET S3	PROJECT CONTROL
SHEETS S4-S5	SHEET LAYOUT AND FOUND MONUMENTATION
SHEETS S6-S12	PLAN SHEETS
SHEET 13	DETAIL SHEET

CREECH ENGINEERS, INC.
CIVILIZATION ENGINEERED
1562 PARK LANE SOUTH, SUITE 700, JUPITER, FLORIDA 33458 (561) 745-4485
OFFICES ALSO IN STUART, MELBOURNE AND TALLAHASSEE FL.
BOARD OF PROFESSIONAL ENGINEERS, CERTIFICATE OF AUTHORIZATION NUMBER 8330
PROFESSIONAL SURVEYORS AND MAPPERS, LICENSED CERTIFICATE NO. LB-000790

LEGEND

LB	LICENSED BUSINESS	—○—	WOOD FENCE
N.	NORTHING	—○—	CHAIN LINK FENCE
E.	EASTING	—x—x—	BARBED WIRE FENCE
NAD	NORTH AMERICAN DATUM	—x—x—	GUY ANCHOR
F.D.O.T.	FLORIDA DEPARTMENT OF TRANSPORTATION	—○—	SIGN/POST (AS NOTED)
S.F.W.M.D.	SOUTH FLORIDA WATER MANAGEMENT DISTRICT	—○—	OVERHEAD POWER LINE
SEC.	SECTION	—○—	WOOD POWER POLE
TYP.	TYPICAL	—○—	GUARDRAIL
(M)	MILE	—○—	STORM DRAIN
(KM)	KILOMETER	—○—	ELECTRIC HANDHOLE
(M)	METER	—○—	WELL
R/W	RIGHT-OF-WAY	—○—	TREELINE
USACOE	UNITED STATES ARMY CORPS OF ENGINEERS	—○—	PINE TREE
G.P.S.	GLOBAL POSITIONING SYSTEM	—○—	OAK TREE
R.T.K.	REAL TIME KINETIC	—○—	MYRTLE TREE
P.I.	POINT OF INTERSECTION	—○—	UNKNOWN TREES
STA.	STATION	—○—	MANGO TREE
I.D.	IDENTIFICATION	—○—	PALM TREE
F.C.E.	FLOOD CONTROL EVERGLADES	—○—	CITRUS TREE
(D)	DEED DATA	—○—	MAPLE TREE
(P)	PLAT DATA	—○—	ACACIA TREE
(C)	CALCULATED DATA	—○—	SEA GRAPES
P.B.	PLAT BOOK	—○—	FIGUE TREE
O.R.B.	OFFICIAL RECORDS BOOK	—○—	MAHOAGANY TREE
PG.	PAGE	—○—	SEA GRAPES
D.B.	DEED BOOK	—○—	FOUND 4"x4" CONCRETE MONUMENT
LAT.	LATITUDE	—○—	FOUND POURED CONCRETE MONUMENT WITH F.D.O.T. DISK STAMPED AS NOTED
LONG.	LONGITUDE	—○—	FOUND IRON ROD
DRAIN.	DRAINAGE	—○—	FOUND SHIP SPIKE
P.K.	PARKER KALON	—○—	FOUND BRASS DISK
CMP	CORRUGATED METAL PIPE	—○—	SET 4"x4" CONCRETE MONUMENT WITH S.F.W.M.D. DISK STAMPED "C-23 RW 2008, LB 6705"
PVC	POLYVINYL CHLORIDE PIPE	—○—	SET POURED CONCRETE MONUMENT WITH S.F.W.M.D. DISK STAMPED "C-23 RW 2008, LB 6705"
D.E.	DRAINAGE EASEMENT	—○—	SET 1"IRON PIPE WITH CAP STAMPED "TRAVERSE LB 6705"
U.E.	UTILITY EASEMENT	—○—	PK NAIL
ST.	SAINT	—○—	
P.O.B.	POINT OF BEGINNING	—○—	
G.I.S.	GEOGRAPHIC INFORMATION SYSTEM	—○—	
P.O.C.	POINT OF COMMENCEMENT	—○—	
P.L.D.	PLANNED UNIT DEVELOPMENT	—○—	
⊕	CENTERLINE	—○—	
PC	PROJECT CULVERT	—○—	
☐	CATCH BASIN	—○—	

APPROVED BY

THE BOUNDARY SURVEY SHOWN HEREON IS THE OFFICIAL RIGHT-OF-WAY MAP OF A PORTION OF THE "C-23 CANAL".

Richard E. Barnes, Jr.
RICHARD E. BARNES, JR. - P.S.M. #5173
SURVEY SECTION LEADER
SOUTH FLORIDA WATER MANAGEMENT DISTRICT

CERTIFICATION

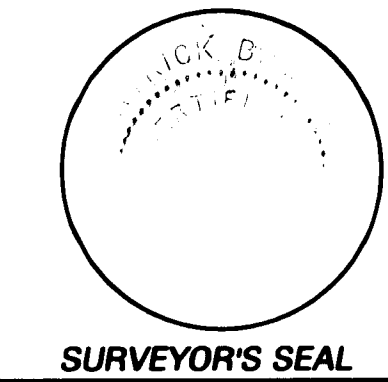
I HEREBY CERTIFY THAT TO THE BEST OF MY KNOWLEDGE AND BELIEF, THE BOUNDARY SURVEY SHOWN HEREON WAS PREPARED IN ACCORDANCE WITH THE "MINIMUM TECHNICAL STANDARDS" FOR SURVEYING AND MAPPING IN THE STATE OF FLORIDA AS SET FORTH BY THE FLORIDA BOARD OF PROFESSIONAL SURVEYORS AND MAPPERS IN CHAPTER 61G17-6, FLORIDA ADMINISTRATIVE CODE, PURSUANT TO SECTION 472.027, FLORIDA STATUTES.

Patrick B. Meeds
PATRICK B. MEEDS
FLORIDA SURVEYOR AND MAPPER
REGISTRATION NO. 4728

MAY 6, 2009
DATE OF LAST FIELD WORK

NOT VALID WITHOUT THE SIGNATURE AND THE ORIGINAL RAISED SEAL OF A FLORIDA LICENSED SURVEYOR AND MAPPER.

CREECH ENGINEERS, INC.
FLORIDA CERTIFICATE OF AUTHORIZATION NUMBER 6705
(LB 6705 = LICENSED BUSINESS NUMBER 6705)



SOUTH FLORIDA WATER MANAGEMENT DISTRICT
LAND ACQUISITION DEPARTMENT - SURVEY SECTION
P.O. BOX 246880
3301 GUN CLUB ROAD
WEST PALM BEACH, FLORIDA 33416-4680

NO.	DATE	BY	DESCRIPTION
1			
2			
3			
4			
5			
6			
7			
8			
9			
10			
11			
12			
13			
14			
15			
16			
17			
18			
19			
20			
21			
22			
23			
24			
25			
26			
27			
28			
29			
30			
31			
32			
33			
34			
35			
36			
37			
38			
39			
40			
41			
42			
43			
44			
45			
46			
47			
48			
49			
50			

CADD FILE NO. 2010-05-27-1000 C23 0001
DRAWING NO. 20102208 (0)
SHEET 91 OF 93