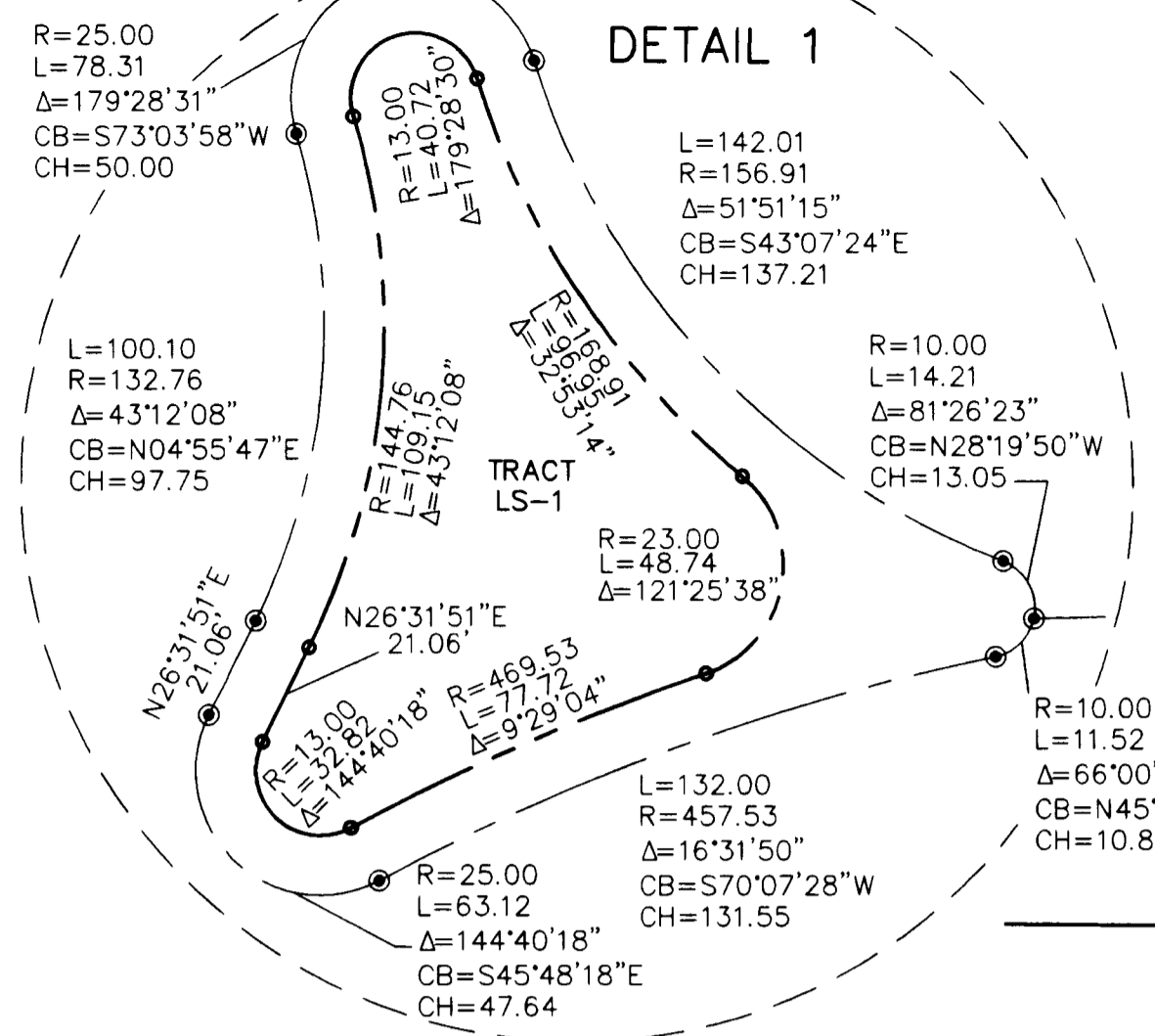
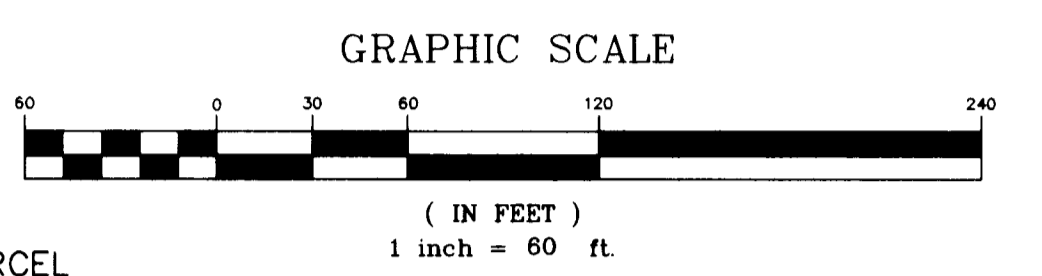
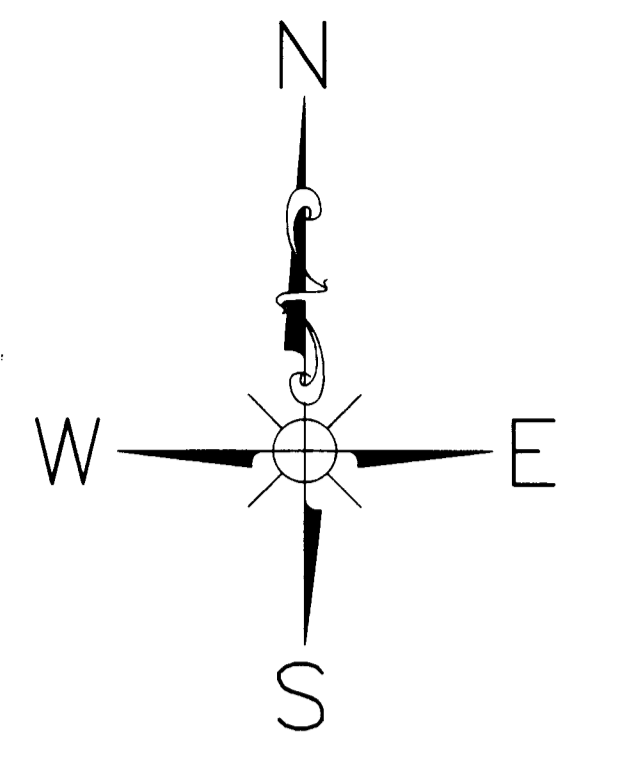


PINECREST LAKES - PHASE 10

LYING IN SECTION 21, TOWNSHIP 37 SOUTH, RANGE 41 EAST,
MARTIN COUNTY, FLORIDA



LEGEND

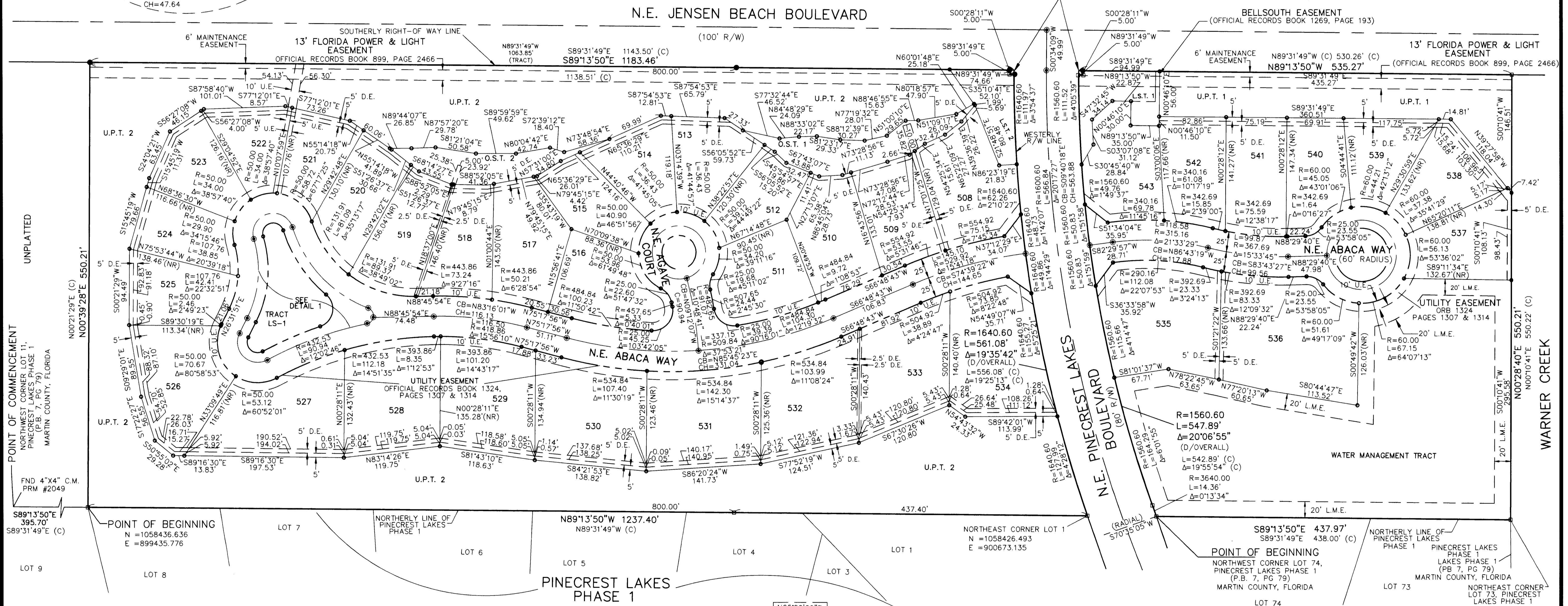
Δ = CURVE CENTRAL ANGLE	U.E. = UTILITY EASEMENT	● = SET NAIL & DISK PRM LB 7056
R = CURVE RADIUS	○ = SET #5 IR&C (LB 7056)	(D) = DEED
L = CURVE LENGTH	O.S.T. = OPEN SPACE TRACT	+/- = MORE OR LESS
FND = FOUND	U.P.T. = UPLAND PRESERVATION TRACT	IP = IRON PIPE
● = SET NAIL & DISK PCP LB #7056	CB = CHORD BEARING	D.E. = DRAINAGE EASEMENT
IR = 5/8" IRON ROD	CH = CHORD	□ = SET 4"x4" CM PRM LB #7056
N&D = NAIL AND DISK	NR = NON RADIAL	F.P.L. = FLORIDA POWER & LIGHT
P.L.S. = PROFESSIONAL LAND SURVEYOR	CL = CENTERLINE	L.S.T. = LANDSCAPE AND SIGN TRACT
LB = LICENSED BUSINESS	ORB = OFFICIAL RECORD BOOK	LME = LAKE MANAGEMENT EASEMENT
P.B. = PLAT BOOK	PG = PAGE	C.M. = CONCRETE MONUMENT
R/W = RIGHT-OF-WAY	C = CALCULATED	IR&C = 5/8" IRON ROD & CAP
P.R.M. = PERMANENT REFERENCE MONUMENT	P.C.P. = PERMANENT CONTROL POINT	(D/OVERALL) = DEED OVERALL

LESS AND EXCEPT PARCEL
(OFFICIAL RECORDS BOOK 1788, PAGE 1881)

BELLSOUTH EASEMENT
(OFFICIAL RECORDS BOOK 1269, PAGE 193)

13' FLORIDA POWER & LIGHT
EASEMENT
(OFFICIAL RECORDS BOOK 899, PAGE 2466)

N.E. JENSEN BEACH BOULEVARD
(100' R/W)



POINT OF COMMENCEMENT
NORTHWEST CORNER LOT 11,
PINECREST LAKES PHASE 1
(P.B. 7, PG 79)
MARTIN COUNTY, FLORIDA

POINT OF BEGINNING
N = 1058436.636
E = 899435.776

POINT OF BEGINNING
NORTHWEST CORNER LOT 74,
PINECREST LAKES PHASE 1
(P.B. 7, PG 79)
MARTIN COUNTY, FLORIDA

NORTHEAST CORNER LOT 73,
PINECREST LAKES PHASE 1
(P.B. 7, PG 79)
MARTIN COUNTY, FLORIDA

5' DRAINAGE EASEMENT DETAIL
AT REAR OF PROPERTY

SURVEYOR'S NOTES:

- This Plat, as recorded in its original form in the Public Records, is the official depiction of the subdivided lands described herein and will in no circumstances be supplanted in authority by any other form of the plat, whether graphic or digital.
- NOTICE: There may be additional restrictions that are not recorded on this plat that may be found in the Public Records of Martin County, Florida.
- The North Right of Way line of N.E. Jensen Beach Boulevard is assumed to bear South 89°13'50" East, and all other bearings shown herein are relative thereto.
- This Plat contains 21.19 acres, more or less.
- This Plat contains 36 lots.
- A 5/8" iron rod and cap stamped LB 7056 has been set or will be set at all lot corners and changes in direction, in compliance with Chapter 177, Part 1 of the Florida Statutes.
- No buildings or other obstructions, including shrubs and trees, shall be placed on Drainage Easements.
- State plane coordinates are based on Geodetic Point PSL 10, and are based on the North American Datum of 1983/1990, Florida East Zone.
- All lot lines are radial unless otherwise noted.
- Lot numbers 1-507 were not used in this plat.

- REVISION 8 OMIT MORTGAGE & FILL IN BLANKS (PER MARTIN CO) 11/18/08
 REVISION 7 MODIFY DEDICATIONS #1 & #10 (ELIMINATING SPACES) 9/12/08
 REVISION 6 MODIFY DEDICATIONS #1 AND #10 TO MATCH TITLE 6/26/08
 REVISION 5 MODIFY PER COMMENTS (DATED 5/2/08) 5/22/08
 REVISION 4 MODIFY OWNERSHIP: COMMENTS (DATED 9/18/07) 12/20/07
 REVISION 3 MARTIN COUNTY COMMENTS (DATED 7/30/07) 8/3/07
 REVISION 2 MARTIN COUNTY COMMENTS (DATED 2/12/07) 4/19/07
 REVISION 1 MODIFY LOTS 522, 523, 524 & O.S.T. 1 & 2 12/7/06

PREPARED BY:
LAVENTURE & ASSOCIATES, INC.
 PROFESSIONAL SURVEYING AND MAPPING
 1840 SE Port St. Lucie Blvd.
 Port St. Lucie, Florida 34952
 (772) 398-6430 Phone (772) 398-6426 Fax
RICHARD C. LAVENTURE
 FLORIDA PROFESSIONAL LAND SURVEYOR # 5209
 FLORIDA LICENSED BUSINESS 7056