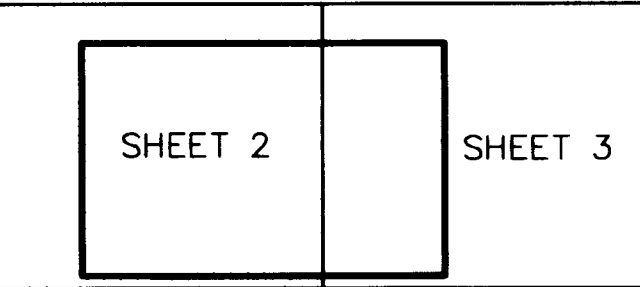


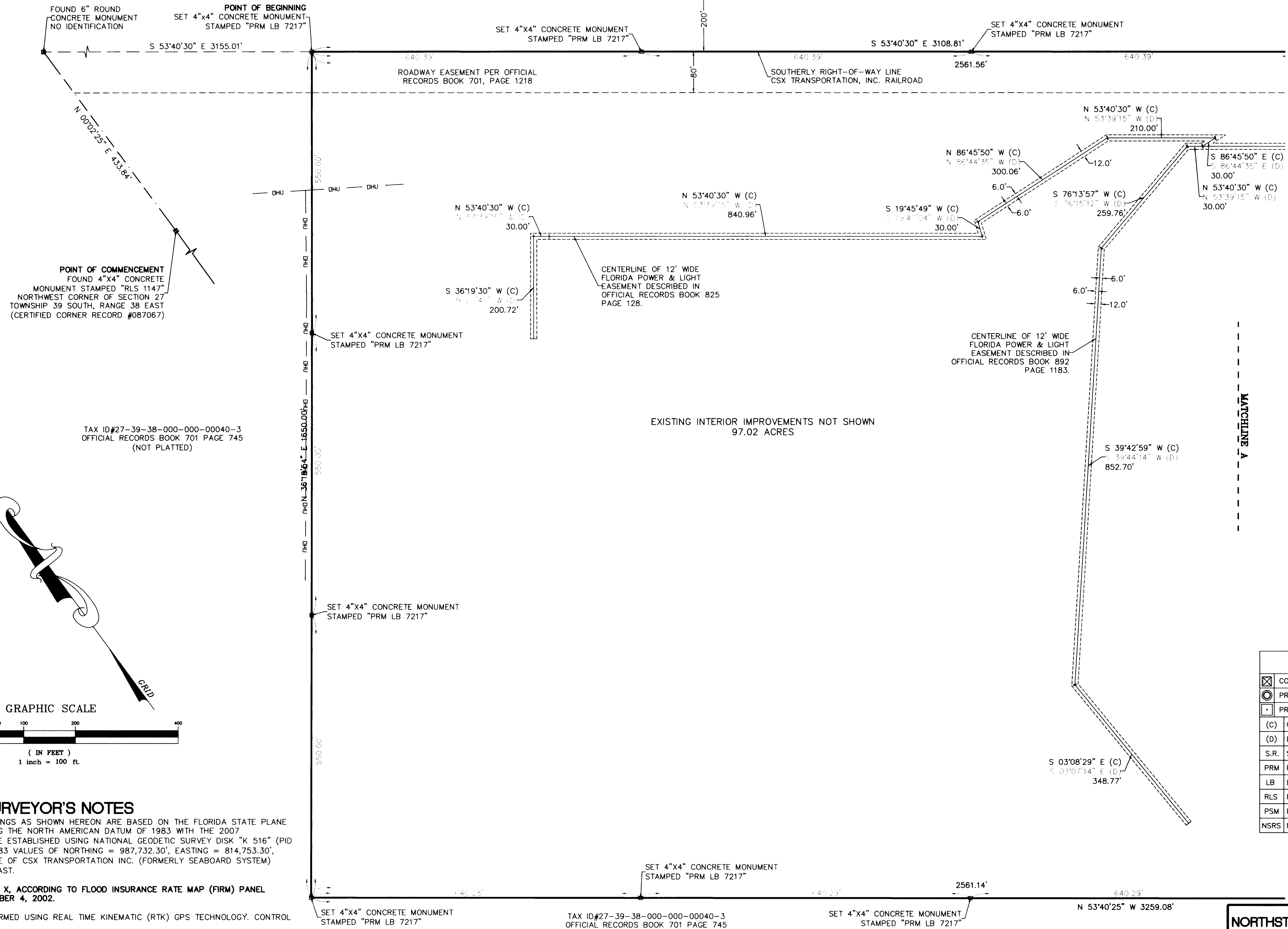
SHEET DETAIL



A PLAT OF
INDIANTOWN EGG PRODUCTION COMPLEX
LYING IN SECTION 27, TOWNSHIP 39 SOUTH, RANGE 38 EAST,
MARTIN COUNTY, FLORIDA

WARFIELD BLVD. (S.R. 710)

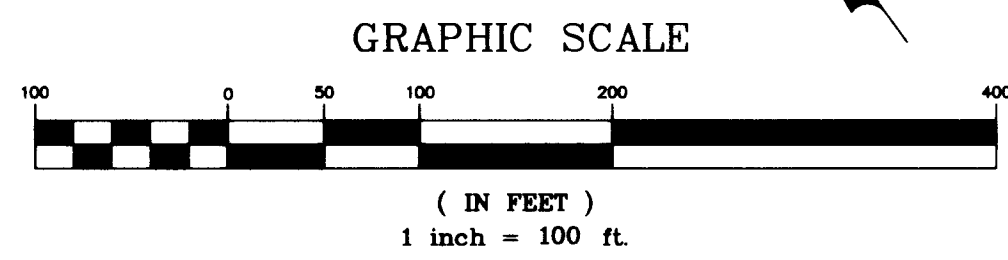
CSX TRANSPORTATION, INC. (FORMERLY SEABOARD SYSTEM) RAILROAD
200' WIDE RIGHT-OF-WAY



POINT OF COMMENCEMENT
FOUND 4"x4" CONCRETE
MONUMENT STAMPED "RLS 1147"
NORTHWEST CORNER OF SECTION 27
TOWNSHIP 39 SOUTH, RANGE 38 EAST
(CERTIFIED CORNER RECORD #087067)

TAX ID#27-39-38-000-000-00040-3
OFFICIAL RECORDS BOOK 701 PAGE 745
(NOT PLATTED)

EXISTING INTERIOR IMPROVEMENTS NOT SHOWN
97.02 ACRES



SURVEYOR'S NOTES

- HORIZONTAL RELATIONSHIPS & BEARINGS AS SHOWN HEREON ARE BASED ON THE FLORIDA STATE PLANE COORDINATE GRID, EAST ZONE, USING THE NORTH AMERICAN DATUM OF 1983 WITH THE 2007 ADJUSTMENT (NSRS 2007) AND WERE ESTABLISHED USING NATIONAL GEODETIC SURVEY DISK "K 516" (PID #AJB425D) HAVING PUBLISHED NAD 83 VALUES OF NORTHING = 987,732.30', EASTING = 814,753.30', AND THE SOUTH RIGHT-OF-WAY LINE OF CSX TRANSPORTATION, INC. (FORMERLY SEABOARD SYSTEM) RAILROAD BEING SOUTH 53°40'30" EAST.
- THIS PROPERTY LIES IN FLOOD ZONE X, ACCORDING TO FLOOD INSURANCE RATE MAP (FIRM) PANEL 12085C0250F, EFFECTIVE DATE OCTOBER 4, 2002.
- SURVEY SHOWN HEREON WAS PERFORMED USING REAL TIME KINEMATIC (RTK) GPS TECHNOLOGY. CONTROL POINT "K 516" (NGS PID #AJB425D).
- SUBJECT PROPERTY HAS ACCESS TO STATE ROAD 710 VIA INGRESS EASEMENTS RECORDED IN OFFICIAL RECORDS BOOK 701, PAGE 1218 AND OFFICIAL RECORDS BOOK 713, PAGE 559, MARTIN COUNTY, FLORIDA, PUBLIC RECORDS.

LEGEND	
	CONCRETE MONUMENT, AS NOTED
	PROPERTY CORNER, AS NOTED
	PROPERTY CORNER, AS NOTED
(C)	CALCULATED
(D)	DEED
S.R.	STATE ROAD
PRM	PERMANENT REFERENCE MARKER
LB	LICENSED BUSINESS
RLS	REGISTERED LAND SURVEYOR
PSM	PROFESSIONAL SURVEYOR AND MAPPER
NSRS	NATIONAL SPATIAL REFERENCE SYSTEM

NORTHSTAR GEOMATICS, INC.
 50 SOUTHEAST KINDRED STREET, SUITE 103
 PO BOX 2371, STUART, FLORIDA 34995
 (772)781-6400 (772)781-6462 FAX
 LICENSED BUSINESS NO. 7217

N.T.S.

 2
 3
 08-083PL

PLATTED BY: JAMES EMMETT SURVEYING, INC. DATE: 8/11/2009 4:23:11 PM, L1