

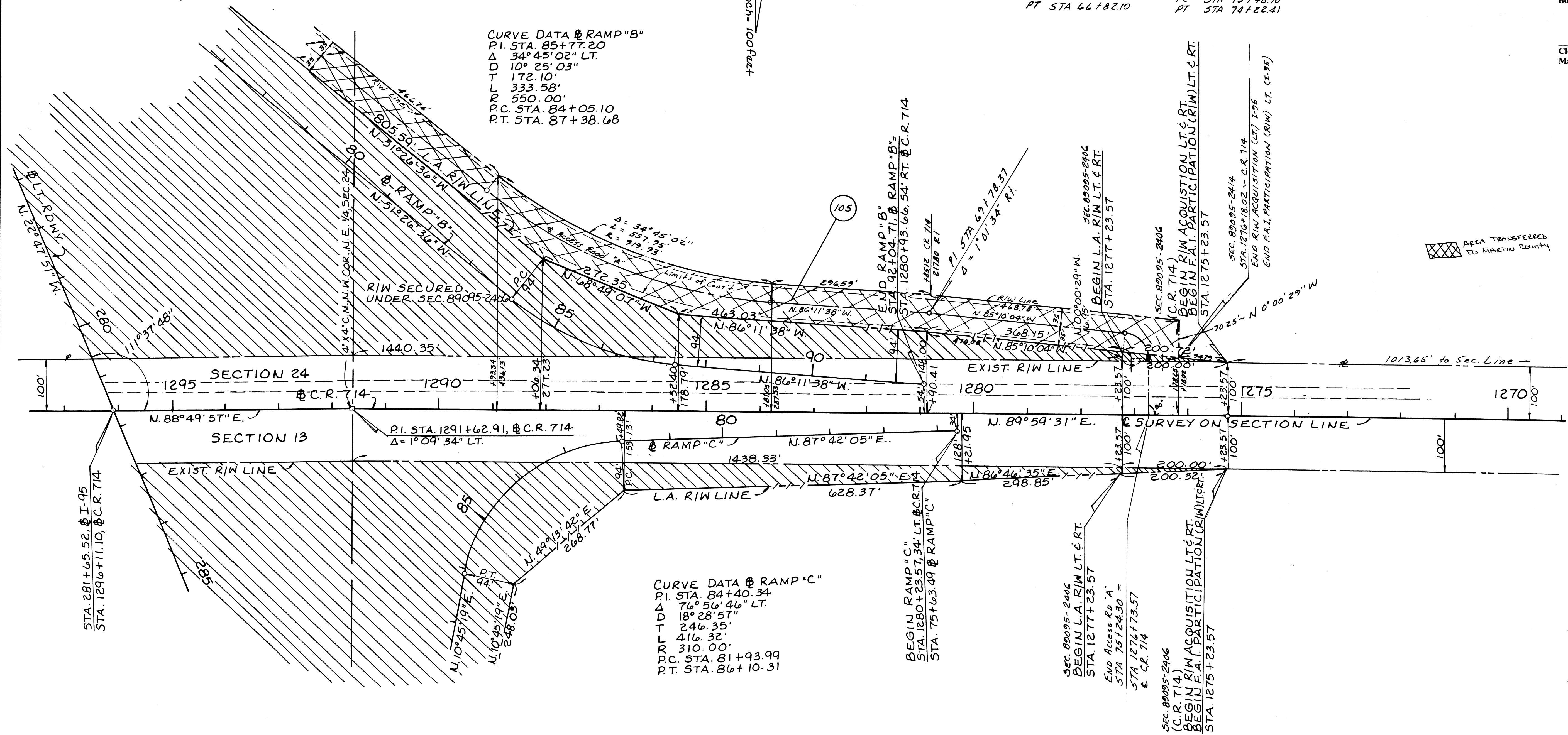
Access Rd "A"
 PI STA 64+01.72
 Δ 34°45'02" LT.
 D 6'
 T 29880'
 L 579.18'
 R 95493'
 PC STA 61+02.92
 PT STA 66+82.10

Access Rd "A"
 PI STA 73+94.04
 Δ 85°09'35" Rt.
 D 114°35'30"
 T 4594'
 L 7431'
 R 50.00'
 PC STA 73+48.10
 PT STA 74+22.41

SCALE: 1 inch = 100 feet

CURVE DATA @ RAMP "B"
 P.I. STA. 85+77.20
 Δ 34°45'02" LT.
 D 10°25'03"
 T 172.10'
 L 333.58'
 R 550.00'
 PC STA. 84+05.10
 PT STA. 87+38.68

CURVE DATA @ RAMP "C"
 P.I. STA. 84+40.34
 Δ 76°56'46" LT.
 D 18°28'57"
 T 246.35'
 L 416.32'
 R 310.00'
 PC STA. 81+93.99
 PT STA. 86+10.31



This right of way map when recorded is an instrument of conveyance, transferring in accordance with the Florida Statutes 337.29 (1977) all right, title, and interest of the Florida Department of Transportation in the road, street, highway, set forth on this map to Martin County.

Recorded in Public Records of Martin County, Florida, this day of _____, A.D. 2009, in Road Plat Book _____, Page _____.

Clerk of the Circuit Court
 Martin County, Florida

FLORIDA DEPARTMENT OF TRANSPORTATION RIGHT OF WAY ENGINEERING SECTION			
RIGHT OF WAY MAP			
STATE ROAD NO. (I-95) 9		MARTIN COUNTY	
DRAWN	BY	DATE	APPROVED BY
TRACED	R.B.S.	7-2-81	E.C. Lord
CHECKED	J.C.B.	7-10-81	W.A.G. 2/20/83
MAPS PREPARED BY		FIELD BOOK NO'S.	
2nd DISTRICT OFFICE			
W.P.I. NO. 446415		SCALE 1 inch = 100 feet	
REVISION	BY	DATE	SECTION 89095-2414 SHEET 15