

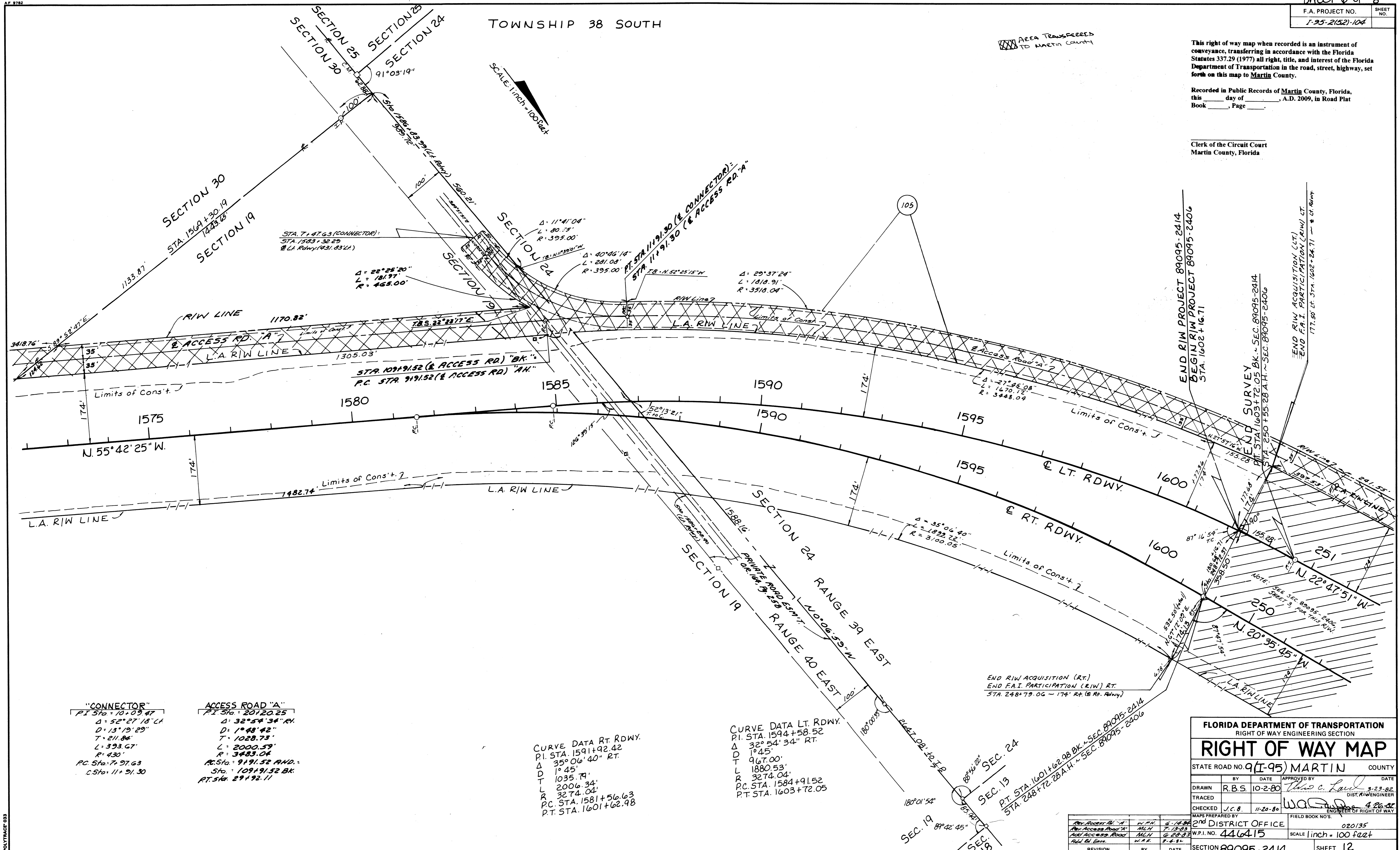
TOWNSHIP 38 SOUTH

AREA TRANSFERRED TO MARTIN COUNTY

This right of way map when recorded is an instrument of conveyance, transferring in accordance with the Florida Statutes 337.29 (1977) all right, title, and interest of the Florida Department of Transportation in the road, street, highway, set forth on this map to Martin County.

Recorded in Public Records of Martin County, Florida, this _____ day of _____, A.D. 2009, in Road Plat Book _____, Page _____.

Clerk of the Circuit Court
 Martin County, Florida



"CONNECTOR"
 P.I. STA. 10+09.47
 Δ = 52°27'18" L
 D = 13°19'29"
 T = 211.84'
 L = 393.67'
 R = 430'
 P.C. STA. 7+97.63
 C STA. 11+91.30

ACCESS ROAD "A"
 P.I. STA. 20120.25
 Δ = 32°54'34" R
 D = 1°48'42"
 T = 1028.73'
 L = 2000.59'
 R = 3483.04'
 P.C. STA. 9191.52 AND 109+91.52 BK.
 P.T. STA. 29+92.11

CURVE DATA RT. RDWY.
 P.I. STA. 1591+92.42
 Δ = 35°06'40" RT.
 D = 1°45'
 T = 1035.79'
 L = 2006.34'
 R = 3274.04'
 P.C. STA. 1581+56.63
 P.T. STA. 1601+62.98

CURVE DATA LT. RDWY.
 P.I. STA. 1594+58.52
 Δ = 32°54'34" RT.
 D = 1°45'
 T = 967.00'
 L = 1880.53'
 R = 3274.04'
 P.C. STA. 1584+91.52
 P.T. STA. 1603+72.05

FLORIDA DEPARTMENT OF TRANSPORTATION RIGHT OF WAY ENGINEERING SECTION			
RIGHT OF WAY MAP			
STATE ROAD NO. 9(I-95) MARTIN COUNTY			
BY	DATE	APPROVED BY	DATE
R.B.S.	10-2-80	<i>Thos. C. Paul</i>	9-23-82
TRACED			DIST. ENGINEER
CHECKED	J.C.B.	11-20-80	<i>W.A. Paul</i>
MAPS PREPARED BY 2nd DISTRICT OFFICE			FIELD BOOK NOS.
W.P.I. NO. 446415			020135
SECTION 89095-2414			SCALE 1 inch = 100 feet
			SHEET 12

REVISION	BY	DATE
REV. ACCESS RD. "A"	W.P.H.	6-14-80
REV. ACCESS ROAD "A"	MLH	7-13-83
ADD. ACCESS ROAD	MLH	6-28-83
REV. BL. ENDS.	W.A.H.	8-4-81

PL 033