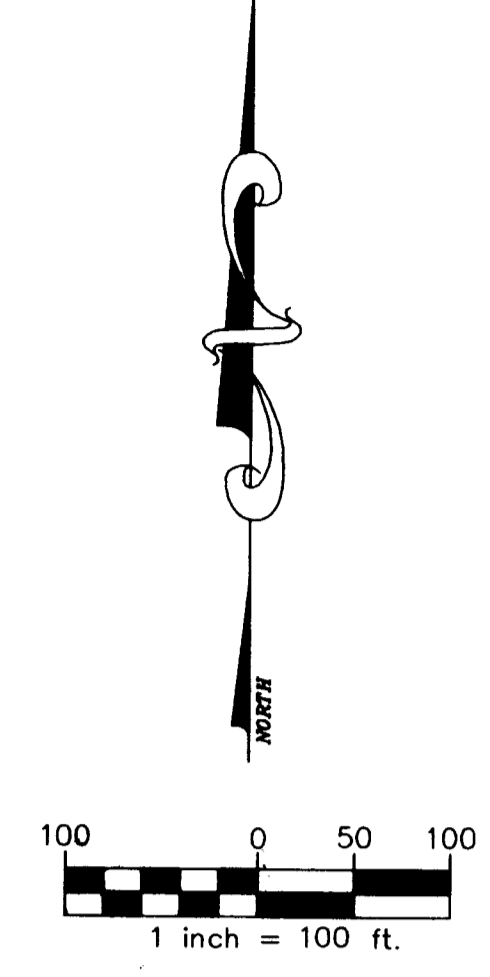
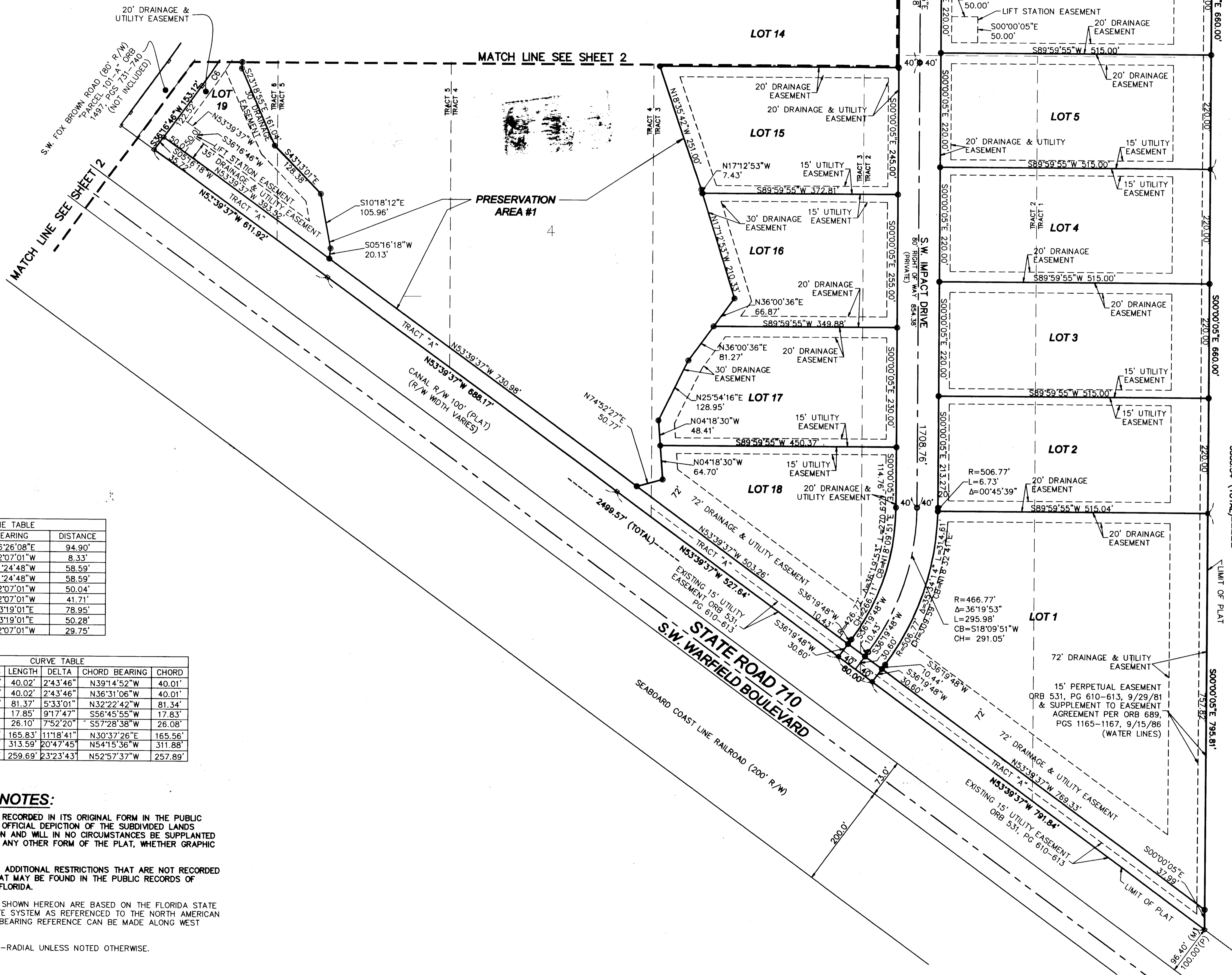


# VENTURE PARK P.U.D.

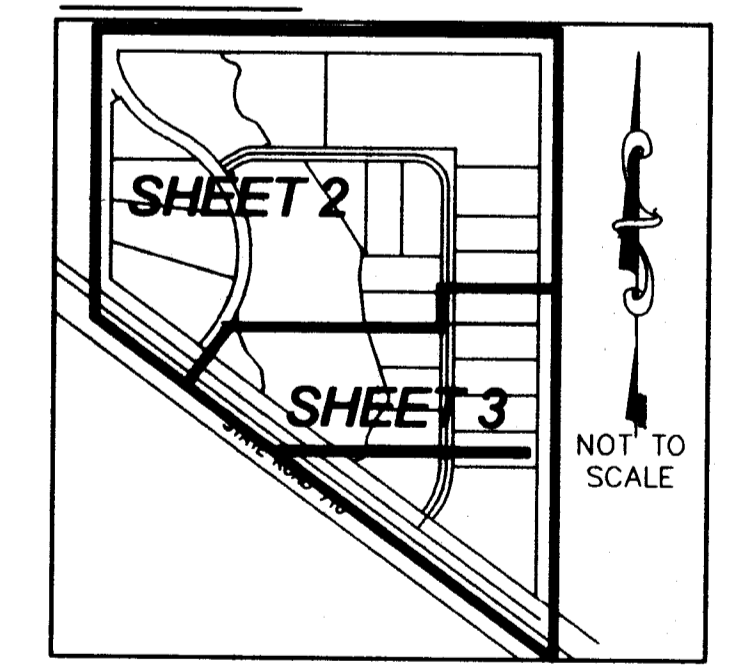
BEING A REPLAT OF PORTIONS OF TRACTS 1 THROUGH 12, AND TRACTS 55 AND 56, BLOCK B, INDIANTOWN FARMS, ACCORDING TO THE PLAT THEREOF, RECORDED IN PLAT BOOK 1, PAGE 80, PUBLIC RECORDS OF MARTIN COUNTY, FLORIDA



**LEGEND**

- PCP PERMANENT CONTROL POINT
- PRM PERMANENT REFERENCE MONUMENT
- SET 1-1/2" x 1/4" METAL MAG NAIL & 1-1/4" BRASS DISK STAMPED "FENEX PCP 5102" (PCP)
- SET 4"x4"x24" CONCRETE MONUMENT & 1-1/4" BRASS DISK STAMPED "FENEX PRM 5102" PERMANENT REFERENCE MONUMENT (PRM)
- SET 5/8"x18" IRON ROD & 1-1/4" PLASTIC CAP STAMPED "FENEX 5102"
- NO. NUMBER
- R/W RIGHT OF WAY
- ⊕ CENTERLINE
- L1 LINE NUMBER
- C1 CURVE NUMBER
- R RADIUS
- L LENGTH
- Δ DELTA
- CB CHORD BEARING
- CH CHORD DISTANCE
- P.U.D. PLANNED UNIT DEVELOPMENT
- ORB OFFICIAL RECORDS BOOK (MARTIN COUNTY)
- PG PAGE(S)
- Ⓢ COMMON AREA
- PSM PROFESSIONAL SURVEYOR & MAPPER
- (M) MEASURED
- (P) PLAT

**KEY MAP**



LINE	BEARING	DISTANCE
L1	S06°26'08"E	94.90'
L2	S52°07'01"W	8.33'
L3	S61°24'48"W	58.59'
L4	S61°24'48"W	58.59'
L5	S52°07'01"W	50.04'
L6	S52°07'01"W	41.71'
L7	S43°19'01"E	78.95'
L8	S43°19'01"E	50.28'
L9	S52°07'01"W	29.75'

CURVE	RADIUS	LENGTH	DELTA	CHORD BEARING	CHORD
C1	840.00'	40.02'	2°43'46"	N39°14'52"W	40.01'
C2	840.00'	40.02'	2°43'46"	N36°31'06"W	40.01'
C3	840.00'	81.37'	5°33'01"	N32°22'42"W	81.34'
C4	110.00'	17.85'	9°17'47"	S56°45'55"W	17.83'
C5	190.00'	26.10'	7°52'20"	S57°28'38"W	26.08'
C6	840.00'	165.83'	11°18'41"	N30°37'26"E	165.56'
C7	864.00'	313.59'	20°47'45"	N54°15'36"E	311.88'
C8	636.00'	259.69'	23°23'43"	N52°57'37"W	257.89'

**GENERAL NOTES:**

1. THIS PLAT, AS RECORDED IN ITS ORIGINAL FORM IN THE PUBLIC RECORDS, IS THE OFFICIAL DEPICTION OF THE SUBDIVIDED LANDS DESCRIBED HEREON AND WILL IN NO CIRCUMSTANCES BE SUPPLANTED IN AUTHORITY BY ANY OTHER FORM OF THE PLAT, WHETHER GRAPHIC OR DIGITAL.
2. THERE MAY BE ADDITIONAL RESTRICTIONS THAT ARE NOT RECORDED ON THIS PLAT THAT MAY BE FOUND IN THE PUBLIC RECORDS OF MARTIN COUNTY, FLORIDA.
3. THE BEARINGS SHOWN HEREON ARE BASED ON THE FLORIDA STATE PLANE COORDINATE SYSTEM AS REFERENCED TO THE NORTH AMERICAN DATUM OF 1983, BEARING REFERENCE CAN BE MADE ALONG WEST PROPERTY LINE.
4. ALL LINES NON-RADIAL UNLESS NOTED OTHERWISE.

PREPARED IN THE OFFICE OF:  
**CHRISTIAN FENEX & ASSOCIATES, LLC.**  
 PROFESSIONAL SURVEYING & MAPPING  
 ENVIRONMENTAL CONSULTING  
 1657 S. DIXIE HIGHWAY  
 STUART, FLORIDA 34994  
 PHONE: (772)283-2977 FAX: (772)283-2979  
**SHEET THREE OF THREE**