

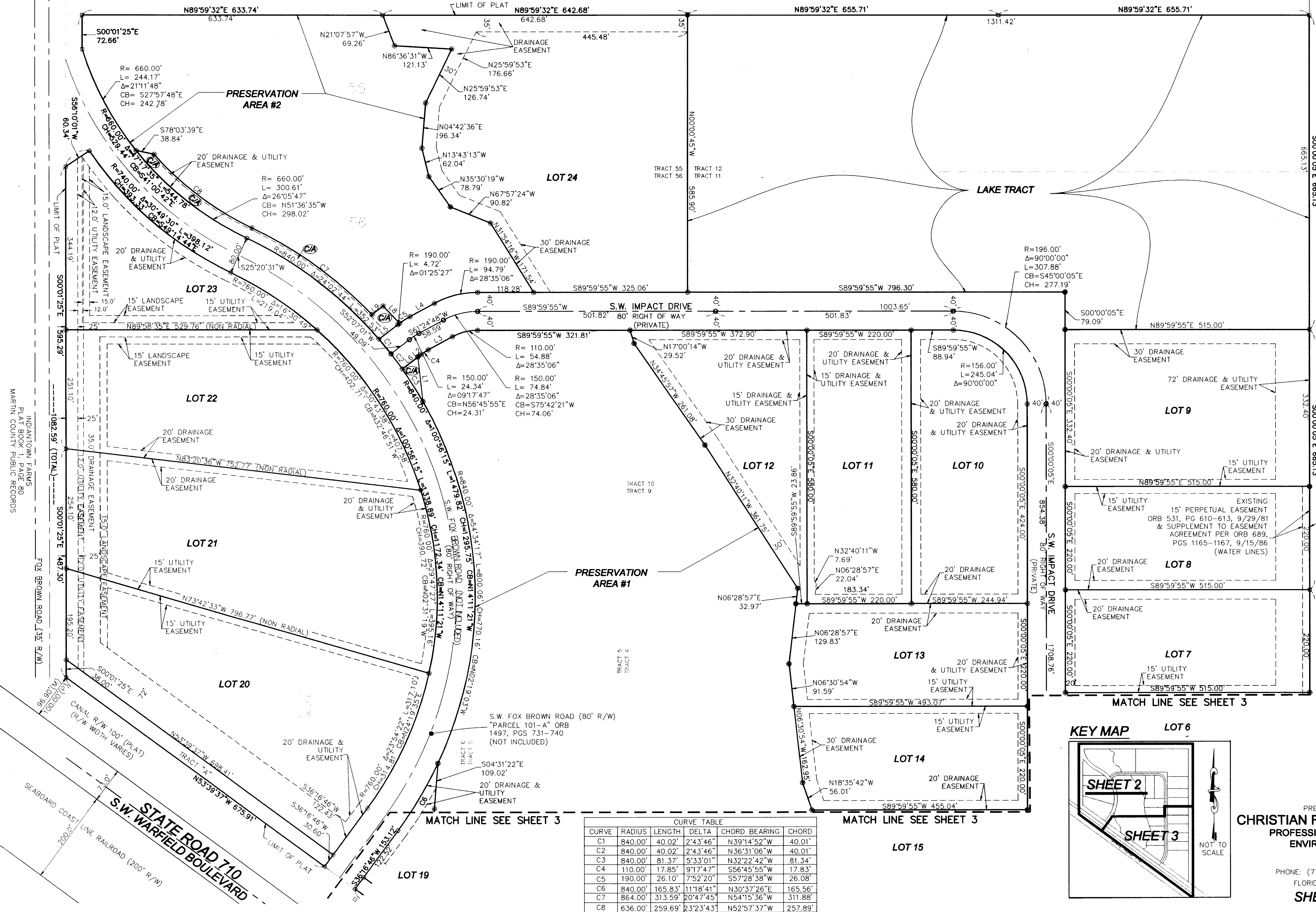
# VENTURE PARK P.U.D.

BEING A REPLAT OF PORTIONS OF TRACTS 1 THROUGH 12, AND TRACTS 55 AND 56, BLOCK B, INDIANTOWN FARMS, ACCORDING TO THE PLAT THEREOF, RECORDED IN PLAT BOOK 1, PAGE 80, PUBLIC RECORDS OF MARTIN COUNTY, FLORIDA

BLOCK "B"  
INDIANTOWN FARMS  
PLAT BOOK 1, PAGE 80  
MARTIN COUNTY PUBLIC RECORDS

BLOCK "B"  
INDIANTOWN FARMS  
PLAT BOOK 1, PAGE 80  
MARTIN COUNTY PUBLIC RECORDS

-----2587.83' (TOTAL)-----



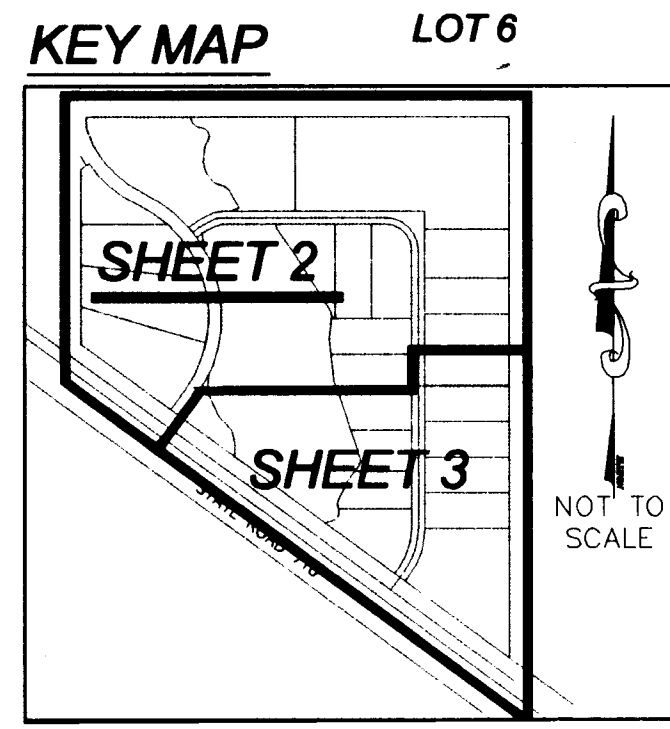
INDIANTOWN FARMS  
PLAT BOOK 1, PAGE 80  
MARTIN COUNTY PUBLIC RECORDS

- LEGEND**
- PCP PERMANENT CONTROL POINT
  - PRM PERMANENT REFERENCE MONUMENT
  - SET 1-1/2" x 1/4" METAL MAG NAIL & 1-1/4" BRASS DISK STAMPED "FENEX PCP 5102" (PCP)
  - SET 4"x4"x24" CONCRETE MONUMENT & 1-1/4" BRASS DISK STAMPED "FENEX PRM 5102" PERMANENT REFERENCE MONUMENT (PRM)
  - SET 5/8"x18" IRON ROD & 1-1/4" PLASTIC CAP STAMPED "FENEX 5102"
  - NO. NUMBER
  - R/W RIGHT OF WAY
  - ⊕ CENTERLINE
  - L1 LINE NUMBER
  - C1 CURVE NUMBER
  - R RADIUS
  - L LENGTH
  - Δ DELTA
  - CB CHORD BEARING
  - CH CHORD DISTANCE
  - P.U.D. PLANNED UNIT DEVELOPMENT
  - ORB OFFICIAL RECORDS BOOK (MARTIN COUNTY)
  - PG PAGE(S)
  - ⊙ COMMON AREA
  - PSM PROFESSIONAL SURVEYOR & MAPPER
  - (M) MEASURED
  - (P) PLAT

- GENERAL NOTES:**
1. THIS PLAT, AS RECORDED IN ITS ORIGINAL FORM IN THE PUBLIC RECORDS, IS THE OFFICIAL DEPICTION OF THE SUBDIVIDED LANDS DESCRIBED HEREON AND WILL IN NO CIRCUMSTANCES BE SUPPLANTED IN AUTHORITY BY ANY OTHER FORM OF THE PLAT, WHETHER GRAPHIC OR DIGITAL.
  2. THERE MAY BE ADDITIONAL RESTRICTIONS THAT ARE NOT RECORDED ON THIS PLAT THAT MAY BE FOUND IN THE PUBLIC RECORDS OF MARTIN COUNTY, FLORIDA.
  3. THE BEARINGS SHOWN HEREON ARE BASED ON THE FLORIDA STATE PLANE COORDINATE SYSTEM AS REFERENCED TO THE NORTH AMERICAN DATUM OF 1983. BEARING REFERENCE CAN BE MADE ALONG WEST PROPERTY LINE.
  4. ALL LINES NON-RADIAL UNLESS NOTED OTHERWISE.

LINE	BEARING	DISTANCE
L1	S06°26'08"E	94.90'
L2	S52°07'01"W	8.33'
L3	S61°24'48"W	58.59'
L4	S61°24'48"W	58.59'
L5	S52°07'01"W	50.04'
L6	S52°07'01"W	41.71'
L7	S43°19'01"E	78.95'
L8	S43°19'01"E	50.28'
L9	S52°07'01"W	29.75'

CURVE	RADIUS	LENGTH	DELTA	CHORD BEARING	CHORD
C1	840.00'	40.02'	2°43'46"	N39°14'52"W	40.01'
C2	840.00'	40.02'	2°43'46"	N36°31'06"W	40.01'
C3	840.00'	81.37'	5°33'01"	N32°22'42"W	81.34'
C4	110.00'	17.85'	9°17'47"	S56°45'55"W	17.83'
C5	190.00'	26.10'	7°52'20"	S57°28'38"W	26.08'
C6	840.00'	165.83'	11°18'41"	N30°37'26"E	165.56'
C7	864.00'	313.59'	20°47'45"	N54°15'36"W	311.88'
C8	636.00'	259.69'	23°23'43"	N52°57'37"W	257.89'



PREPARED IN THE OFFICE OF:  
**CHRISTIAN FENEX & ASSOCIATES, LLC.**  
PROFESSIONAL SURVEYING & MAPPING  
ENVIRONMENTAL CONSULTING  
1657 S. DIXIE HIGHWAY  
STUART, FLORIDA 34994  
PHONE: (772)283-2977 FAX: (772)283-2979  
FLORIDA LICENSED BUSINESS # 6858  
**SHEET TWO OF THREE**