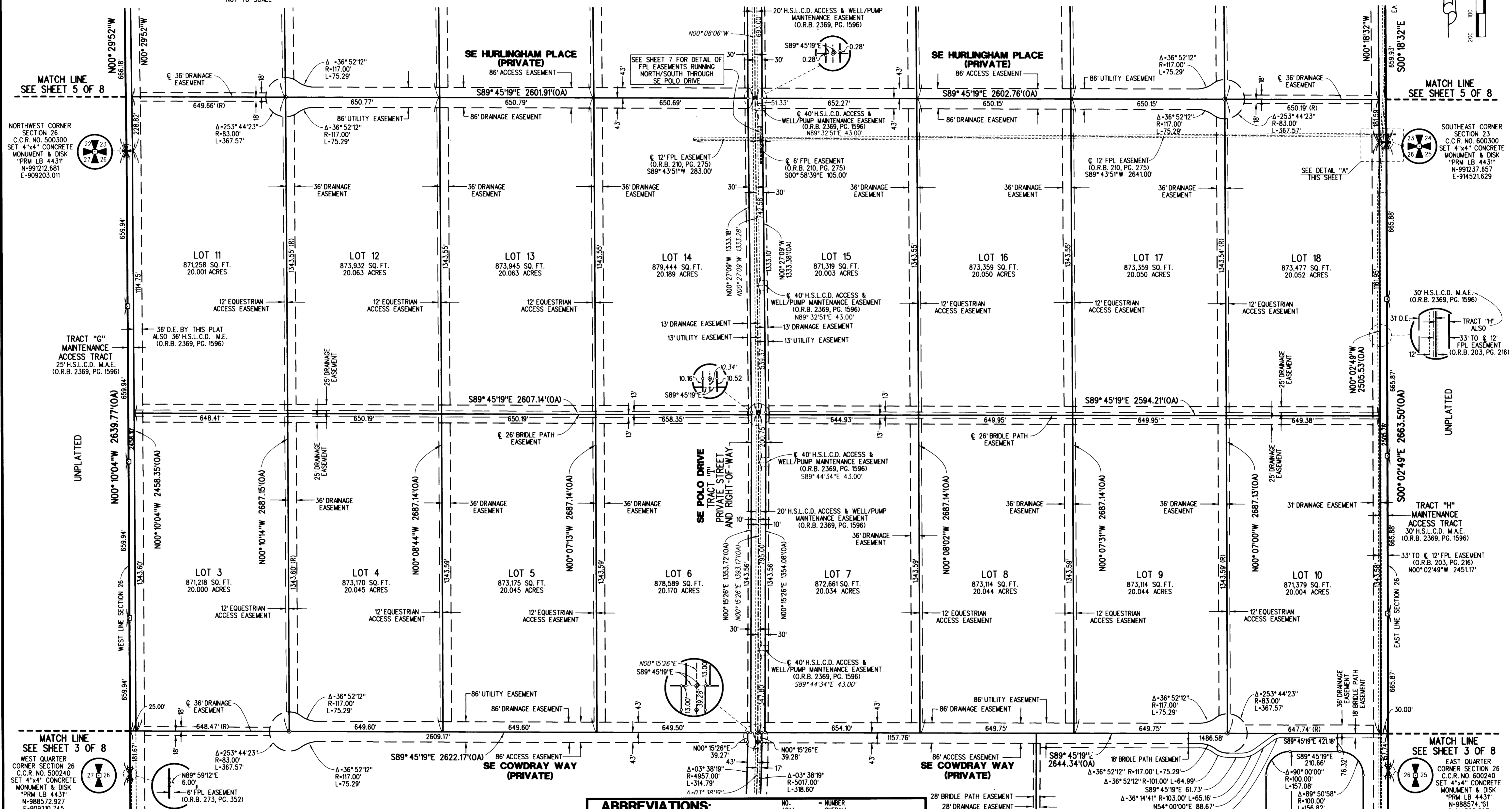
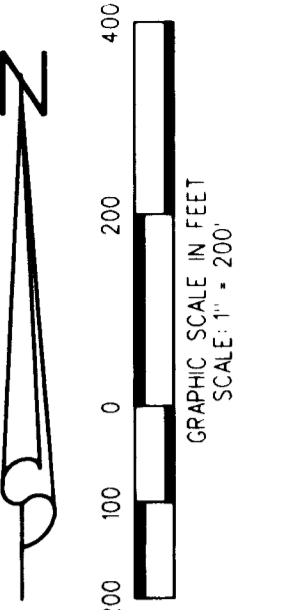
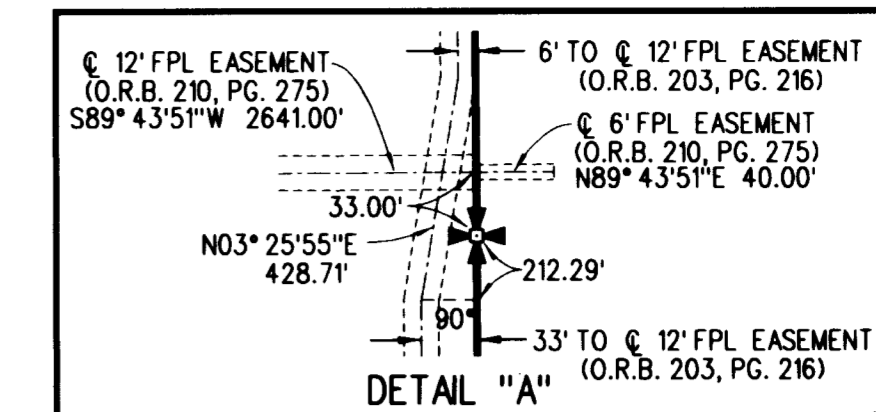
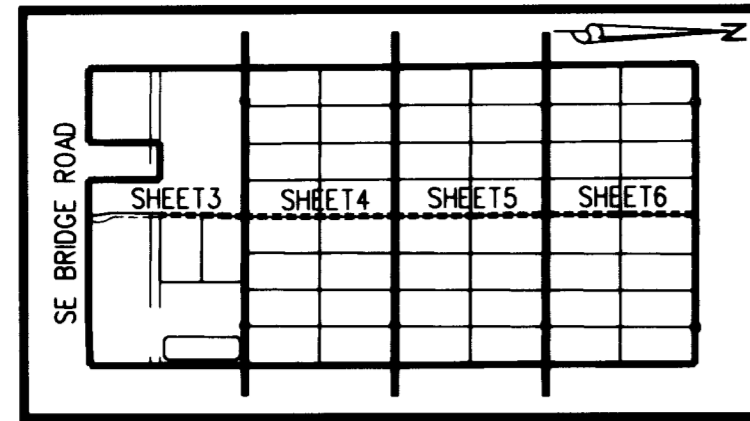


# HOBE SOUND POLO CLUB

SITUATE IN SECTIONS 14, 23 AND 26, TOWNSHIP 39 SOUTH,  
RANGE 41 EAST, MARTIN COUNTY, FLORIDA



**SURVEYOR'S NOTES:**

- BEARINGS SHOWN HEREON ARE REFERENCED TO THE SOUTH LINE OF SECTION 26, TOWNSHIP 39 SOUTH, RANGE 41 EAST AND SAID LINE BEARS NORTH 89°45'23" WEST.
- TO AVOID CONFUSION, SECTION LINES WITHIN THE PLAT BOUNDARY ARE NOT SHOWN ON MAP SHEETS 3 THROUGH 7. SEE MAP SHEET 8 FOR A DETAIL OF SAID SECTION LINES.

3. LINES, WHICH INTERSECT CURVES, ARE NON-RADIAL UNLESS OTHERWISE NOTED.
4. a) THIS PLAT, AS RECORDED IN ITS ORIGINAL FORM IN THE PUBLIC RECORDS, IS THE OFFICIAL DEPICTION OF THE SUBDIVIDED LANDS DESCRIBED HEREON AND WILL IN NO CIRCUMSTANCES BE SUPPLANTED IN AUTHORITY BY ANY OTHER FORM OF THE PLAT, WHETHER GRAPHIC OR DIGITAL.  
b) THERE MAY BE ADDITIONAL RESTRICTIONS THAT ARE NOT RECORDED ON THIS PLAT THAT MAY BE FOUND IN THE PUBLIC RECORDS OF THIS COUNTY.
5. THIS INSTRUMENT WAS PREPARED BY RICHARD JEROME WILKIE, P.S.M., IN AND FOR THE OFFICES OF LIDBERG LAND SURVEYING, INC., 675 WEST INDIANTOWN ROAD, SUITE 200, JUPITER, FLORIDA 33458. TELEPHONE: (561) 746-8454.

**ABBREVIATIONS:**

CL	= CENTER LINE	NO.	= NUMBER
CB	= CHORD BEARING	(OA)	= OVERALL
CL	= CHORD LENGTH	O.R.B.	= OFFICIAL RECORDS BOOK
C.C.R.	= CERTIFIED CORNER RECORD	PG.	= PAGE
D.E.	= DRAINAGE EASEMENT	P.O.B.	= POINT OF BEGINNING
D.D.T.	= DEPARTMENT OF TRANSPORTATION	P.D.C.	= POINT OF COMMENCEMENT
FND.	= FOUND	P.R.M.	= PERMANENT REFERENCE MONUMENT
F.P.L.	= FLORIDA POWER & LIGHT	(R)	= RADIAL
H.S.L.C.D.	= HOBE-ST. LUCIE CONSERVANCY DISTRICT	R	= RADIAL
L.B.E.	= LANDSCAPE BUFFER EASEMENT	R.O.W.	= RIGHT OF WAY
L	= ARC LENGTH	SE	= SOUTHEAST
M.A.E.	= MAINTENANCE ACCESS EASEMENT	SQ.FT.	= SQUARE FEET
M.E.	= MAINTENANCE EASEMENT	S.R.	= STATE ROAD
		U.E.	= UTILITY EASEMENT
		Δ	= DELTA ANGLE

**LIDBERG LAND SURVEYING, INC.**  
 675 West Indiantown Road, Suite 200, Jupiter, Florida 33458 TEL. 561-746-8454

CAD.	K/NUST \ BECKER \ 07-0218-306 \ 07-0218-306.DGN		
REF.			
F.L.D.	A.M. & B.D.	FB.	561 PG. 21
OFF.	R.J.W.		548 1540-57
CKD.	D.C.L.		546 40.43847
		SHEET	4 OF 8
		JOB	07-0218-306
		DATE	11/21/08
		DWG.	D07-0218